

Southeast ALASKA

MODERN - RESILIENT - AGILE

*Building a safer, stronger, and more sustainable transportation future—
together*



LAND, AIR & SEA

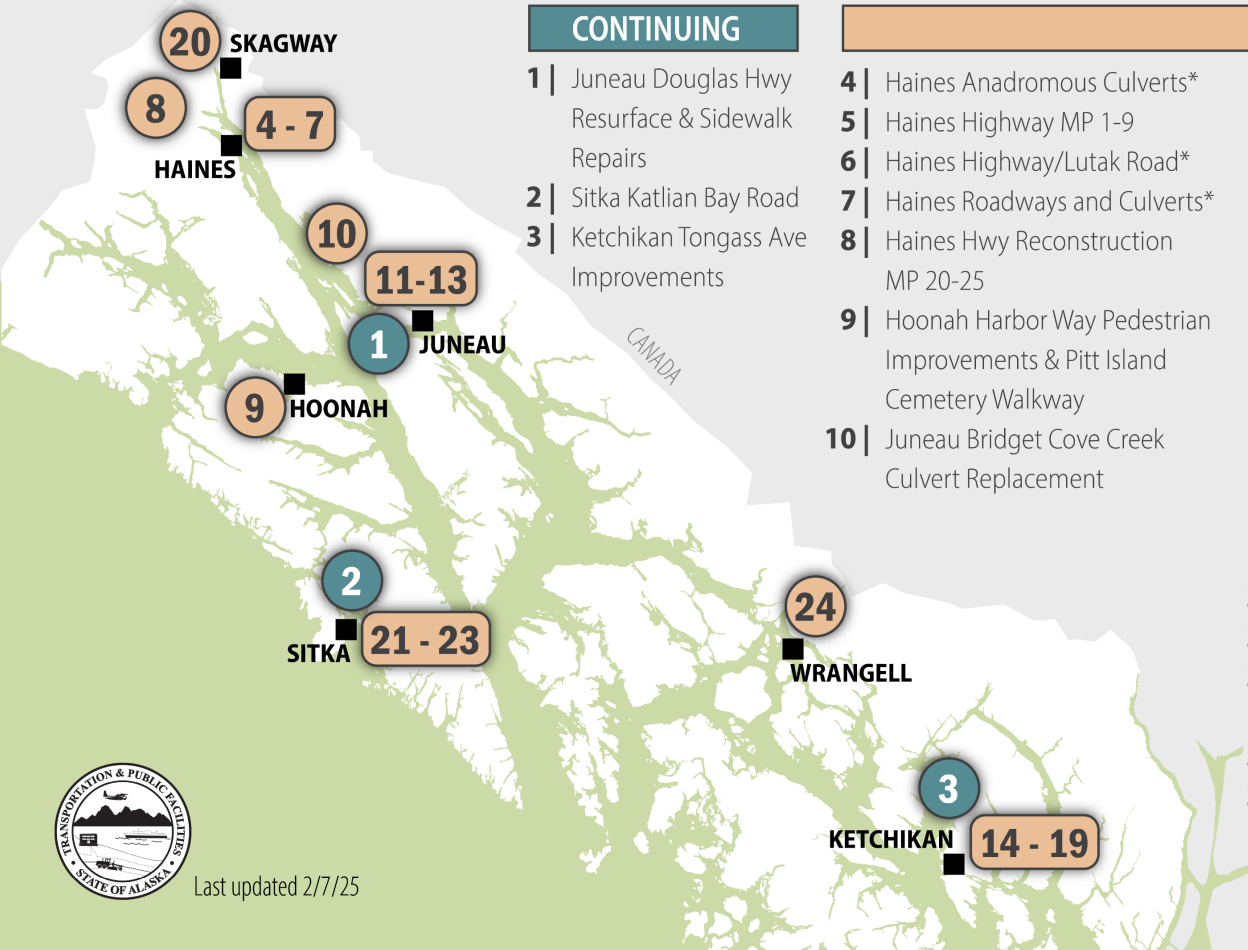
*it takes a
team*

**SE Conference
Mid-Session
Summit**

**2025 Regional
Update**

Christopher Goins, PE

SOUTHEAST | 2025 CONSTRUCTION



Last updated 2/7/25

CONTINUING

- 1 | Juneau Douglas Hwy Resurface & Sidewalk Repairs
- 2 | Sitka Katlian Bay Road
- 3 | Ketchikan Tongass Ave Improvements

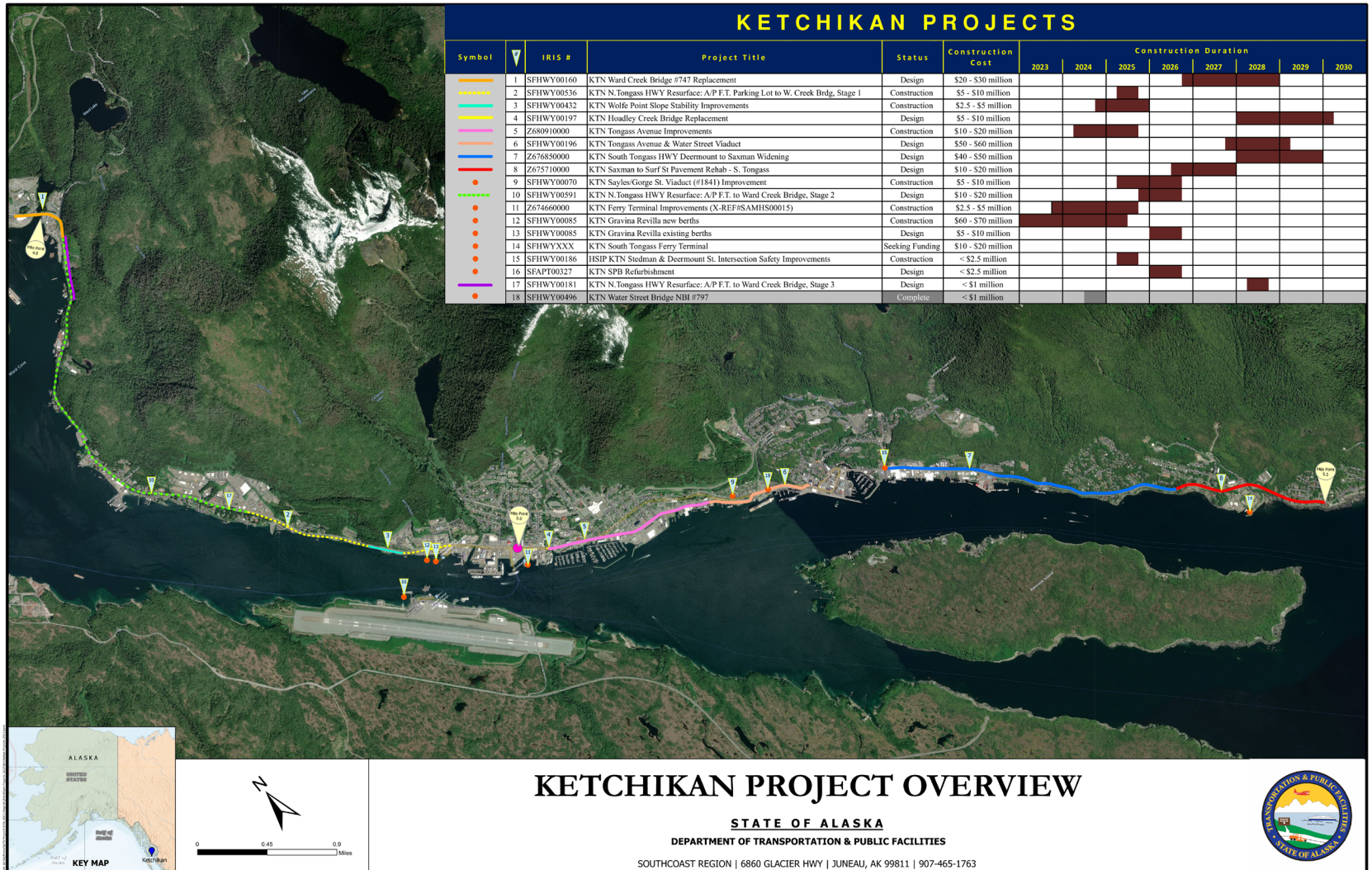
NEW IN 2025

- 4 | Haines Anadromous Culverts*
- 5 | Haines Highway MP 1-9
- 6 | Haines Highway/Lutak Road*
- 7 | Haines Roadways and Culverts*
- 8 | Haines Hwy Reconstruction MP 20-25
- 9 | Hoonah Harbor Way Pedestrian Improvements & Pitt Island Cemetery Walkway
- 10 | Juneau Bridget Cove Creek Culvert Replacement
- 11 | Juneau Glacier Highway Chip Seal - Industrial to Roundabout*
- 12 | Juneau Waydelich Creek: Upper & Lower Wall Repairs
- 13 | Juneau Roadways and Culverts*
- 14 | Ketchikan Ferry Terminal Improvements - Phase II
- 15 | Ketchikan HSIP Stedman & Deermount Street Intersection Safety Improvements
- 16 | Ketchikan N. Tongass Highway Resurface: Airport Ferry Terminal to Ward Creek Bridge Stage I
- 17 | Ketchikan N. Tongass Highway Resurface: Airport Ferry Terminal to Ward Creek Bridge Stage II*
- 18 | Ketchikan Sayles/Gorge St Viaduct Improvement
- 19 | Ketchikan Wolfe Pt Slope Stability Improvements CMGC
- 20 | Skagway State Street Pavement Rehabilitation
- 21 | Sitka Airport Terminal Building Improvements - Stage 1*
- 22 | Sitka Halibut Point Rd & Peterson Intersection Safety Improvements
- 23 | Sitka Seawalk Phase II
- 24 | Wrangell Airport Gates and Security Upgrades

*Indicates projects that will be advertised later in the season and may only see preliminary construction in 2025

2025 SOUTHEAST CONSTRUCTION PROGRAM

KETCHIKAN CONSTRUCTION PROGRAM 2023-2030

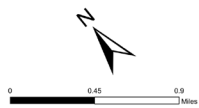


KETCHIKAN PROJECT OVERVIEW

STATE OF ALASKA

DEPARTMENT OF TRANSPORTATION & PUBLIC FACILITIES

SOUTHCOAST REGION | 6860 GLACIER HWY | JUNEAU, AK 99811 | 907-465-1763



SOUTHCOAST REGION DESIGN: AUKE BAY EAST BERTH TERMINAL IMPROVEMENTS

- **Construction:** 2026
- **Estimated project cost:** \$15-20M
- **Scope:**
 - Replacement of mooring dolphins
 - Replacement/repairs to transfer bridge and support float
 - Mechanical upgrades
- **Potential Challenges:**
 - Requires temporary vessel mooring relocation triggering dredging need at adjacent berth to prevent damage to vessel at low tide.



SOUTHCOAST REGION DESIGN: WAYDELICH CREEK WALL REPAIR

- **Construction:** 2025
- **Estimated project cost:** ~ \$2M
- **Scope:**
 - Repair failing components of an MSE wall with tiebacks to reopen shoulder
- **Potential Challenges:**
 - MSE wall with tie-backs.
 - Tight right of way and working area.
 - Expect flagging operations during construction.





SOUTHCOAST REGION: WOLFE POINT ROCK SLOPE STABILIZATION

- **Construction:** 2025
- **Estimated cost:** ~ \$5.5 M
- **Scope:**
 - Slope modification to eliminate rock fall hazards protecting long term pavement life and the public
- **Challenges:**
 - Blasting Operations
 - Temporary Road Closures
 - Single road access through this portion of Ketchikan

SOUTHCOAST REGION: HAINES HIGHWAY STAGE III

- **Construction:** 2025 – 2026
- **Construction cost:** ~ \$55 M
- **Scope:**
 - Reconstruct and Realign Haines Highway from MP 20 to MP 25.
- **Potential Challenges:**
 - Historically significant area
 - Known contaminated sites.
 - Tight right way near the bridge site.
 - Within a known debris flow area.
- **Achievements:**
 - Completes modernization of the Haines Highway to the border.
 - Will reduce maintenance costs in the corridor because of debris flow mitigations.



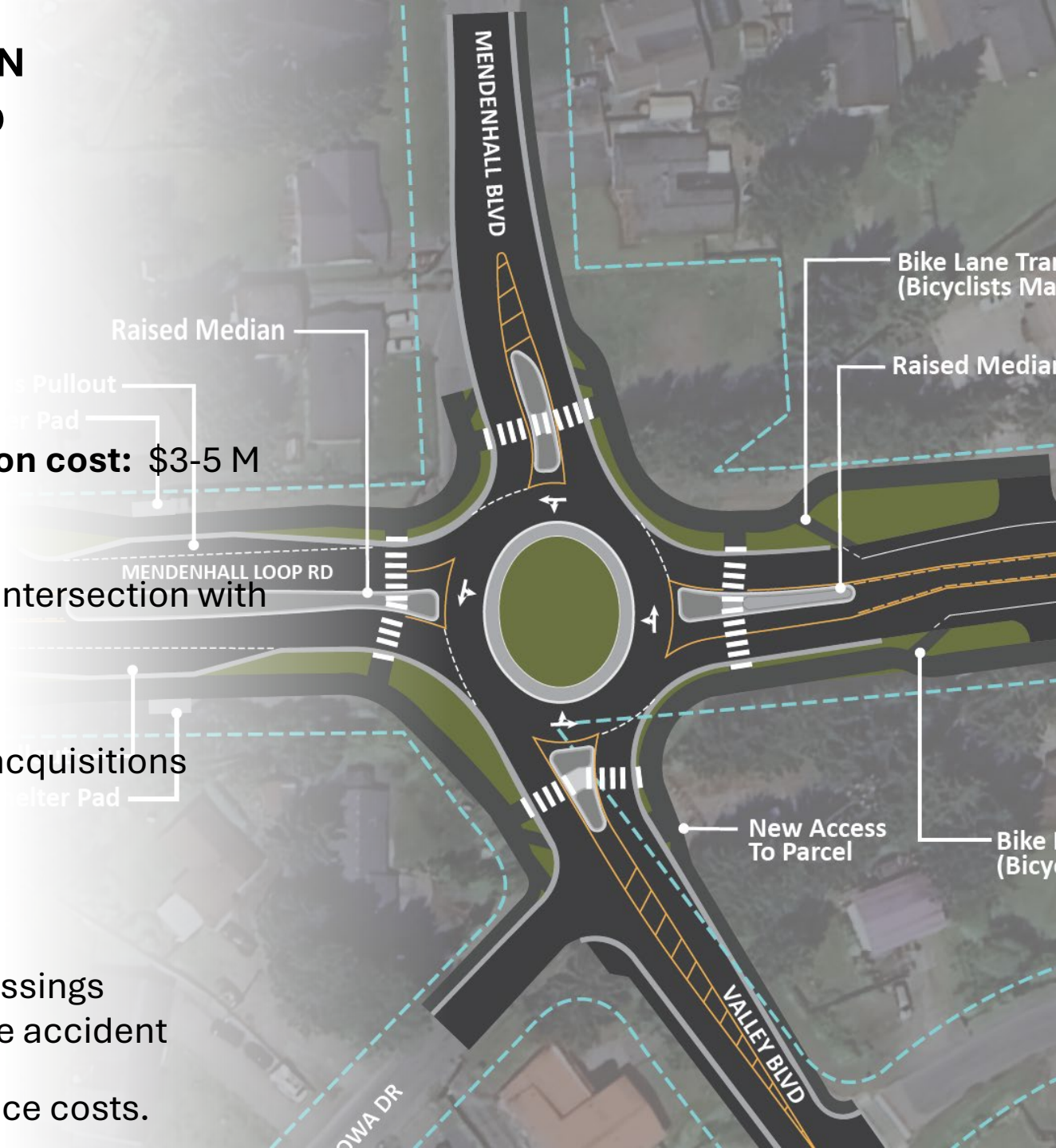
SOUTHCOAST REGION: STATE STREET PAVEMENT REHABILITATION

- **Construction:** 2025 – 2026
- **Construction cost:** ~\$27M
- **Scope:**
 - Resurface the roadway
 - Replace drainage
 - Replace curb and gutter
 - Upgrade curb ramps
- **Potential Challenges:**
 - Historically significant area
 - Known contaminated sites
 - High traffic



SOUTHCOAST REGION DESIGN: LOOP ROAD VALLEY BLVD INTERSECTION IMPROVEMENTS

- **Construction:** 2026
- **Estimated construction cost:** \$3-5 M
- **Scope:**
 - Replace the lighted intersection with roundabout
- **Potential Challenges:**
 - Small Right-of-Way acquisitions
 - 106 completion.
- **Benefits:**
 - Reduced delays
 - Safer pedestrian crossings
 - Elimination of T-bone accident potential
 - Reduced maintenance costs.



SOUTHCOAST REGION: ANGOON AIRPORT

- **Goal:** Bid Ready 2026 Plans (*Funding Dependent*)
- **Estimated project cost:** > \$60 M
- **Scope:** New Paved Airport Runway and Taxiway
- **Potential Challenges:** Funding availability, Right-of-Way Acquisition timing.
- **Achievements:** Shelf ready plan set by summer



PRIMARY NEED

Improve Intersection Safety



Partial Access Signalized Intersection

SECONDARY NEEDS

Provide Alternate Driving Route



Glacier Lemon Spur Extension

Improve Non-motorized Access



Protected Pedestrian Crossing
(either at-grade signalized or pedestrian bridge)

SOUTHCOAST REGION DESIGN: YANDUKIN INTERSECTION IMPROVEMENTS





Intersection Improvements

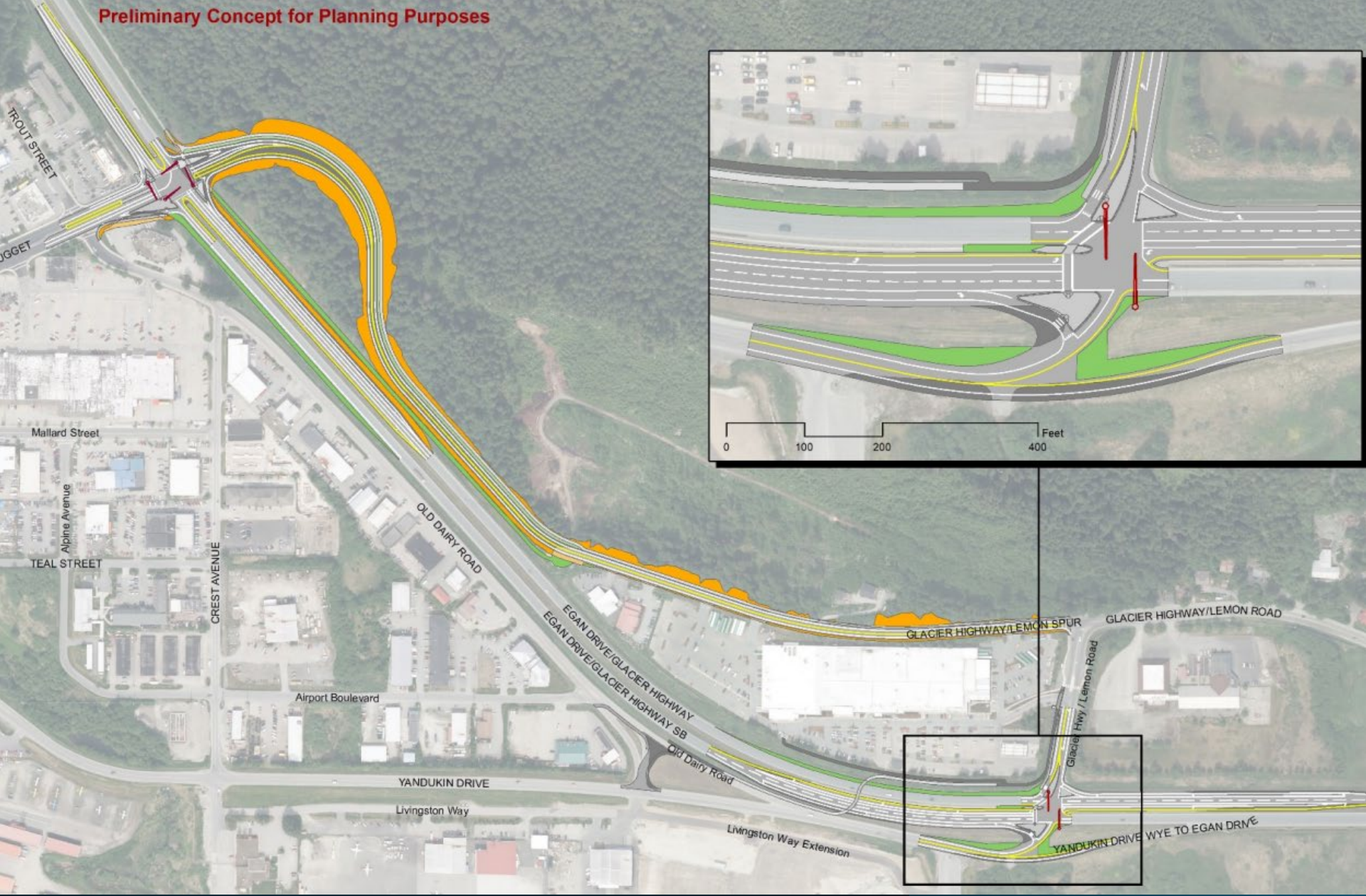
4 Phased Approach

- **Phase 1 (Completed 2024)**
 - Lane reconfiguration and Radar Feedback and Seasonal Speed Reduction
- **Phase 2 (Design Underway)**
 - Signal with Protected Left Turns
 - Pedestrian Crossing Features
- **Phase 3 (Seeking Funding)**
 - Creation of the Redundant Link
 - Improved Pedestrian Facilities
- **Phase 4**
 - Potential Pedestrian Overpass

**SOUTHCOAST REGION DESIGN:
YANDUKIN INTERSECTION
IMPROVEMENTS**



Preliminary Concept for Planning Purposes



SOUTHCOAST REGION DESIGN: YANDUKIN INTERSECTION IMPROVEMENTS





SOUTHCOAST REGION DEVELOPING PROJECT PARTNERSHIPS



Need: Culverts and Bridges across the Region and within the Tribal Transportation Network are reaching end of their service life

Challenge: Finding funding to replace this infrastructure before service degradation or fish passage is hindered.

Funding Environment Changed: Opening Partnership Potential to Explore.

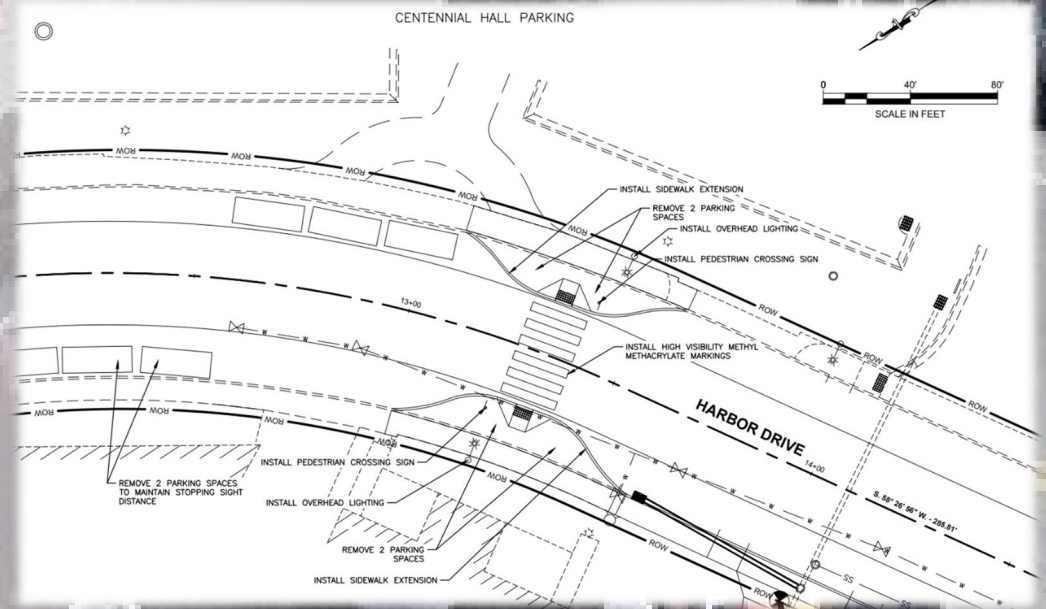
Thank you
Ketchikan Indian Community
Tlingit & Haida

**SOUTHCOAST REGION DESIGN: TRIBAL
PARTNERSHIP BRIDGES & CULVERTS**



SOUTHCOAST REGION DESIGN: SITKA HARBOR DRIVE CROSSWALK

- **Construction:** 2027
- **Estimated project cost:** ~\$1 M
- **Scope:** Install bulb-outs and pedestrian crossing
- **Potential Challenges:**
 - Loss of parking
 - Meeting lighting standards
 - Construction timing
- **Benefits:**
 - Safer pedestrian crossing
 - More intuitive pedestrian routing and dispersal



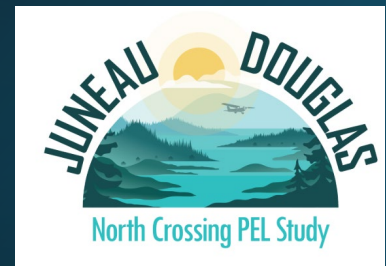
Estimated construction cost: \$360M- \$530M or \$1B+

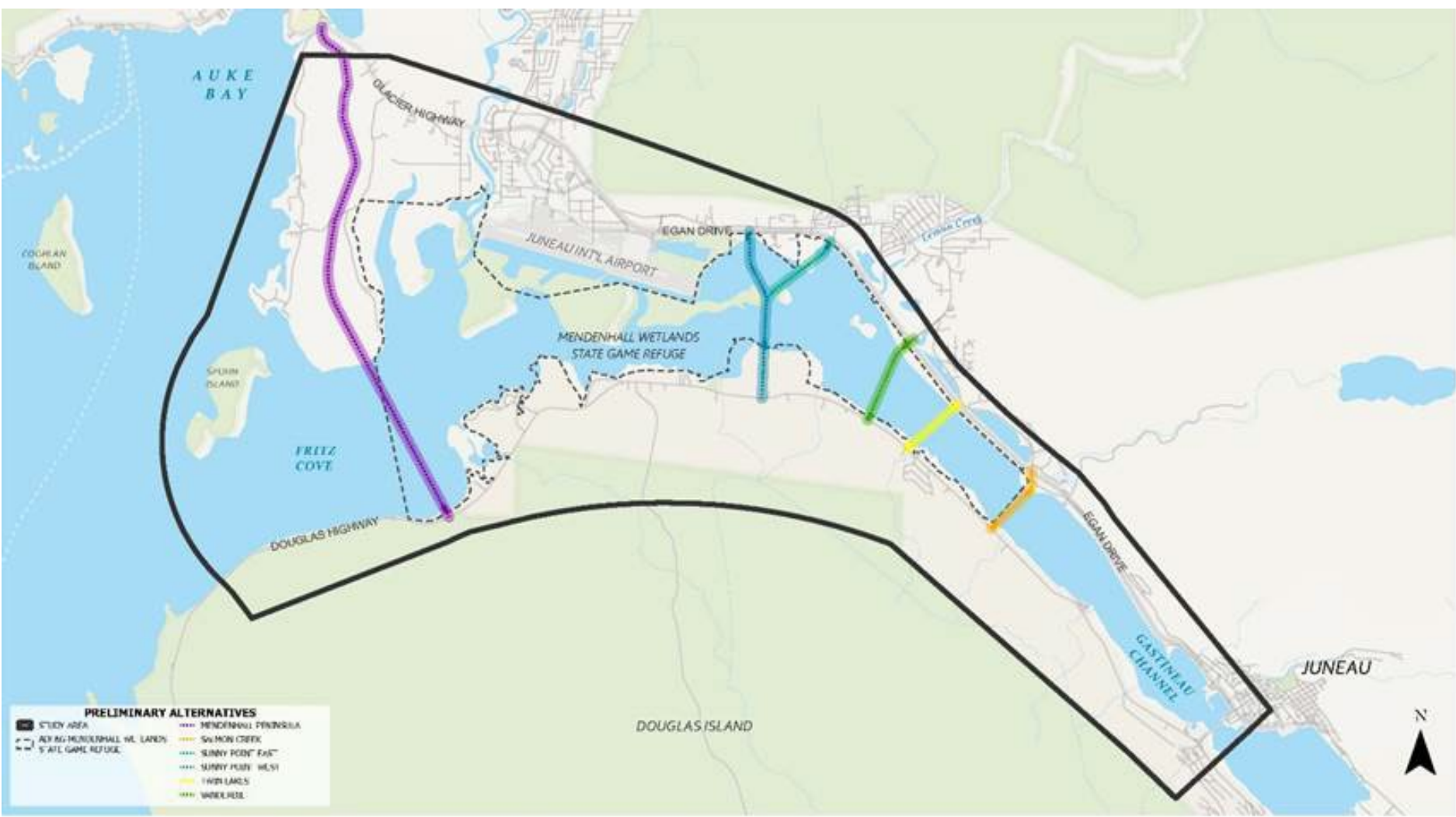
Purpose: The purpose of the Juneau Douglas North Crossing PEL Study is to identify ways to improve the connection between Douglas Island and Juneau. The secondary purposes are to identify ways to improve transportation for non-motorized users and reduce transportation related energy consumption.

Next Steps:

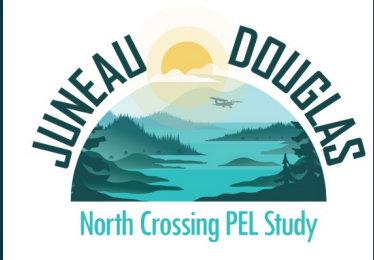
- Final Public Meeting Upcoming
- Moving to PEL Study Completion Spring/Summer

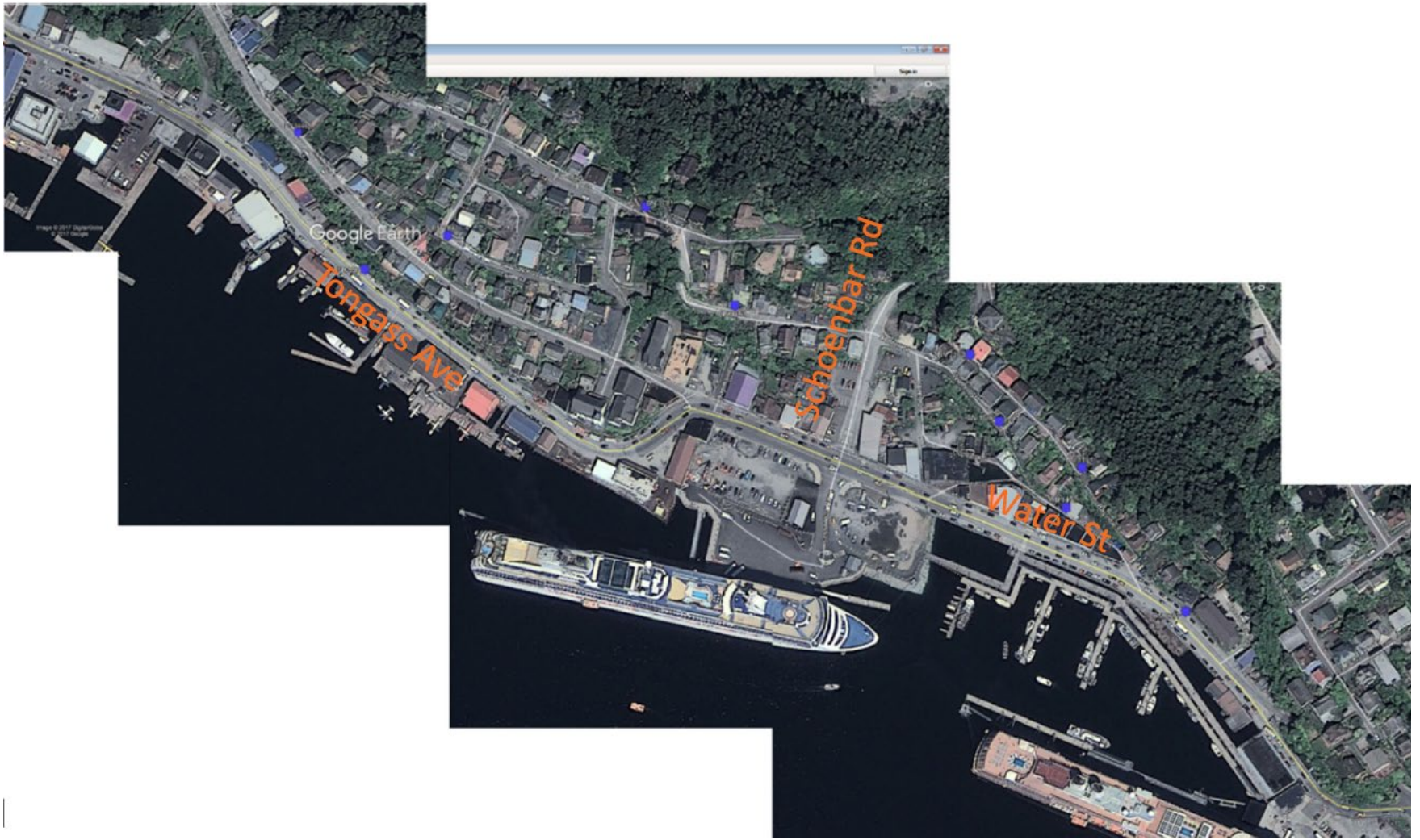
**SOUTHCOAST REGION DESIGN: JUNEAU
DOUGLAS CROSSING PEL STUDY**





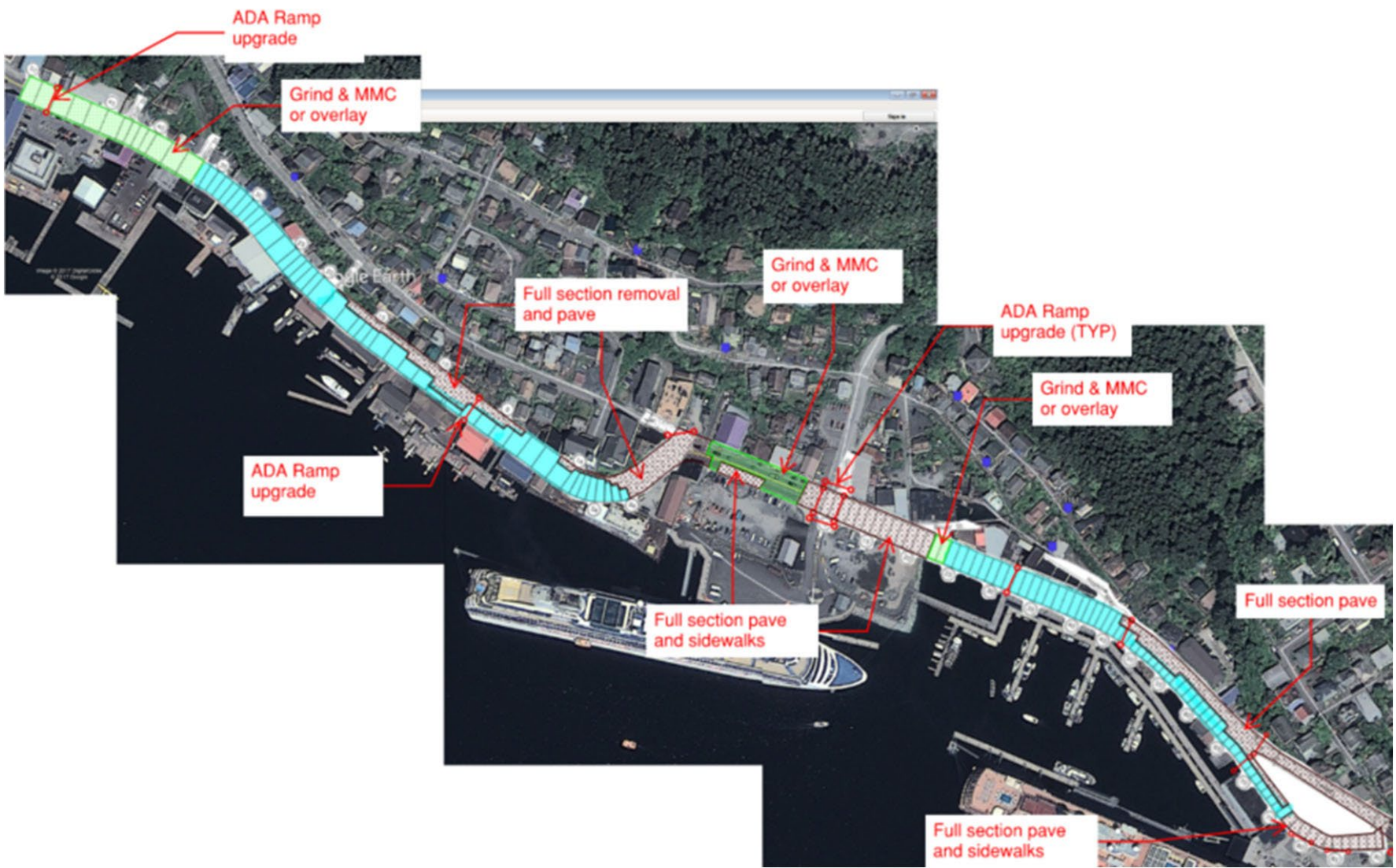
SOUTHCOAST REGION DESIGN: JUNEAU DOUGLAS NORTH CROSSING PEL STUDY





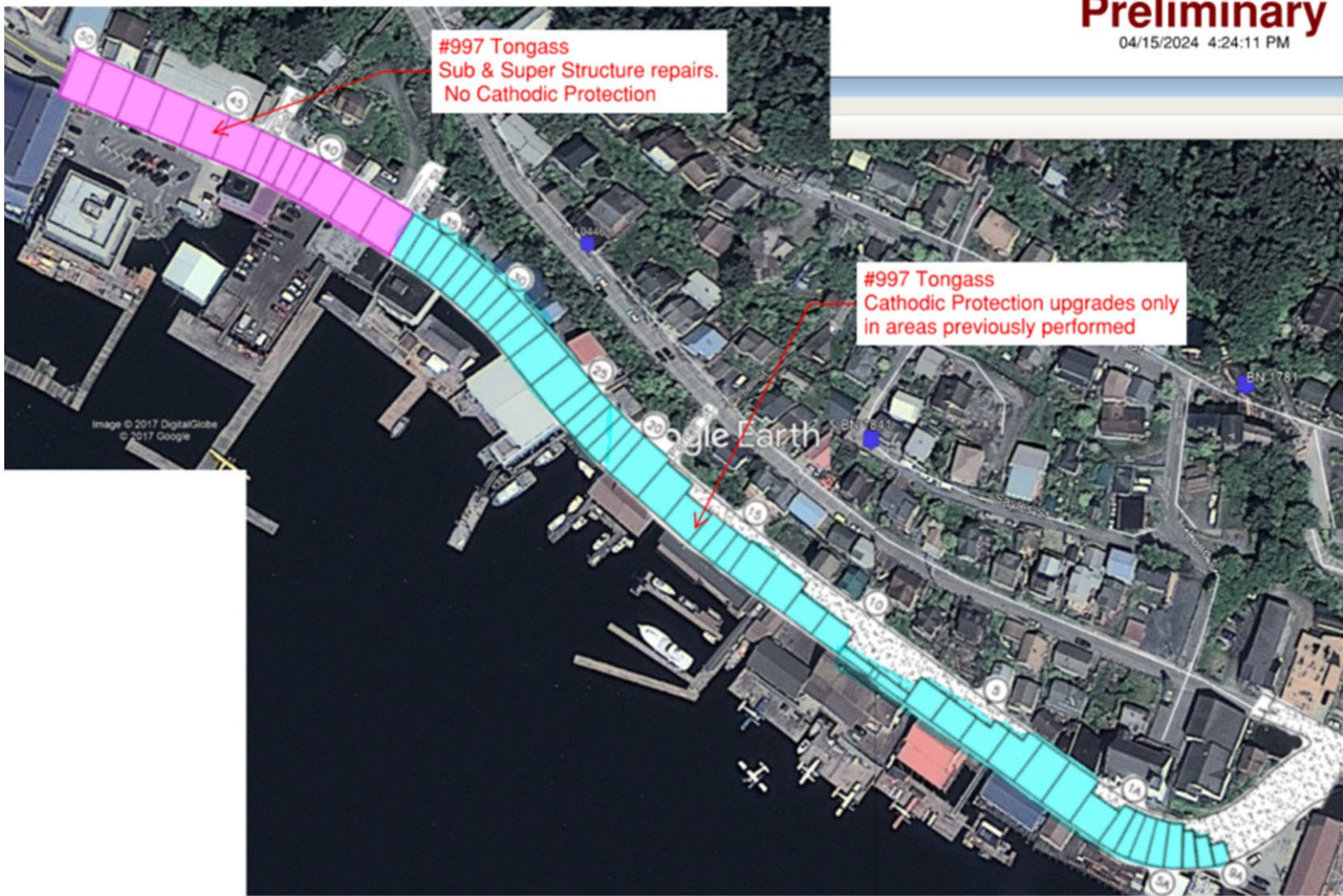
SOUTHCOAST REGION DESIGN: KETCHIKAN & WATERSTREET VIADUCTS





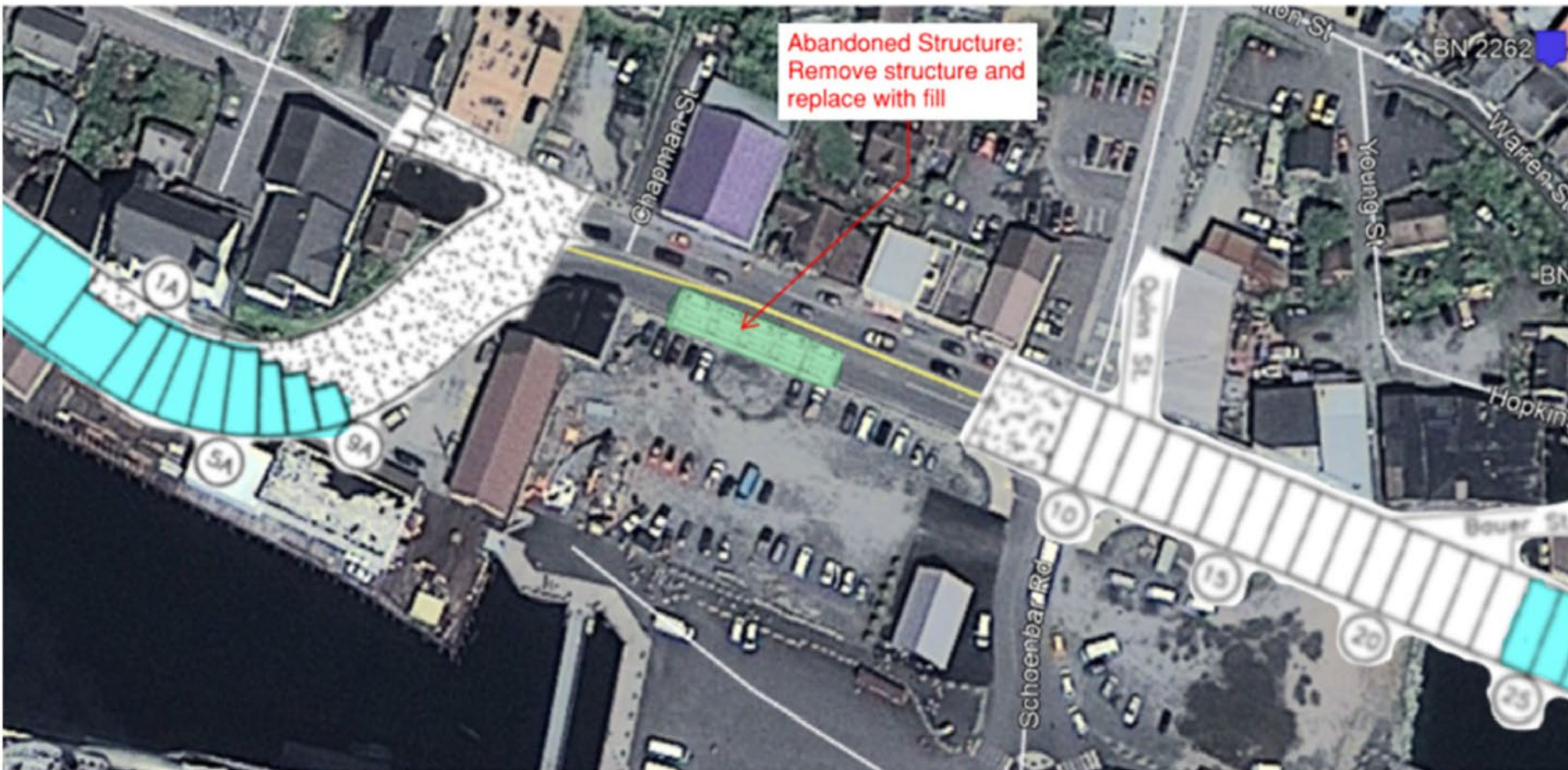
SOUTHCOAST REGION DESIGN: KETCHIKAN & WATERSTREET VIADUCTS





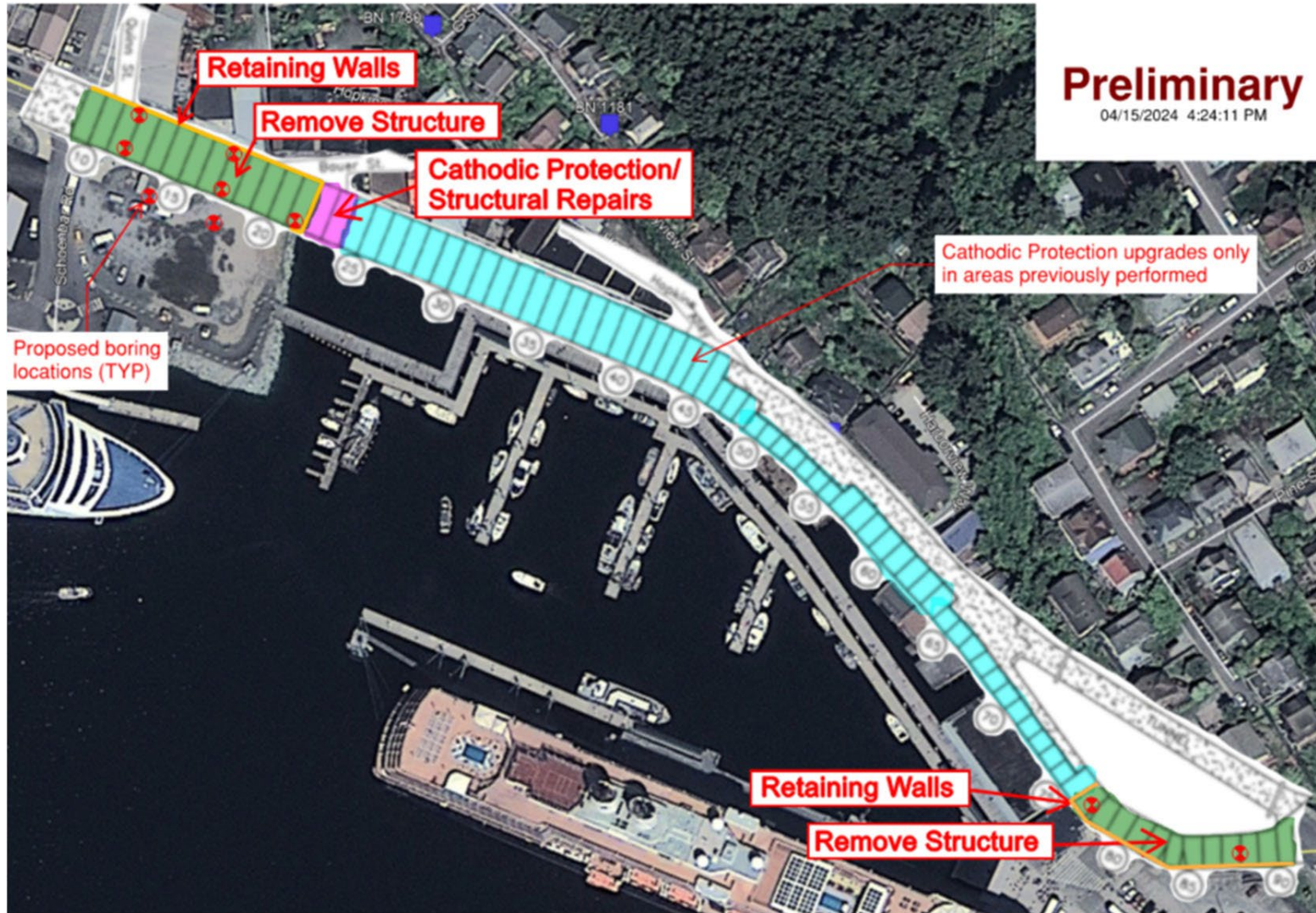
SOUTHCOAST REGION DESIGN: KETCHIKAN & WATERSTREET VIADUCTS





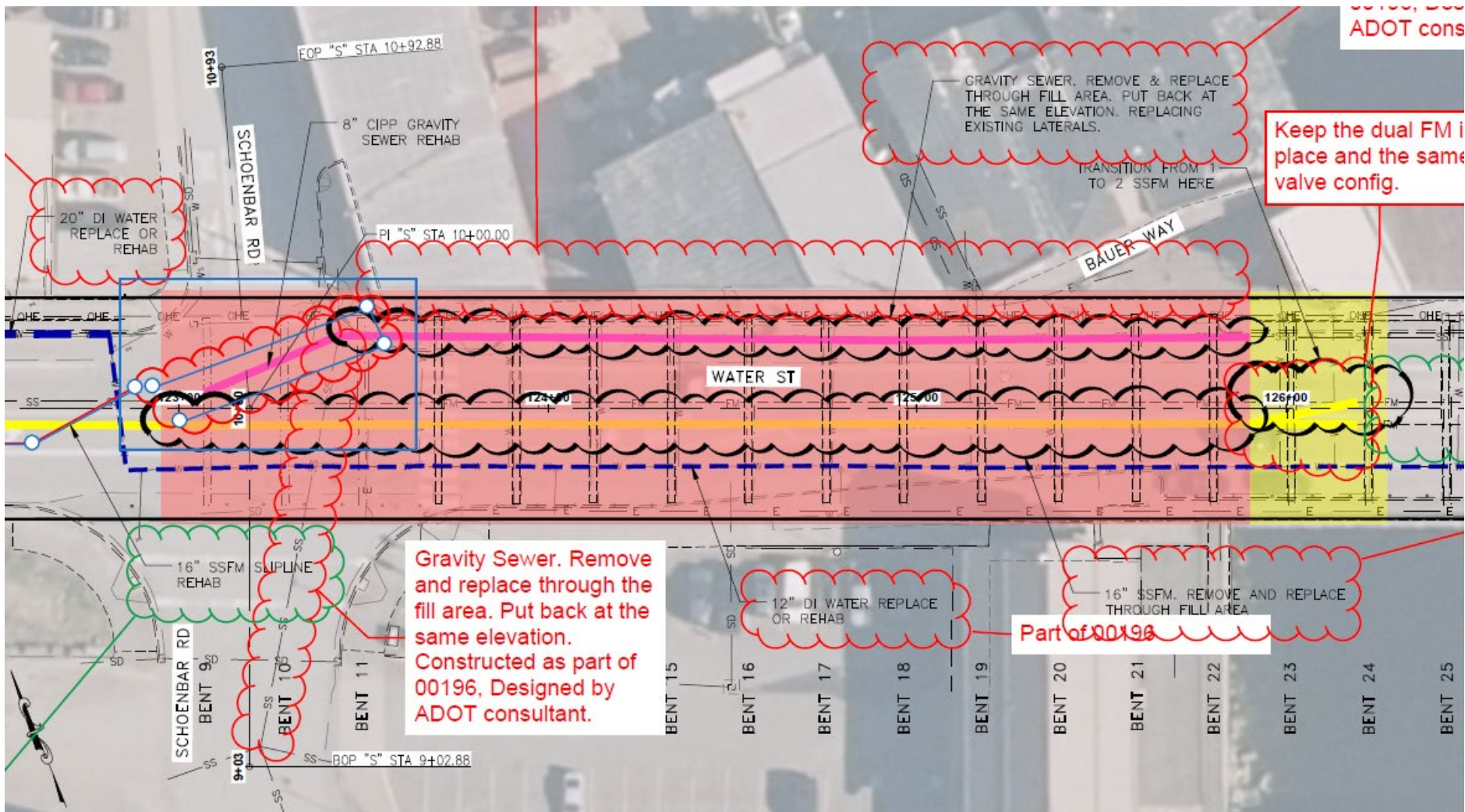
SOUTHCOAST REGION DESIGN: KETCHIKAN & WATERSTREET VIADUCTS





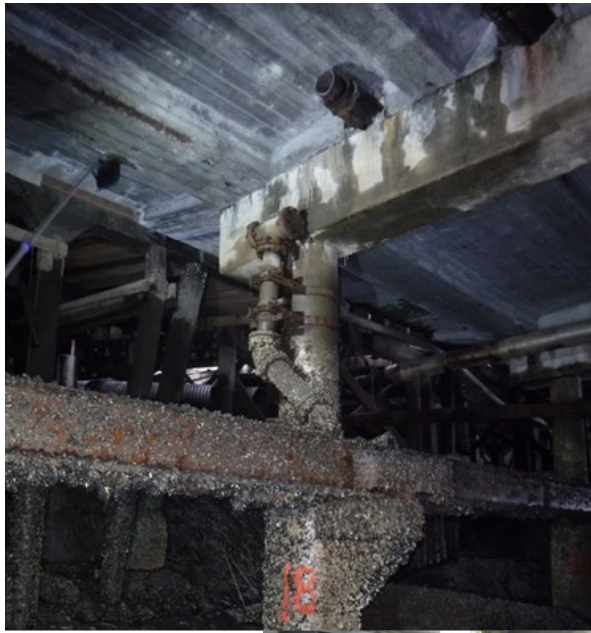
SOUTHCOAST REGION DESIGN: KETCHIKAN & WATERSTREET VIADUCTS





SOUTHCOAST REGION DESIGN: KETCHIKAN & WATERSTREET VIADUCTS



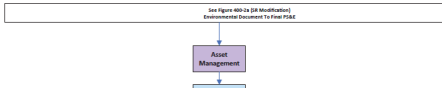


SOUTHCOAST REGION DESIGN: KETCHIKAN & WATERSTREET VIADUCTS



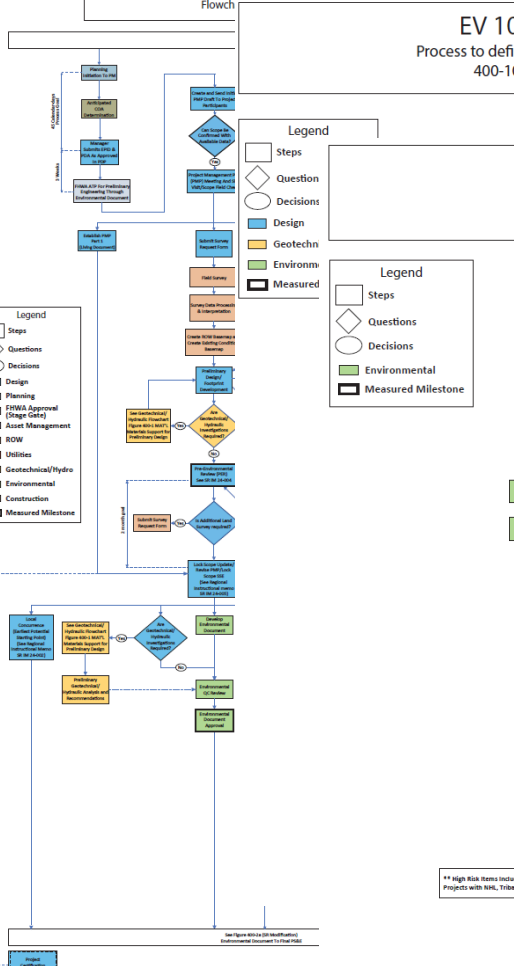
Asset Management Through Planning Initiation

Figure 400-1a (SR Modification)
Flowchart For Processing Fed-Aid Projects



Planning Initiation Through Environmental Document

Figure 400-1b (SR Modification)
Flowchart

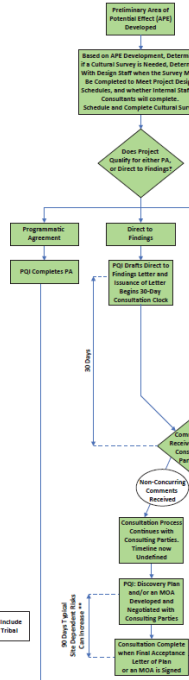


EV 106 Process

Process to define for Geotech-FHWA
400-106 FHWA GEO

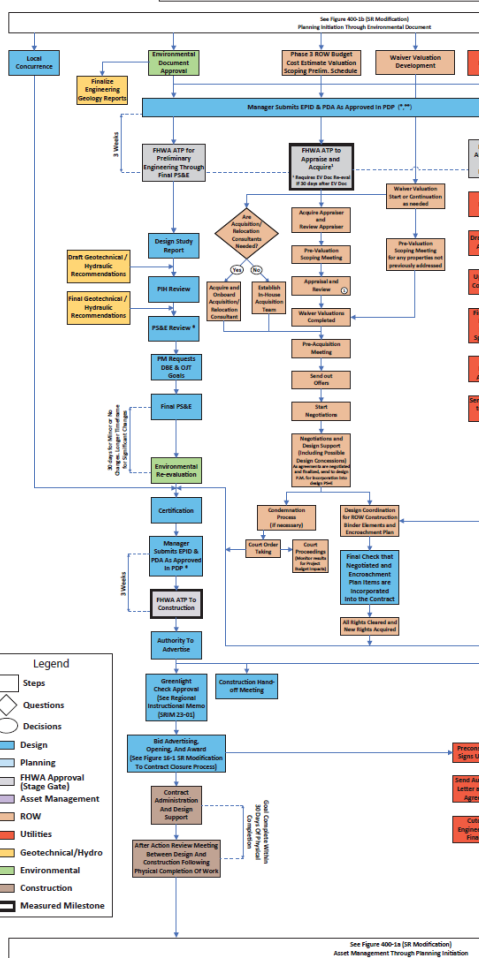
EV 106 Proc

For FHWA
400-106 FHWA



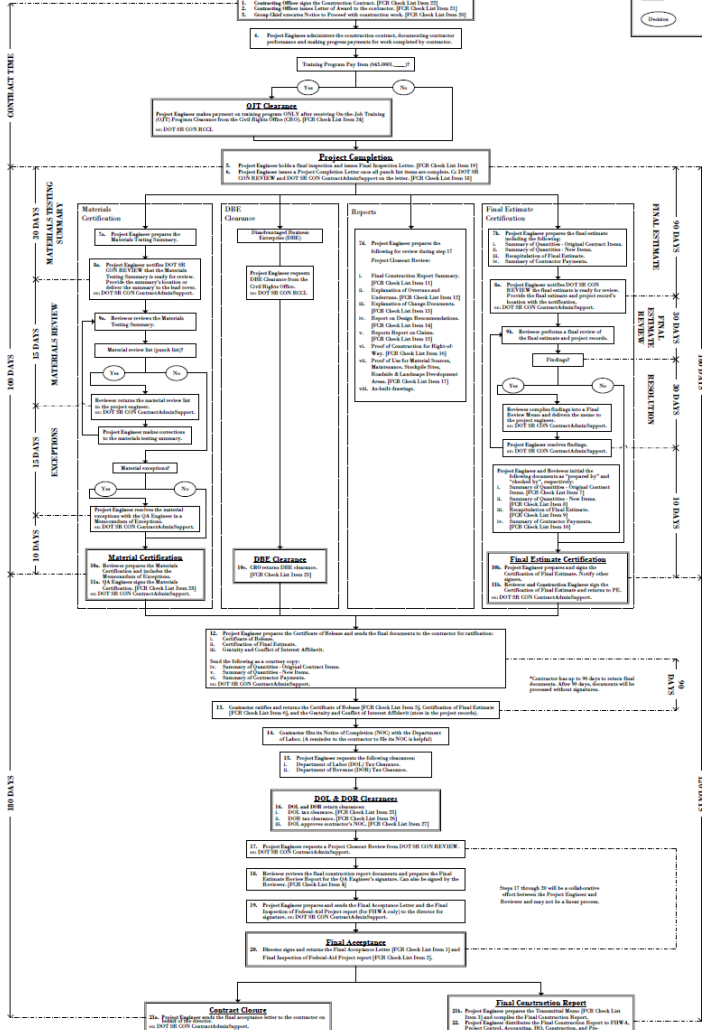
Environmental Document To Final Estimate

Figure 400-2a (SR Modification)
Flowchart For Processing Fed-Aid Project



Contract Close Process

Figure 14-1 (SR Modification)
Flowchart For Processing Fed-Aid Project



RUNNING THE PROCESS





Keeping Alaska Moving
Gunalchéesh

Christopher Goins, PE

907-465-1762

christopher.goins@alaska.gov