

# Southeast ALASKA

**MODERN - RESILIENT - AGILE**

*Building a safer, stronger, and more sustainable transportation future—  
together*



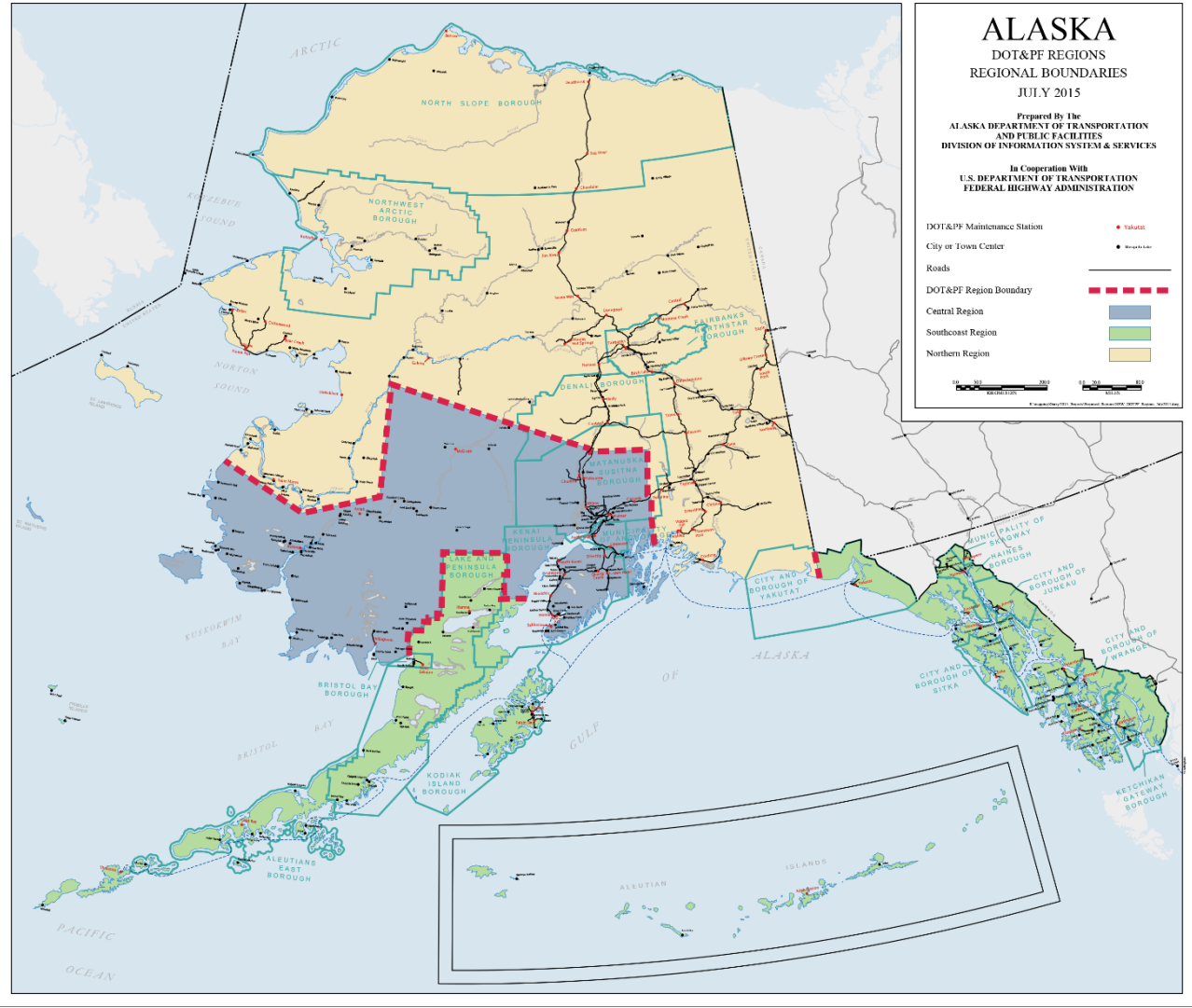
LAND, AIR & SEA

*it takes a  
team*

**SE Conference  
Mid-Session  
Summit**

**2025 Regional  
Update**

**Christopher Goins, PE**

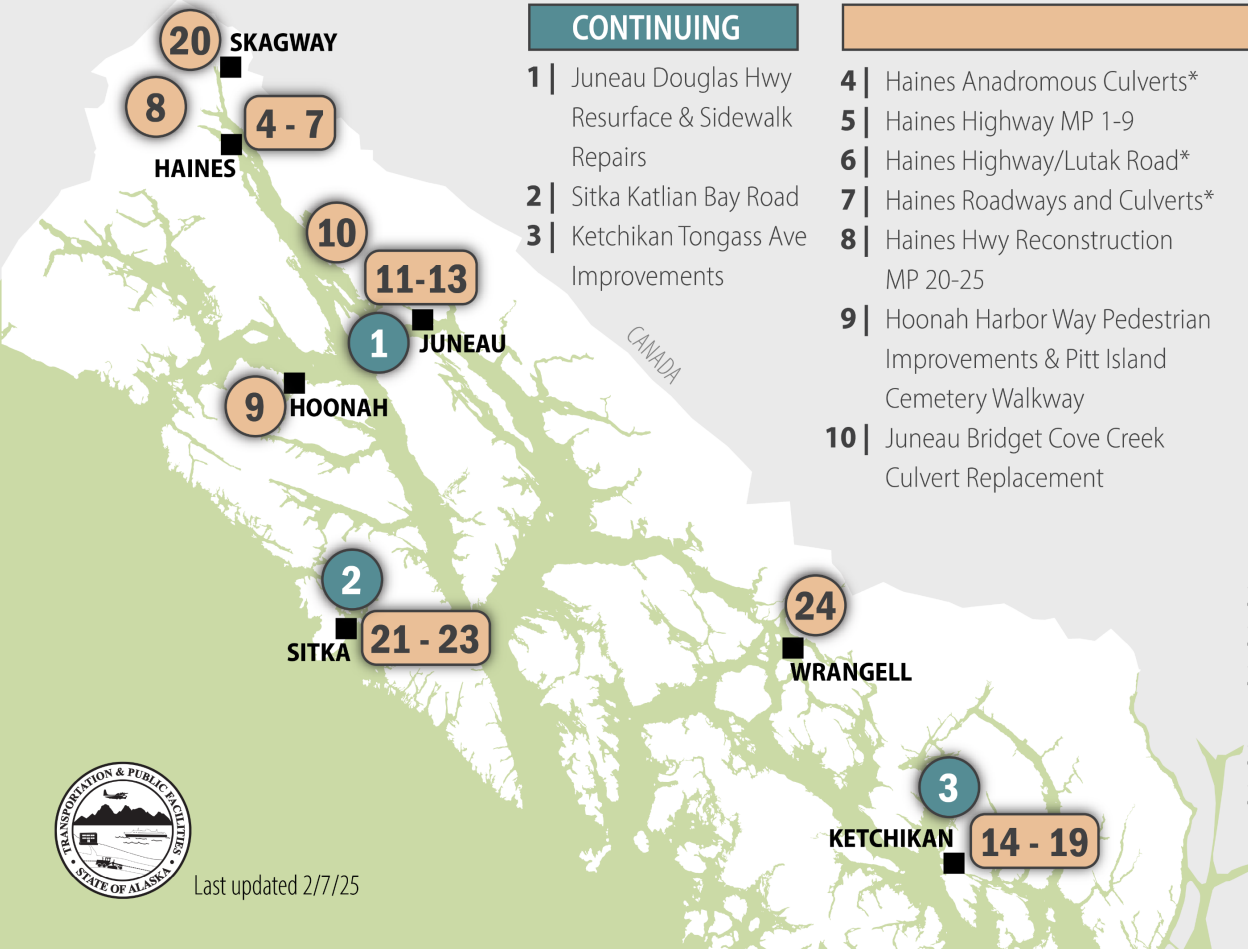


## SOUTHCOAST REGION

Road Lane Miles	1,859.5
Maintenance Stations	20
Maintained Airports	45
Seaplane Bases	17
Bridges	286
Harbors	16
Communities	86
Boroughs	12
City Governments	51
Tribes	60

# 2025 REGIONAL STATS

# SOUTHEAST | 2025 CONSTRUCTION



Last updated 2/7/25

## CONTINUING

- 1 | Juneau Douglas Hwy Resurface & Sidewalk Repairs
- 2 | Sitka Katlian Bay Road
- 3 | Ketchikan Tongass Ave Improvements

## NEW IN 2025

- 4 | Haines Anadromous Culverts\*
- 5 | Haines Highway MP 1-9
- 6 | Haines Highway/Lutak Road\*
- 7 | Haines Roadways and Culverts\*
- 8 | Haines Hwy Reconstruction MP 20-25
- 9 | Hoonah Harbor Way Pedestrian Improvements & Pitt Island Cemetery Walkway
- 10 | Juneau Bridget Cove Creek Culvert Replacement
- 11 | Juneau Glacier Highway Chip Seal - Industrial to Roundabout\*
- 12 | Juneau Waydelich Creek: Upper & Lower Wall Repairs
- 13 | Juneau Roadways and Culverts\*
- 14 | Ketchikan Ferry Terminal Improvements - Phase II
- 15 | Ketchikan HSIP Stedman & Deermount Street Intersection Safety Improvements
- 16 | Ketchikan N. Tongass Highway Resurface: Airport Ferry Terminal to Ward Creek Bridge Stage I
- 17 | Ketchikan N. Tongass Highway Resurface: Airport Ferry Terminal to Ward Creek Bridge Stage II\*
- 18 | Ketchikan Sayles/Gorge St Viaduct Improvement
- 19 | Ketchikan Wolfe Pt Slope Stability Improvements CMGC
- 20 | Skagway State Street Pavement Rehabilitation
- 21 | Sitka Airport Terminal Building Improvements - Stage 1\*
- 22 | Sitka Halibut Point Rd & Peterson Intersection Safety Improvements
- 23 | Sitka Seawalk Phase II
- 24 | Wrangell Airport Gates and Security Upgrades

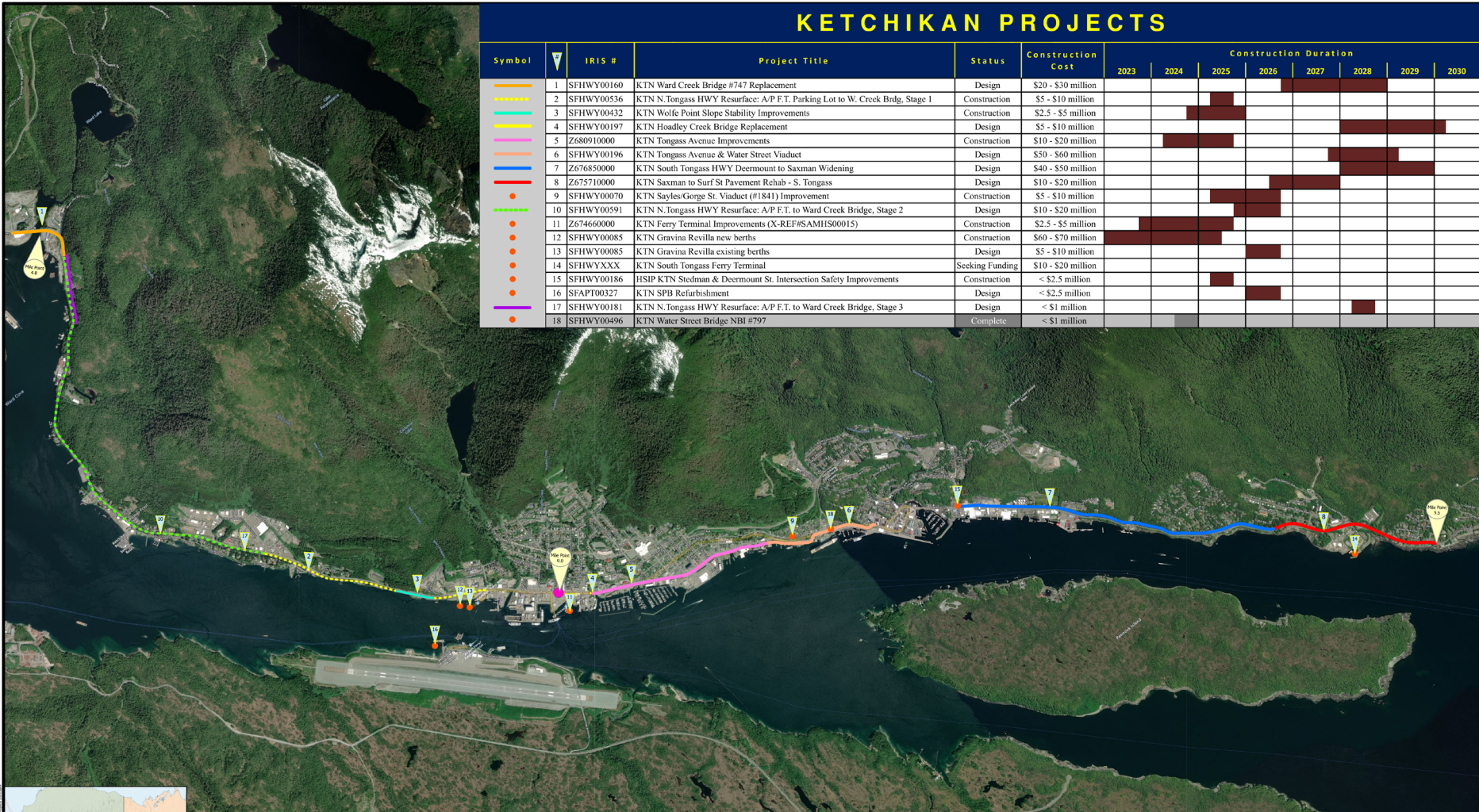
\*Indicates projects that will be advertised later in the season and may only see preliminary construction in 2025

# 2025 SOUTHEAST CONSTRUCTION PROGRAM

# KETCHIKAN CONSTRUCTION PROGRAM 2023-2030

## KETCHIKAN PROJECTS

Symbol	IRIS #	Project Title	Status	Construction Cost	Construction Duration								
					2023	2024	2025	2026	2027	2028	2029	2030	
Orange line	1 SFHWY00160	KTN Ward Creek Bridge #747 Replacement	Design	\$20 - \$30 million									
Yellow dashed line	2 SFHWY00536	KTN N. Tongass HWY Resurface: A/P F.T. Parking Lot to W. Creek Brdg, Stage 1	Construction	\$5 - \$10 million									
Cyan line	3 SFHWY00432	KTN Wolfe Point Slope Stability Improvements	Construction	\$2.5 - \$5 million									
Yellow line	4 SFHWY00197	KTN Hoadley Creek Bridge Replacement	Design	\$5 - \$10 million									
Pink line	5 Z680910000	KTN Tongass Avenue Improvements	Construction	\$10 - \$20 million									
Orange line	6 SFHWY00196	KTN Tongass Avenue & Water Street Viaduct	Design	\$50 - \$60 million									
Blue line	7 Z676850000	KTN South Tongass HWY Deermount to Saxman Widening	Design	\$40 - \$50 million									
Red line	8 Z675710000	KTN Saxman to Surf St Pavement Rehab - S. Tongass	Design	\$10 - \$20 million									
Orange circle	9 SFHWY00070	KTN Sayles Gorge St. Viaduct (#1841) Improvement	Construction	\$5 - \$10 million									
Green dashed line	10 SFHWY00591	KTN N. Tongass HWY Resurface: A/P F.T. to Ward Creek Bridge, Stage 2	Design	\$10 - \$20 million									
Orange circle	11 Z674660000	KTN Ferry Terminal Improvements (X-REF#SAMHS00015)	Construction	\$2.5 - \$5 million									
Orange circle	12 SFHWY00085	KTN Gravina Revilla new berths	Construction	\$60 - \$70 million									
Orange circle	13 SFHWY00085	KTN Gravina Revilla existing berths	Design	\$5 - \$10 million									
Orange circle	14 SFHWYXXX	KTN South Tongass Ferry Terminal	Seeking Funding	\$10 - \$20 million									
Orange circle	15 SFHWY00186	HSP KTN Stedman & Deermount St. Intersection Safety Improvements	Construction	< \$2.5 million									
Orange circle	16 SFAP100327	KTN SPB Refurbishment	Design	< \$2.5 million									
Purple line	17 SFHWY00181	KTN N. Tongass HWY Resurface: A/P F.T. to Ward Creek Bridge, Stage 3	Design	< \$1 million									
Orange circle	18 SFHWY00496	KTN Water Street Bridge NBI #797	Complete	< \$1 million									

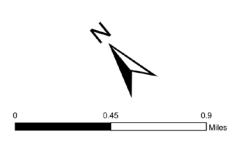


## KETCHIKAN PROJECT OVERVIEW

STATE OF ALASKA

DEPARTMENT OF TRANSPORTATION & PUBLIC FACILITIES

SOUTHCOAST REGION | 6860 GLACIER HWY | JUNEAU, AK 99811 | 907-465-1763



# SOUTHCOAST REGION SUCCESSIONS

- Contractor Payments UP in 2025
- M&O Vacancy Rate Down to 6%
- Design Vacancy Rate is Down to 7%
- Gustavus Airport LEO Service funded through 2025
- Regional Partnerships Developing
- Improvement Measures Being Implemented



# SOUTHCOAST REGION CHALLENGES

- Changes In Buy America
  - Construction Material Requirements
  - General Waiver for Manufactured Products Rescinded
- Inflationary Pressures
- Section 106 – Historical Requirements
- Construction Vacancy Rate
- Southeast for Mechanics Vacancy Rate





***Keeping Alaska Moving***  
***Gunalchéesh***

***Christopher Goins, PE***

***907-465-1762***

***[christopher.goins@alaska.gov](mailto:christopher.goins@alaska.gov)***