

JUNEAU SOLID WASTE PLANNING

Dianna Robinson

Environmental Project Specialist
City & Borough of Juneau

Dianna.Robinson@juneau.gov



JUNEAU WASTE 101

HAULING

SERVICE*

Hauls waste and curbside recycling to landfill

PROVIDER



PRIVATELY OWNED

DISPOSAL

Accepts waste



PRIVATELY OWNED

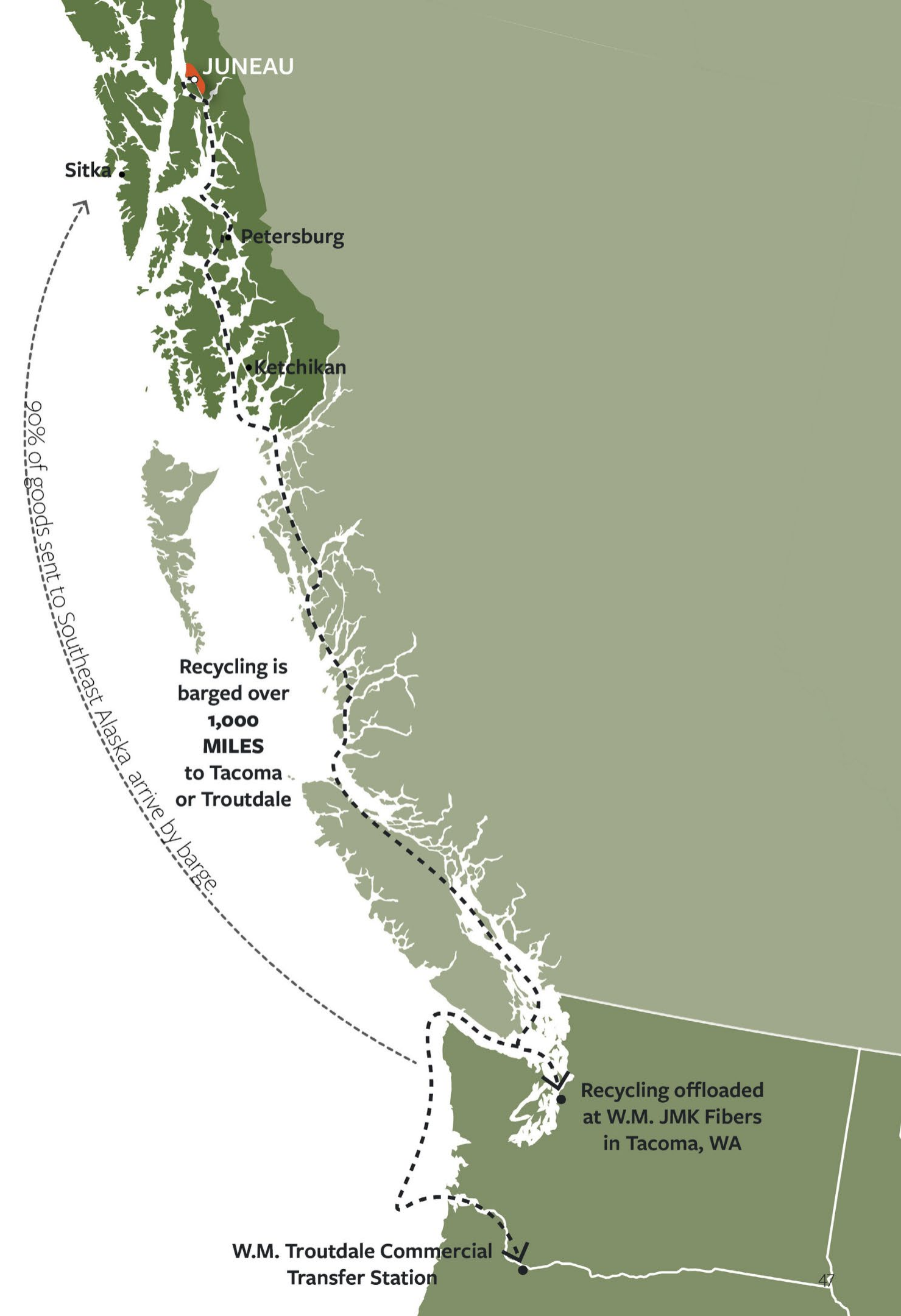
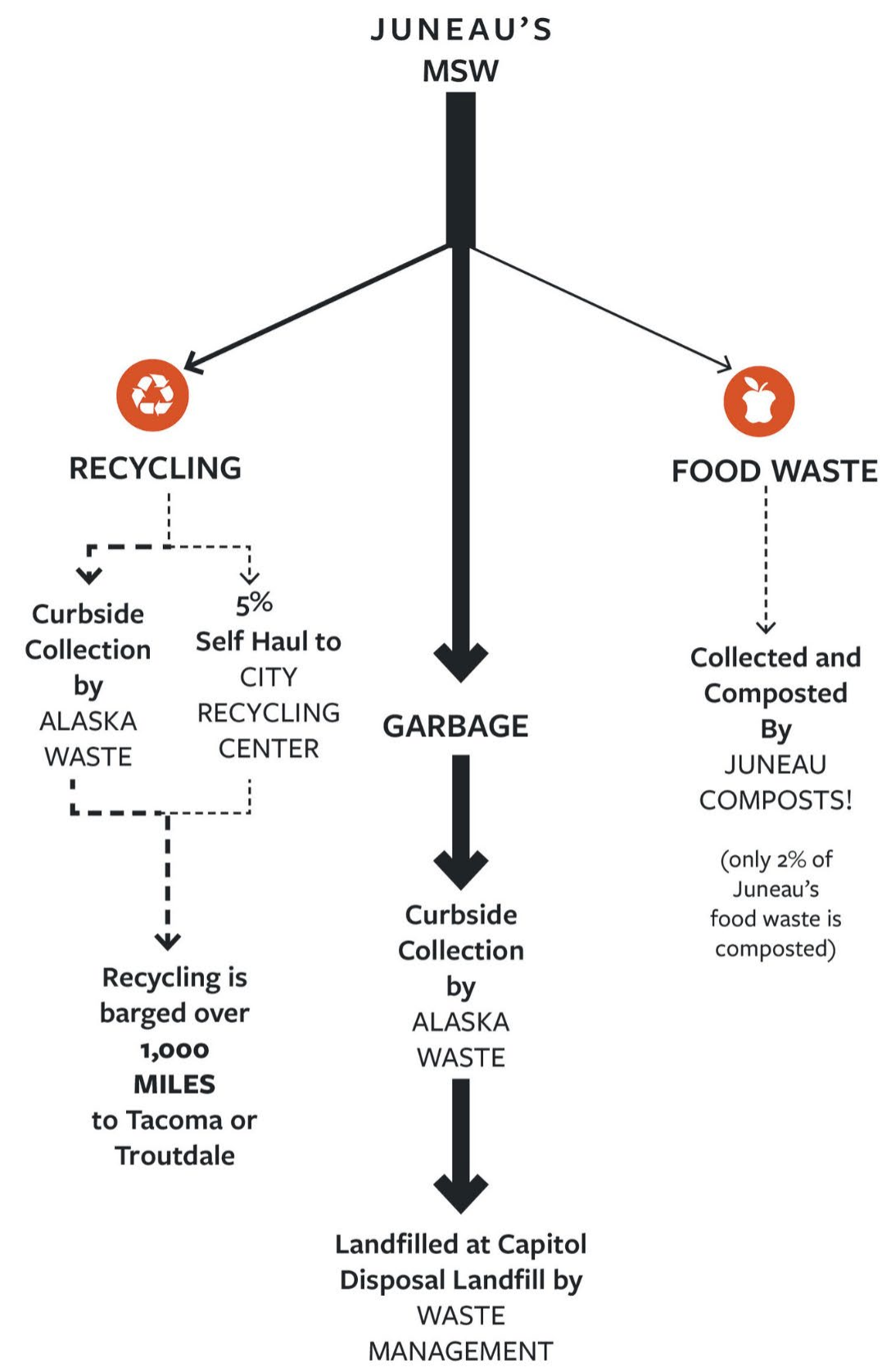
MUNICIPAL

Recycling Center
Junk Vehicle Disposal
Household Hazardous Waste



*IN ADDITION TO THE LISTED SERVICES, JUNEAU COMPOSTS! ACCEPTS FOOD, YARD WASTE, AND OTHER ORGANICS; SKOOKUM SALES & RECYCLING AND D&S RECYCLING ALSO ACCEPT SCRAP METALS.

JUNEAU WASTE FLOWS





IN 2023:

JUNEAU LANDFILLED:

- 22,346 tons of municipal solid waste (MSW)
- 5,176 tons of construction and demolition waste (C&D)

CBJ DIVERTED:

- 993 tons of recyclables (~4% of waste stream)
- 286 tons of HHW (~1% of waste stream)

ALASKA WASTE DIVERTED:

- 665 tons of comingled recycling (~3% of waste stream)

JUNEAU COMPOSTS! DIVERTED:

- ~250 tons of food waste (~1% of waste stream)

JUNEAU'S WASTE PRODUCTION AND DIVERSION

JUNEAU ASSEMBLY GOAL 5.A

**IMPLEMENT A ZERO WASTE OR
WASTE REDUCTION PLAN, INCLUDING
DEVELOPMENT OF THE ZERO WASTE
SUBDIVISION**





ZERO WASTE



- **Zero Waste needs a lot of infrastructure and \$\$\$**
- **Implementation takes a long time**
 - **Planning**
 - **Construction**
 - **Behavior change**

JUNEAU'S DISPOSAL NEEDS ARE IMMEDIATE

SOLID WASTE BARRIERS

CBJ DOES NOT OWN/CONTROL JUNEAU'S WASTE STREAM

CBJ DOES NOT OWN/CONTROL THE LANDFILL

OUR ONLY LANDFILL WILL CLOSE WITHIN THE NEXT 10 YEARS

CBJ HAS NEVER HAD A FULLSCALE SOLID WASTE PROGRAM

GROWING GOVERNMENT IS DIFFICULT SEASONAL POPULATION ADDS COMPLEXITY

RECYCLING AND COMPOSTING INFRASTRUCTURE COSTS \$\$\$

SOLID WASTE DISPOSAL INFRASTRUCTURE COSTS \$\$\$

SHIPPING WASTE AND RECYCLING COSTS \$\$\$

SEALASKA'S GEOGRAPHY MAKES FACILITY SITING DIFFICULT

LACK OF COMPETITION = LACK OF OPTIONS

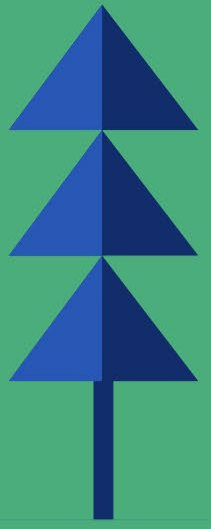
TRANSPORTATION LOGISTICS ARE COMPLEX AND ROUTES ARE INEFFICIENT

LACK OF CONTROL

SOLID WASTE PLANNING

- **DISPOSAL OPTIONS STUDY**
 - LANDFILL
 - WTE
 - SHIPPING WASTE SOUTH
- **TRANSFER STATION/‘WASTE CAMPUS’**

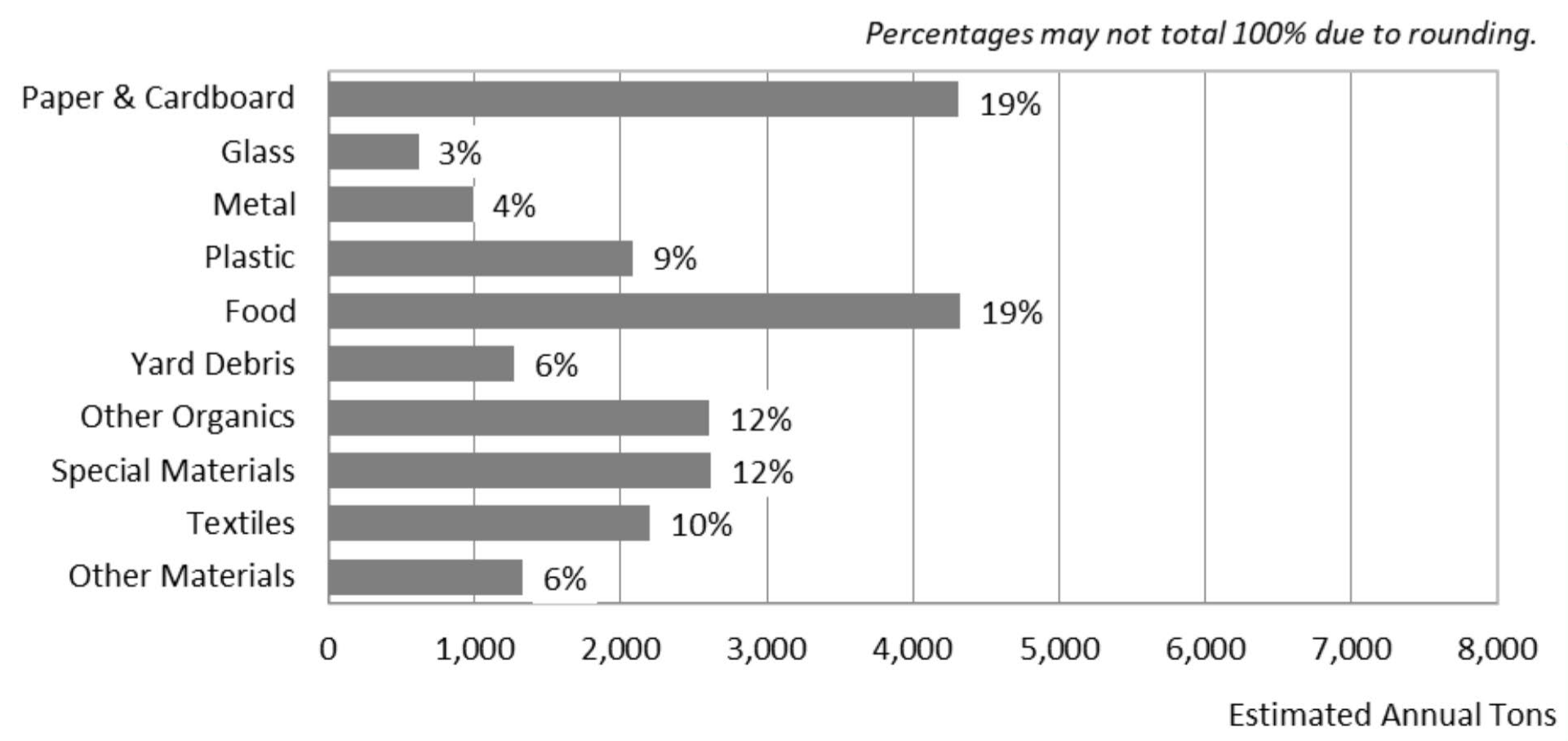
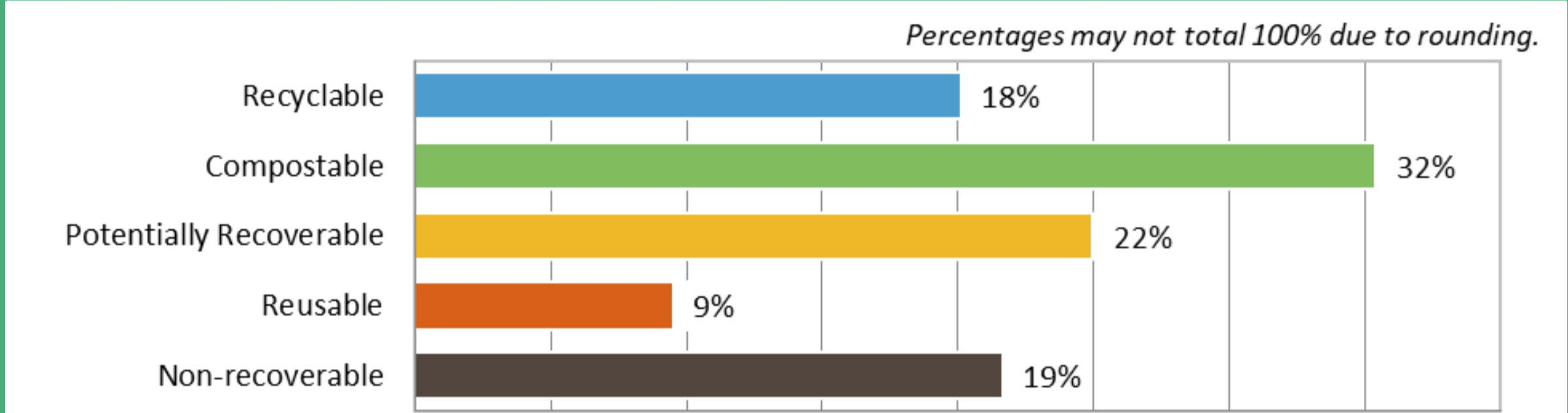




WASTE CHARACTERIZATION STUDY



CASCADIA CONSULTING



STUDY PERFORMED MAY 2024

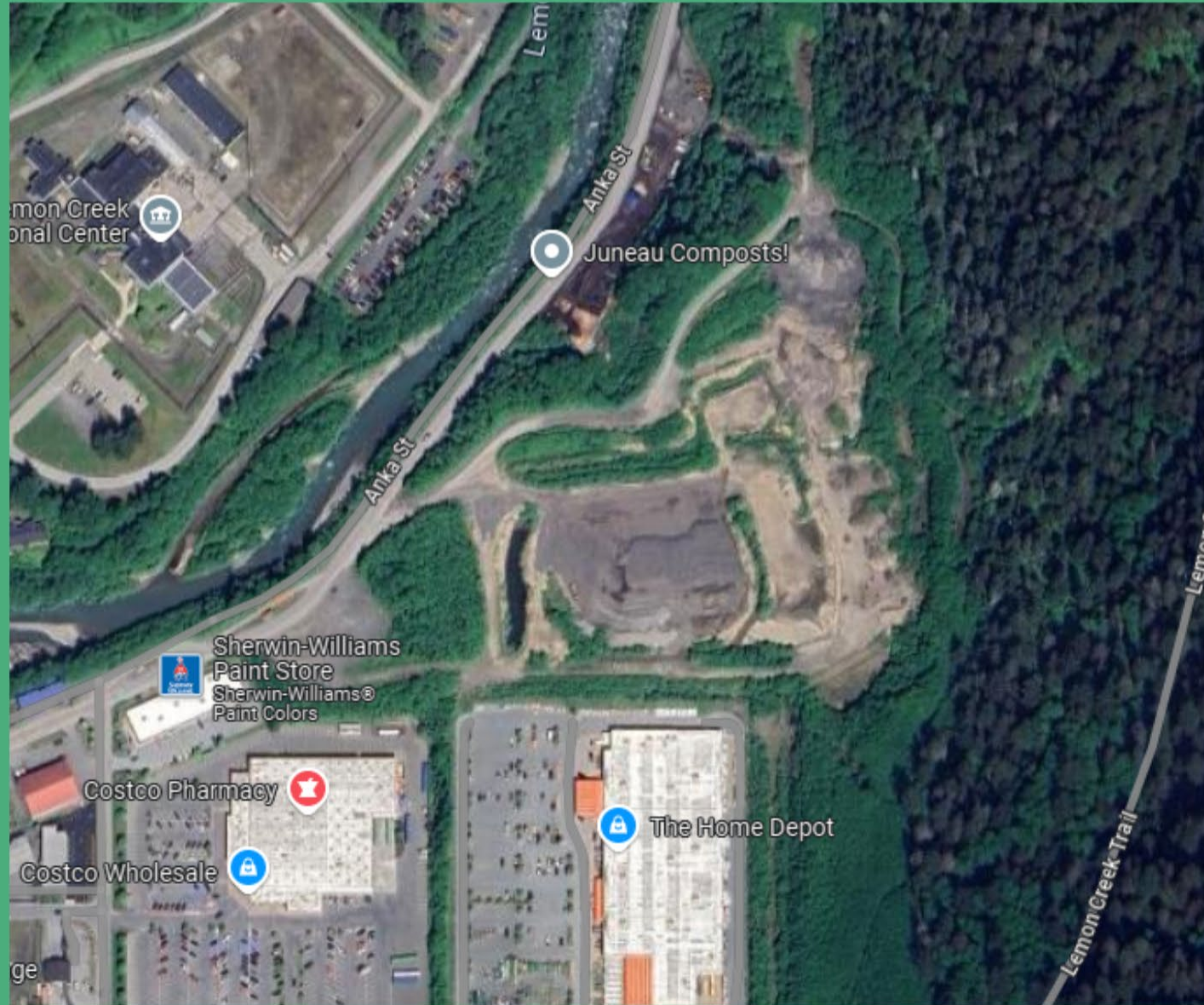
COMPOSTING

CBJ RECEIVED A FY23 CONGRESSIONALLY DIRECTED SPENDING AWARD FOR \$2.5 MILLION TO DEVELOP A LARGE-SCALE MUNICIPAL COMPOSTING FACILITY

- Environmental Review completed in April 2024
- Anticipated start winter of 2024/25



THE FUTURE?



CITY AND BOROUGH OF JUNEAU
ALASKA'S CAPITAL CITY

Admin Engineering Public Works JOOS Contact Us

SOLID WASTE PLANNING JUNEAU WASTE HISTORY

SOLID WASTE PLANNING

WE NEED TO TALK ABOUT OUR TRASH

If you live in Juneau, you've seen the landfill. Built in the 1960's, the Capital Disposal Landfill (formally the Channel Landfill) has been a growing presence in Juneau ever since. It's difficult to know when the landfill will close, but the best estimate is in 10-15 years.

What will the community do with its trash after the landfill closes?

JUNEAU SOLID WASTE 101

JUNEAU WASTE 101

NEWS & EVENTS

- April 18, 2024 "How well does Juneau recycle, and where does it all end up?" by Adelyn Baxter, KTOO
- RECORDING: March 7, 2024, 6:30 PM: JOOS Sustainability Session: Solid Waste Q&A Session
- February 5, 2024 Juneau Empire: Landfill fees rising 9% for residential trash, nearly tripling for metal, starting March
- Guidance for Alaska Waste's Curbside Recycling Program

MAILING LIST

SOLID WASTE PLANNING & ACTION STATUSES

Municipal Composting Facility: CBJ is in the process of working with the US EPA to receive the funding for the municipal composting facility. The Public Works and Facilities Committee (PWFC) will be considering procurement models for the operation of the future facility at their July or August meeting.

Municipal Composting Facility Procurement: The Public Works and Facilities Committee (PWFC) made a decision at their July 15, 2024 meeting to do a Request for Proposal (RFP) process to acquire an operator for the future composting facility.

Waste Characterization Study: Cascadia Consulting performed the waste characterization study in May 2024. A draft report is expected by the end of June 2024.

Solid Waste Disposal Options Study: Jacobs Engineering Group has been awarded the contract for this study. The anticipated completion date is December 2024.

Municipal Composting Facility – Construction Phase

Municipal Composting Facility – Design Phase

DOCUMENTS & LINKS

- July 15, 2024 Public Works and Facilities Committee Meeting – Composting Facility Procurement Question and Decision

FAQ

- What is the CBJ doing about the landfill?

juneau.org/engineering-public-works/solid-waste



THANK YOU!



juneau.org/engineering-public-works/solid-waste-waste-history

CITY AND BOROUGH OF JUNEAU
ALASKA'S CAPITAL CITY

ENGINEERING AND PUBLIC WORKS Engineering Public Works JOOS Contact Us

SOLID WASTE PLANNING JUNEAU WASTE HISTORY

JUNEAU'S WASTE HISTORY

FOLLOW JUNEAU'S SOLID WASTE JOURNEY

Beginning with the opening of the current landfill in the 1960s, this timeline shows the major events and changes in Juneau's solid waste history. Hopefully you find this resource valuable in understanding how Juneau got to its current solid waste situation.

Juneau's Solid Waste History

Follow the journey of waste management in the Juneau community.

City & Borough of Juneau, Alaska
January 10, 2024

Engineering & Public Works
155 Heritage Way
Juneau Alaska 99801
Telephone: 907-586-5254

© 2001-2024 City and Borough of Juneau