

Alaska Department of Transportation & Public Facilities

Connecting Communities – Southeast Conference

Christopher Goins, Southcoast Region Director

September 24, 2024

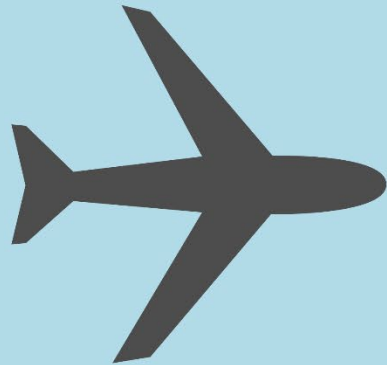
The numbers: projects by travel mode

in Southeast Alaska



39 number of AMHS ports

12 number of '24-'27 projects



27 number of airports

7 number of '24-'27 projects



612 miles of highway

40 number of '24-'27 projects

Long Range Planning

Plans – Under Development

AMHS 2045 Long Range Plan

Long Range Transportation Plan and Freight Plan

Strategic Investment Plan

Statewide Wayside Plan

Complete Streets Policy

Juneau Douglas North Crossing PEL Study

Plans – Coming Soon!

Southeast Alaska Transportation Plan

Statewide Waterways Plan

Statewide Equitable Community Connectivity Access Plan

Statewide Resiliency Plan



Ketchikan Projects 2025-2027

*Ketchikan
Peninsula Point
Sea Plane Base*



6

3

1

2

4

5

9

7

*Ketchikan
International
Airport*

Tongass Hwy

- 1 Wolfe Point Rock Slope Stabilization | 2025
- 2 Water Street Bridge Strengthening | 2025
- 3 North Tongass Hwy Resurface: Airport Ferry Terminal to Ward Creek Bridge Stage 1 & 2 | 2025
- 4 Sayles/Gorge Bridge Replacement | 2025
- 5 Tongass Ave | 2025
- 6 Ward Creek Bridge Replacement | 2026
- 7 Saxman to Surf St Pavement Rehab - S Tongass | 2026
- 8 Sea Plane Base Haulout Facility | 2026
- 9 Tongass Ave and Water Street Viaducts (Stage 1 materials) | 2027

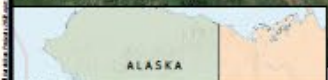
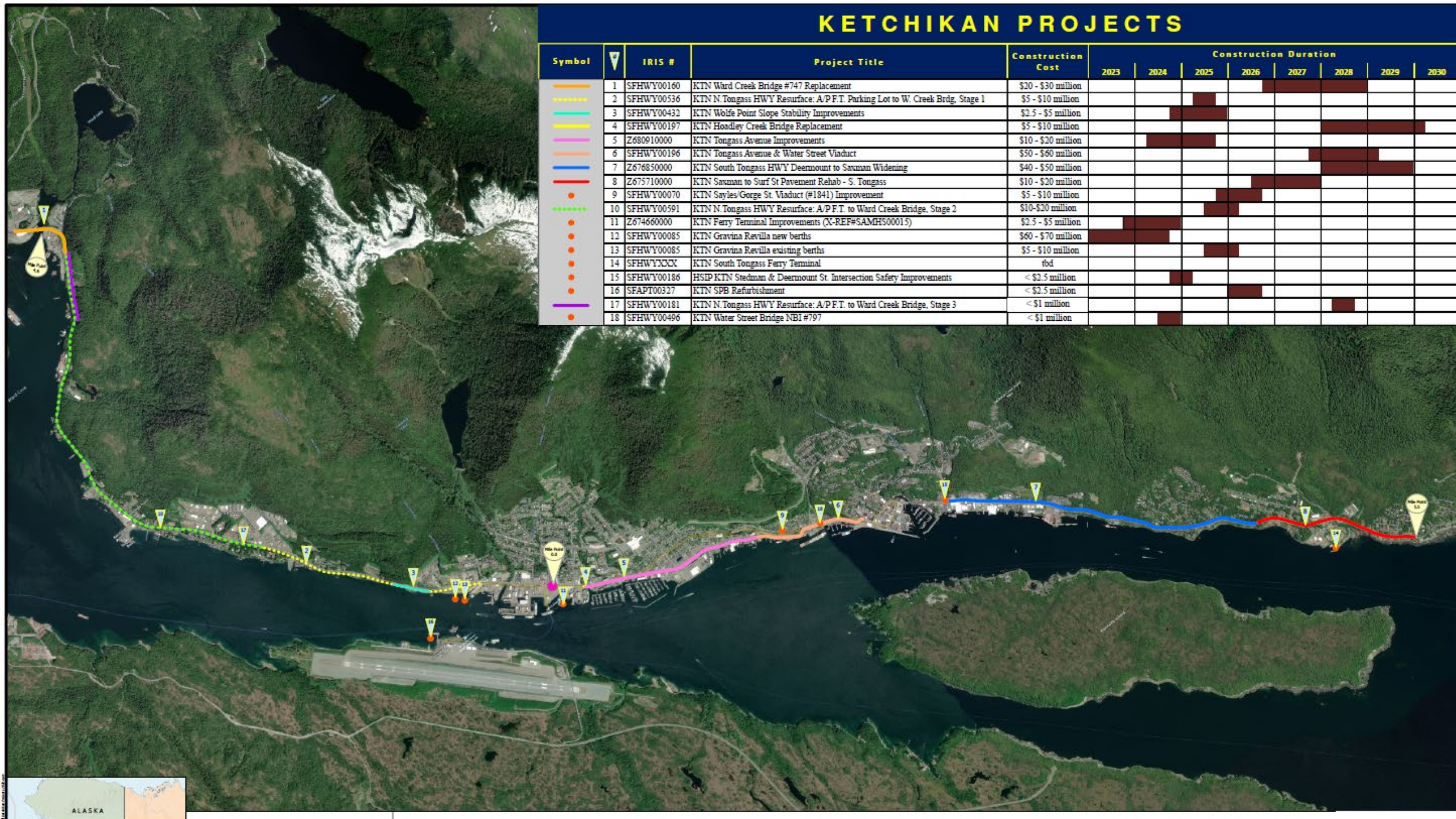
KEY

— Highway

 DOT&PF Controlled
Airport or Sea Plane Base

KETCHIKAN PROJECTS

Symbol	IRIS #	Project Title	Construction Cost	Construction Duration								
				2023	2024	2025	2026	2027	2028	2029	2030	
	1 SFHWY00160	KTN Ward Creek Bridge #747 Replacement	\$20 - \$30 million									
	2 SFHWY00536	KTN N. Tongass HWY Resurface: A/P.F.T. Parking Lot to W. Creek Brdg. Stage 1	\$5 - \$10 million									
	3 SFHWY00432	KTN Wolfe Point Slope Stability Improvements	\$2.5 - \$5 million									
	4 SFHWY00197	KTN Hoadley Creek Bridge Replacement	\$5 - \$10 million									
	5 Z680910000	KTN Tongass Avenue Improvements	\$10 - \$20 million									
	6 SFHWY00196	KTN Tongass Avenue & Water Street Viaduct	\$50 - \$60 million									
	7 Z676850000	KTN South Tongass HWY Deermount to Saxman Widening	\$40 - \$50 million									
	8 Z675710000	KTN Saxman to Surf St Pavement Rehab - S. Tongass	\$10 - \$20 million									
	9 SFHWY00070	KTN Sayles/Gorge St. Viaduct (#1841) Improvement	\$5 - \$10 million									
	10 SFHWY00591	KTN N. Tongass HWY Resurface: A/P.F.T. to Ward Creek Bridge. Stage 2	\$10-\$20 million									
	11 Z674660000	KTN Ferry Terminal Improvements (X-REF#S:AMHS00015)	\$2.5 - \$5 million									
	12 SFHWY00085	KTN Gravina Revilla new berths	\$60 - \$70 million									
	13 SFHWY00085	KTN Gravina Revilla existing berths	\$5 - \$10 million									
	14 SFHWYXXXX	KTN South Tongass Ferry Terminal	tbd									
	15 SFHWY00186	HSDP KTN Stedman & Deermount St. Intersection Safety Improvements	< \$2.5 million									
	16 SFAPT00327	KTN SPB Refurbishment	< \$2.5 million									
	17 SFHWY00181	KTN N. Tongass HWY Resurface: A/P.F.T. to Ward Creek Bridge. Stage 3	< \$1 million									
	18 SFHWY00496	KTN Water Street Bridge NBI #797	< \$1 million									



Haines & Skagway Projects 2025-2027

Haines Area Projects

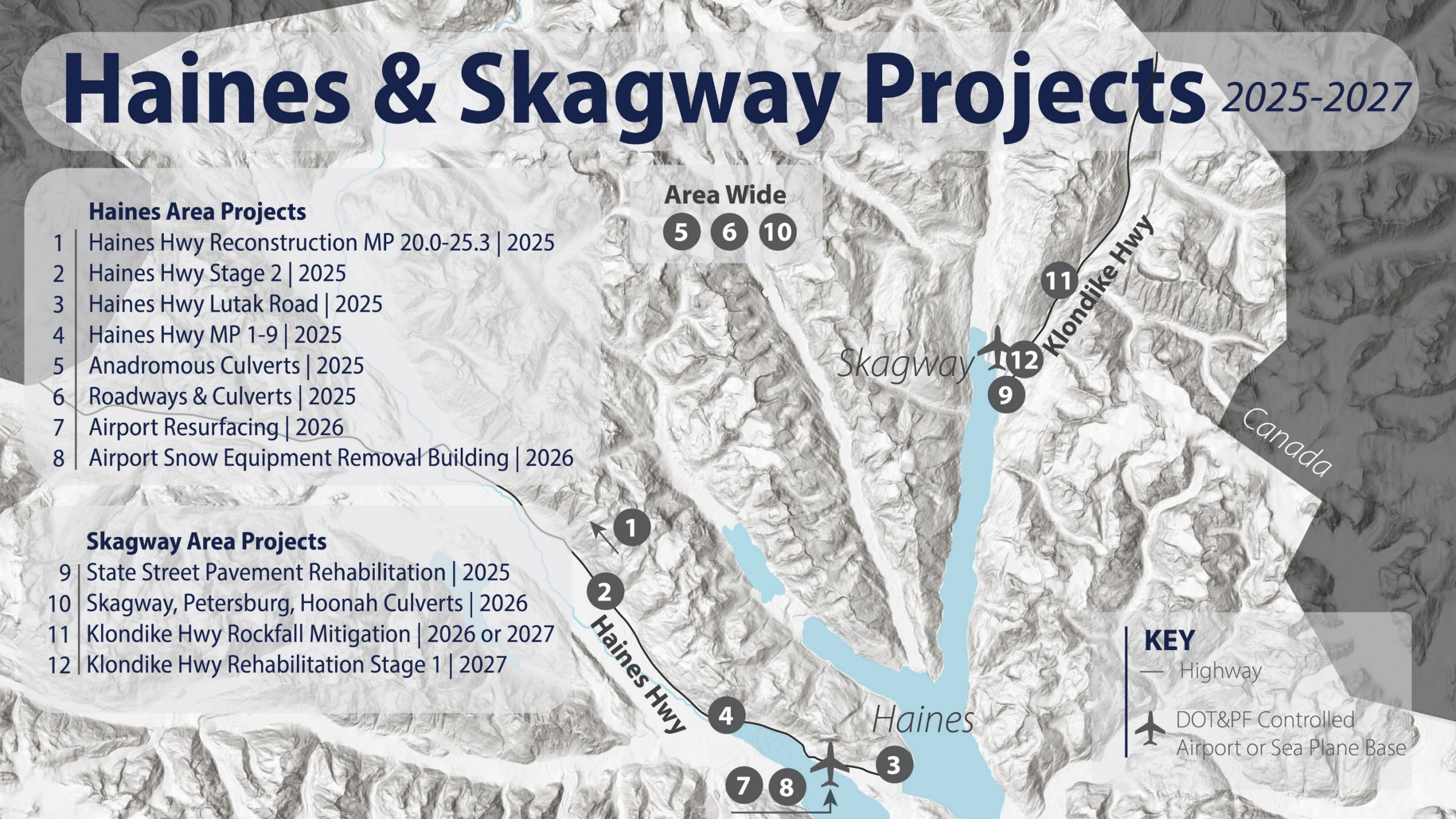
- 1 Haines Hwy Reconstruction MP 20.0-25.3 | 2025
- 2 Haines Hwy Stage 2 | 2025
- 3 Haines Hwy Lutak Road | 2025
- 4 Haines Hwy MP 1-9 | 2025
- 5 Anadromous Culverts | 2025
- 6 Roadways & Culverts | 2025
- 7 Airport Resurfacing | 2026
- 8 Airport Snow Equipment Removal Building | 2026

Skagway Area Projects

- 9 State Street Pavement Rehabilitation | 2025
- 10 Skagway, Petersburg, Hoonah Culverts | 2026
- 11 Klondike Hwy Rockfall Mitigation | 2026 or 2027
- 12 Klondike Hwy Rehabilitation Stage 1 | 2027

Area Wide

5 6 10



Juneau Projects 2025-2027

2 ↑

Glacier Hwy

9

8

3

11

7

5

1

10

6

Juneau International Airport
(Borough Controlled)

Douglas Hwy

Egan Dr

Juneau

Douglas

Thane Rd

- 1 | Jordan Creek Culvert Repair | 2025
- 2 | Bridget Cove Creek Culvert Repair | 2025
- 3 | Waydelich Creek Retaining Wall | 2025
- 4 | Roadways & Culverts | 2025
- 5 | Glacier Hwy: Industrial to Roundabout Chip Seal | 2025
- 6 | Vanderbilt Continuous Green T | 2026
- 7 | Loop Road Valley Blvd Intersection Improvements | 2026
- 8 | Resurface Glacier Hwy: Ferry Terminal to Lena | 2026
- 9 | Pt. Stephens Culvert & Drainage Improvements | 2026
- 10 | Glacier Hwy Safety Improvements Nugget to Loop Road | 2026
- 11 | Back Loop Road Resurface | 2027

Area Wide

4

Other Southeast Projects 2025-2027

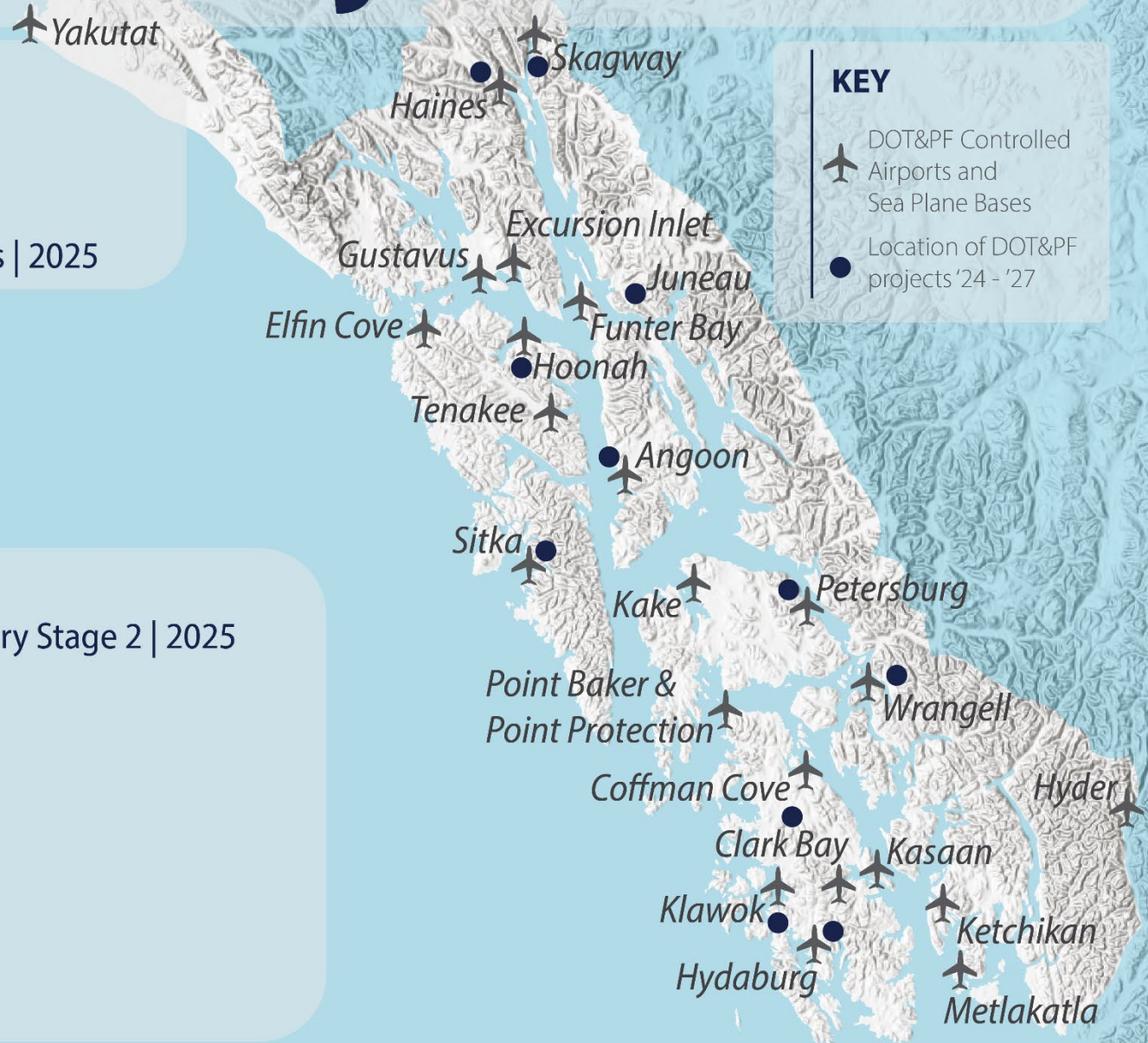
Sitka Area Projects

- Airport Terminal Building Improvements - Stage 1 | 2025
- Katlian Bay Road | 2025
- Pedestrian Seawalk | 2025
- Halibut Point Road and Peterson Intersection Safety Improvements | 2025

Petersburg Area Projects

- Petersburg Culverts | 2026
- South Mitkof Hwy Guardrail Replacement | 2026
- Areawide Chip Seal | 2026

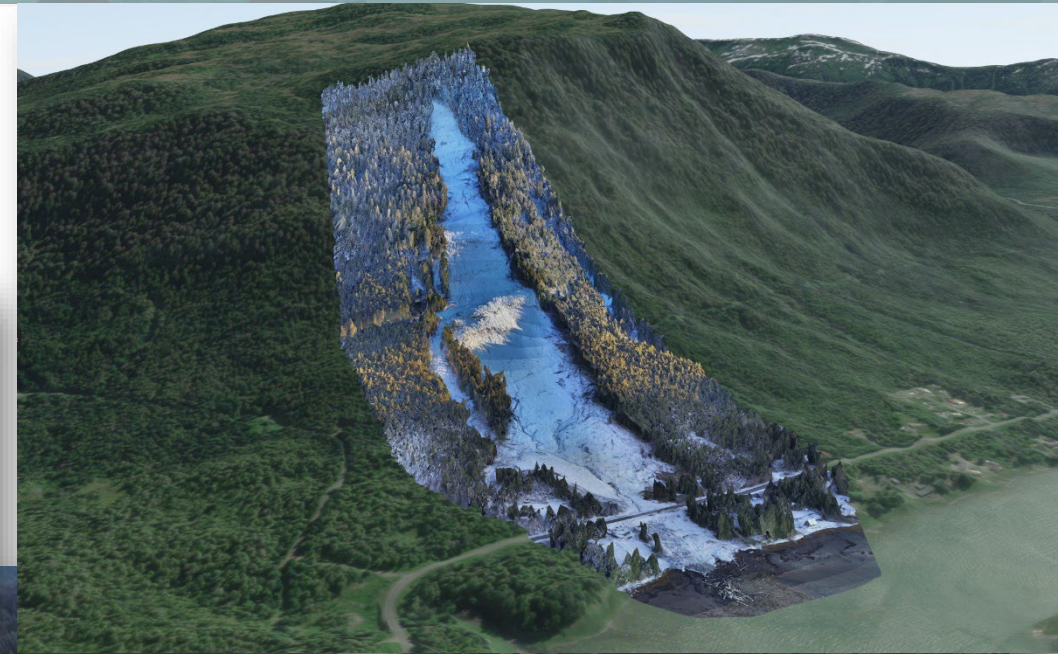
- Wrangell Airport Gates & Security Upgrades | 2025
- Hoonah Harbor Way Pedestrian Improvements & Pitt Island Cemetery Stage 2 | 2025
- Craig ADA Improvements | 2025
- Hoonah Culverts | 2026
- Region-wide Guardrail Inventory & Upgrade | 2026
- Region-wide Passing Zones Inventory & Re-striping | 2026
- Angoon Ferry Terminal Improvements | 2026
- Hydaburg Sea Plane Base Rehabilitation | 2026
- Angoon Airport | 2026
- Prince of Wales Area Rumble Strips Improvements | 2027



KEEPING COMMUNITIES CONNECTED

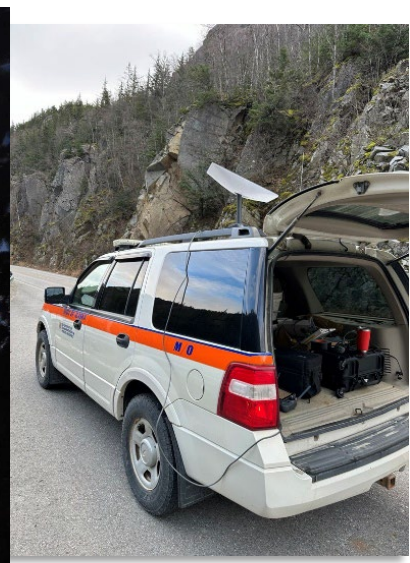
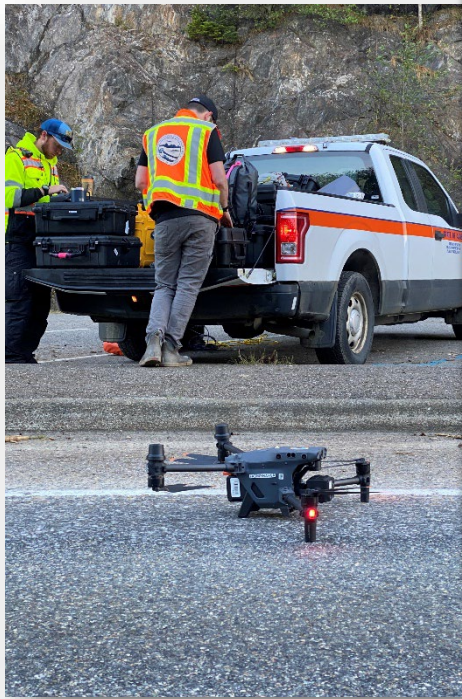
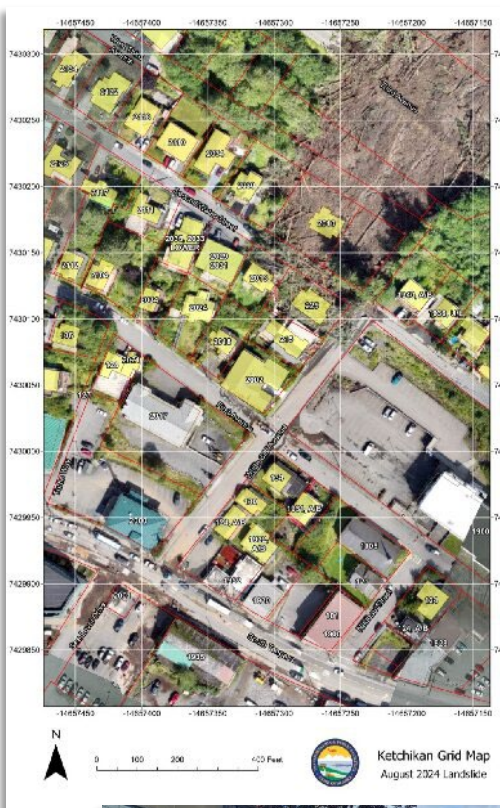
Region Supported 12 Emergency Events Over \$9M in Support

- 2023 November Wrangel Landslide
- 2023 November POW Landslides
- 2023 Haines Hwy Rockslide
- 2024 Tenakee Float Repair
- 2024 Juneau Glacier Outburst Flooding and Debris Cleanup (700 Tons)
- 2024 Haines Stream Side Erosion
- 2024 Ketchikan Landslide Support
- 2024 Gustavus Airport Law Enforcement Officer Support



KEEPING COMMUNITIES CONNECTED

Caring for Neighbors with Cutting Edge Technologies & Skills



JUNEAU
8AM
4PM
DEBRIS REMOVAL
CONTINUES





Thank you!

Christopher Goins, P.E.

Regional Director

Southcoast Region DOT&PF

6860 Glacier Hwy

Juneau, AK 99801

(907) 465-1762