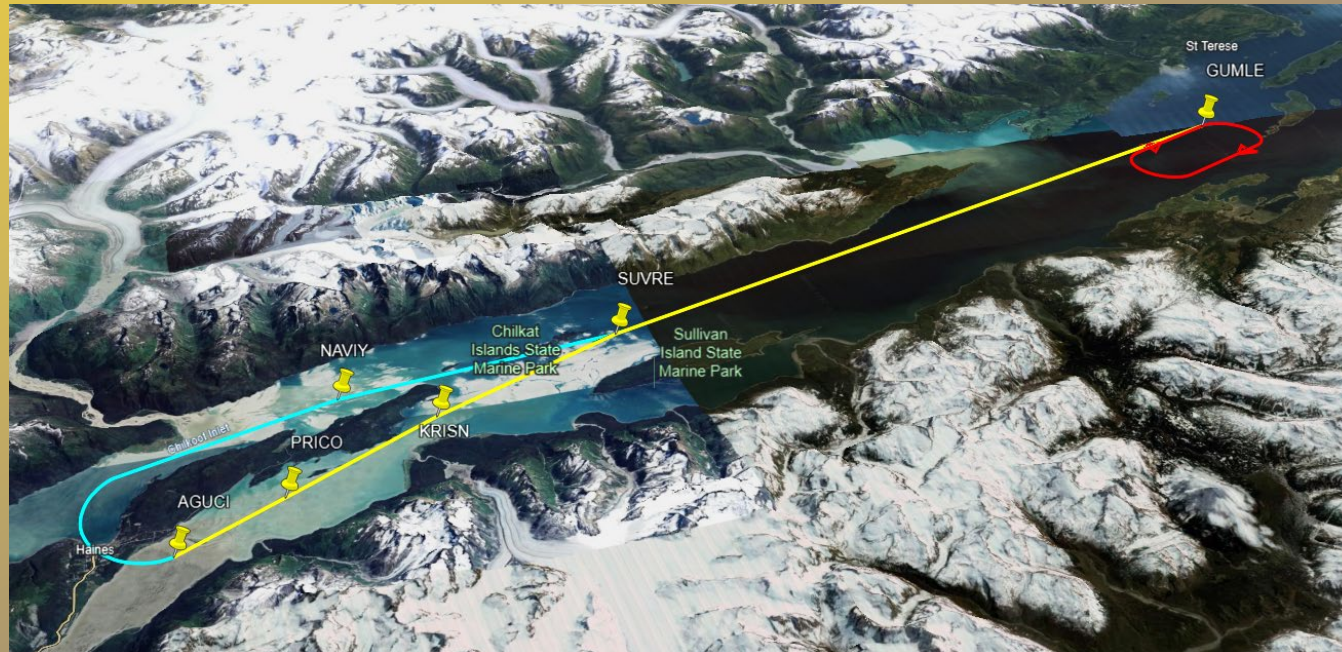


# 2024 SOUTHEAST CONFERENCE

## NAVIGATING THE CHANGING AIRWAYS

“CONNECTING THE REGION”

### NEW IFR APPROACHES





# NEW TECHNOLOGY NEW APPROACHES

Combine to increase reliability in  
marginal weather conditions

We have already seen a marked  
decrease in delays and cancellations

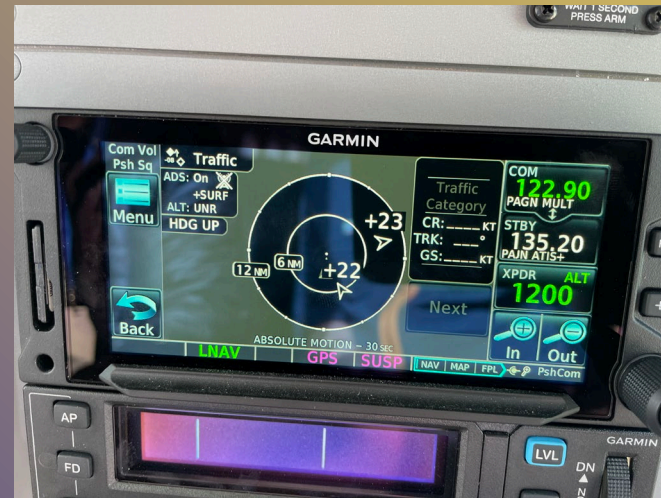
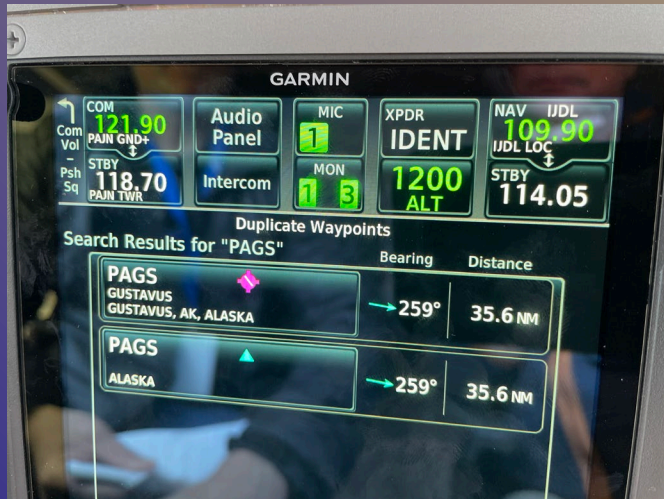


# INSTRUMENT FLIGHT RULES (IFR)



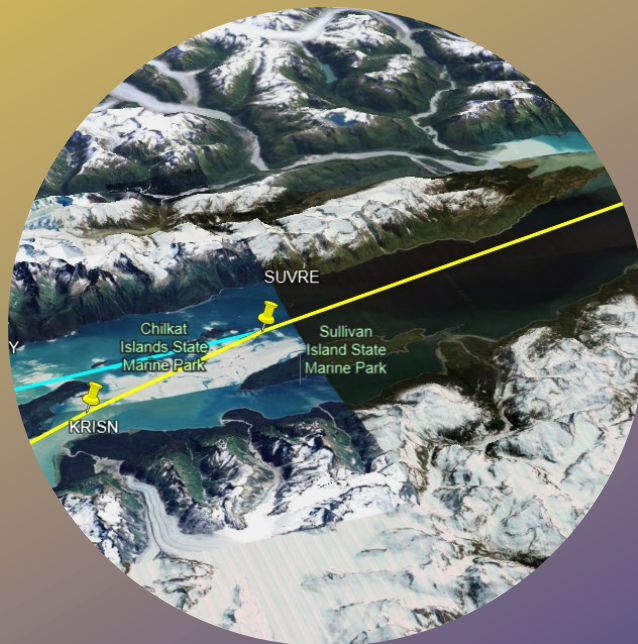
ALASKA  
SEAPLANES

# INSTRUMENT FLIGHT RULES (IFR)



# FOLLOWING THE NEW APPROACH

Simulation into Haines from Juneau  
FAA Approved Proprietary Approaches





Google Earth

Airbus, Landsat / Copernicus, Maxar Technologies

# NEW APPROACHES



Haines	940'	2.5m
Hoonah	940'	1.25m
Sitka	240'	.75m
Juneau	780'	1m
Kake	641'	1.375m
Wrangell	480'	1m
Petersburg	540'	1m



# AIRCRAFT



Pilatus PC-12

Cessna Caravan

Cessna Caravan EX



ALASKA  
SEAPLANES

# ALASKA SEAPLANES

April 1 – August 31, 2024, IFR Flight Statistics



Location	VFR Flights	IFR Flights	Total Flights	Ceiling	Visibility	Difference In Approaches	IFR Improvement
Juneau	2,160	500	2,660	19	2	21	4.20%
Haines	667	45	712	26	3	29	64.44%
Sitka	90	163	253	12	1	13	7.98%
Hoonah	621	30	651	N/A	N/A	30	100.00%
Kake	200	81	281	1	0	1	1.23%
	Total VFR	Total IFR	Total VFR/IFR			Total Difference in New Approaches	IFR Improvement
	3,738	819	4,557			73	8.91%



# THANK YOU

Carl Ramseth, General Manager

907-789-3344

[carl@flyalaskaseaplanes.com](mailto:carl@flyalaskaseaplanes.com)

[www.flyalaskaseaplanes.com](http://www.flyalaskaseaplanes.com)



ALASKA  
SEAPLANES