

ALASKA DEPARTMENT OF NATURAL RESOURCES

SOUTHEAST TIMBER UPDATE

Southeast Conference

September 18, 2013

Sitka, Alaska

Deputy Commissioner
Ed Fogels
Alaska Department of Natural
Resources



NORTHERN SOUTHEAST

- “ Haines State Forest
(286,000 acres)

- “ Annual allowable cut 4.8
MMBF (million board feet)

- “ 15 – 20 small sales per year
 - Approximately 1 MMBF
sold/year
 - 8 – 10 small operators

- “ Small mills for lumber,
house log construction,
commercial firewood



SOUTHERN SOUTHEAST

- “ Southeast State Forest (48,472 acres)
- “ Annual allowable cut 12.2 MMBF (million board feet)
- “ 2-3 medium size timber sales /year
 - Approximately 8-10 MMBF/year
 - One medium sized mill remaining
- “ 3-5 small sales/year
 - Approximately 1 MMBF/year
 - 8-10 small operators



TOTAL TIMBER VOLUME SOLD IN SOUTHEAST FROM 2001 TO 2012

” 133.0 MMBF

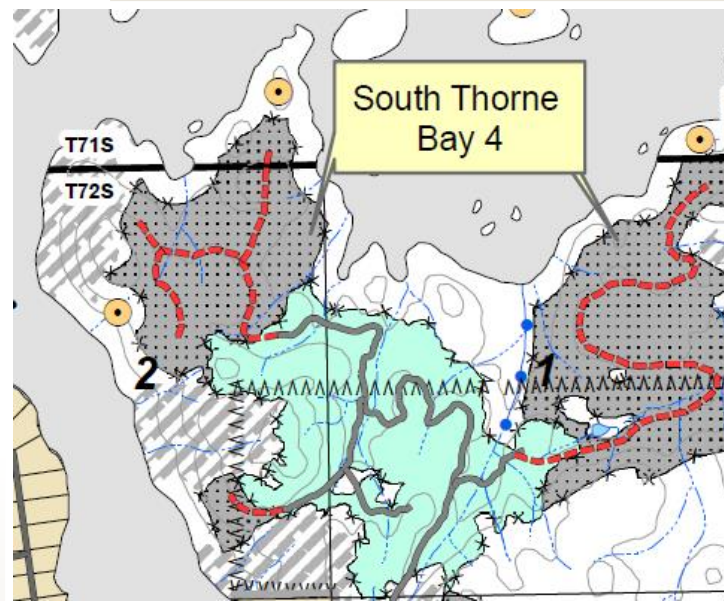
” 4,660 acres

” \$5,485,420



TOTAL TIMBER VOLUME SOLD IN SOUTHEAST IN 2013 TO DATE

- “ 6.0 MMBF
- “ 150 acres
- “ \$1,200,000
- “ South Thorne Bay #4 Sale (4 MMBF) to be offered this fall, along with 3 to 4 small sales



Legend

- Proposed Harvest
- Active Harvest
- Previously Harvested
- Lakes
- Subdivisions
- Southeast State Forest
- Property Line
- Existing Road
- Closed Road
- Proposed Road
- Catologed Anadromous Stream
- Streams
- Eagle Nests

ONGOING HARVESTING FROM SALES PRIOR TO 2013

“ Eastern Passage sale in Wrangell

- 3.0 MMBF sale is completed
- About 20-30 MBF left to scale

“ South Thorne Bay #3

- 4.5 MMBF total
- 2.5 MMBF remaining to be harvested

“ Zarembo Island sale

- 4.0 MMBF total
- Harvesting has started this year

FIVE YEAR SCHEDULE

2013-2017

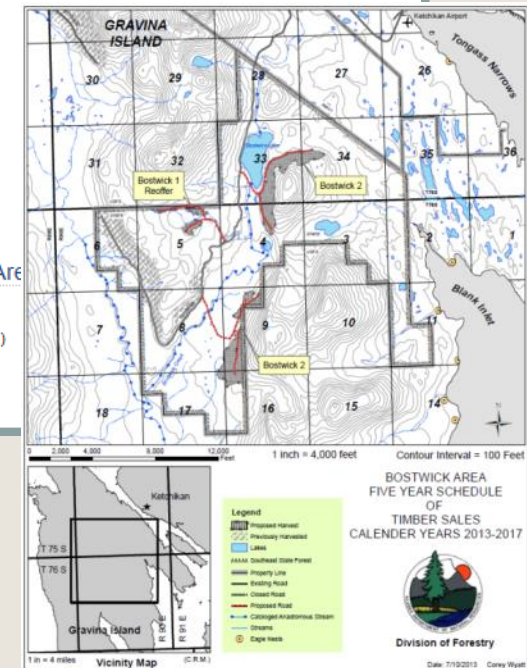
“ Southern Southeast schedule just completed public review.

“ Intent is to offer economic timber that meets industry’s needs, while maximizing annual allowable cut.

Five Year Schedule of Timber Sales

Maps may display incorrectly if not viewed with Adobe 6.0 or later
Get the most current version of [Adobe Acrobat Reader](#).

- [2013-2017 Preliminary Five Year Schedule of Timber Sales](#) (PDF)
- [Individual Maps](#) (Approximately 400 KB each)
 - [Bostwick Area](#) (PDF)
 - [Coffman Cove Area](#) (PDF)
 - [Earl West Area](#) (PDF)
 - [Heceta Island Area](#) (PDF)
 - [Kitkun Bay Area](#) (PDF)
 - [Kosciusko Island Area](#) (PDF)
 - [Leask Cove Area](#) (PDF)
 - [Little Coal Bay Area](#) (PDF)
 - [Naukati Area](#) (PDF)
 - [North Hollis Area](#) (PDF)
 - [North Thorne Beach Road Area](#) (PDF)
 - [Port Delores Area](#) (PDF)
 - [South Thorne Bay Area](#) (PDF)
 - [Thomas Bay Area](#) (PDF)
 - [Vallenar Area](#) (PDF)



ROAD CONSTRUCTION PLANS

- “ DOF received \$2m capital appropriation for new timber roads in Southeast State Forest and \$4.5 m from DOT for Gravina Island roads.
- “ Edna Bay to Kosiusko Island--build approximately 4 miles of new road and construct an LTF site. This will access over 20 MMBF of state timber and will also be used by adjacent landowners such as the USFS, University of Alaska, and Mental Health trust

ROAD CONSTRUCTION PLANS

“ Gravina Island – reconstruct approximately 5 miles of the Bostwick logging road and build 2 miles of new road, to complete the Bostwick #1 and #2 sales, for approximately 7 MMBF.

ROAD CONSTRUCTION PLANS

” Gravina Island – Construct a logging road to Vallenar Bay on Gravina Island to access State timber and University of Alaska lands. This will be approximately 5 miles of new road construction for approximately 12 MMBF. We will need to enter into an MOU with the Ketchikan Gateway Borough for the use of their Lewis Reef LTF on Gravina. That process is under way.

STATE TONGASS TEAM

Purpose:

Provide a forum for state agencies to review, discuss, and consolidate comments regarding development projects proposed in the Tongass National Forest.



“ Recent timber projects reviewed

- Tonka (PRD)
 - 38.5 MMBF (sawlog and utility)
 - Estimated 154-183 direct annualized jobs

- Big Thorne (TBRD)
 - 116.3 MMBF old-growth sawlog
 - 15 MMB young-growth sawlog
 - Estimated 600-689 direct annualized jobs

- Saddle Lakes (KMRD)
 - DEIS in preparation
 - 33 MMBF anticipated

- Wrangell Island (WRD)
 - DEIS in preparation
 - 80 MMBF anticipated



STATE TONGASS TEAM

Purpose:

Provide a forum for state agencies to review, discuss, and consolidate comments regarding development projects proposed in the Tongass National Forest.



“ Recent restoration projects reviewed

- Twelvemile Creek Phase-II (CRD)
 - 0.5 miles of stream habitat improvements
- Luck Creek (TBRD)
 - 2.5 miles of stream habitat improvements
- Silviculture/Wildlife Thinning
 - Hoonah; 6,925 acres
 - Juneau; 1,556 acres
 - Ketchikan; 8,066 acres
 - Prince of Wales; 11,543 acres



Forest Plan 5-year review

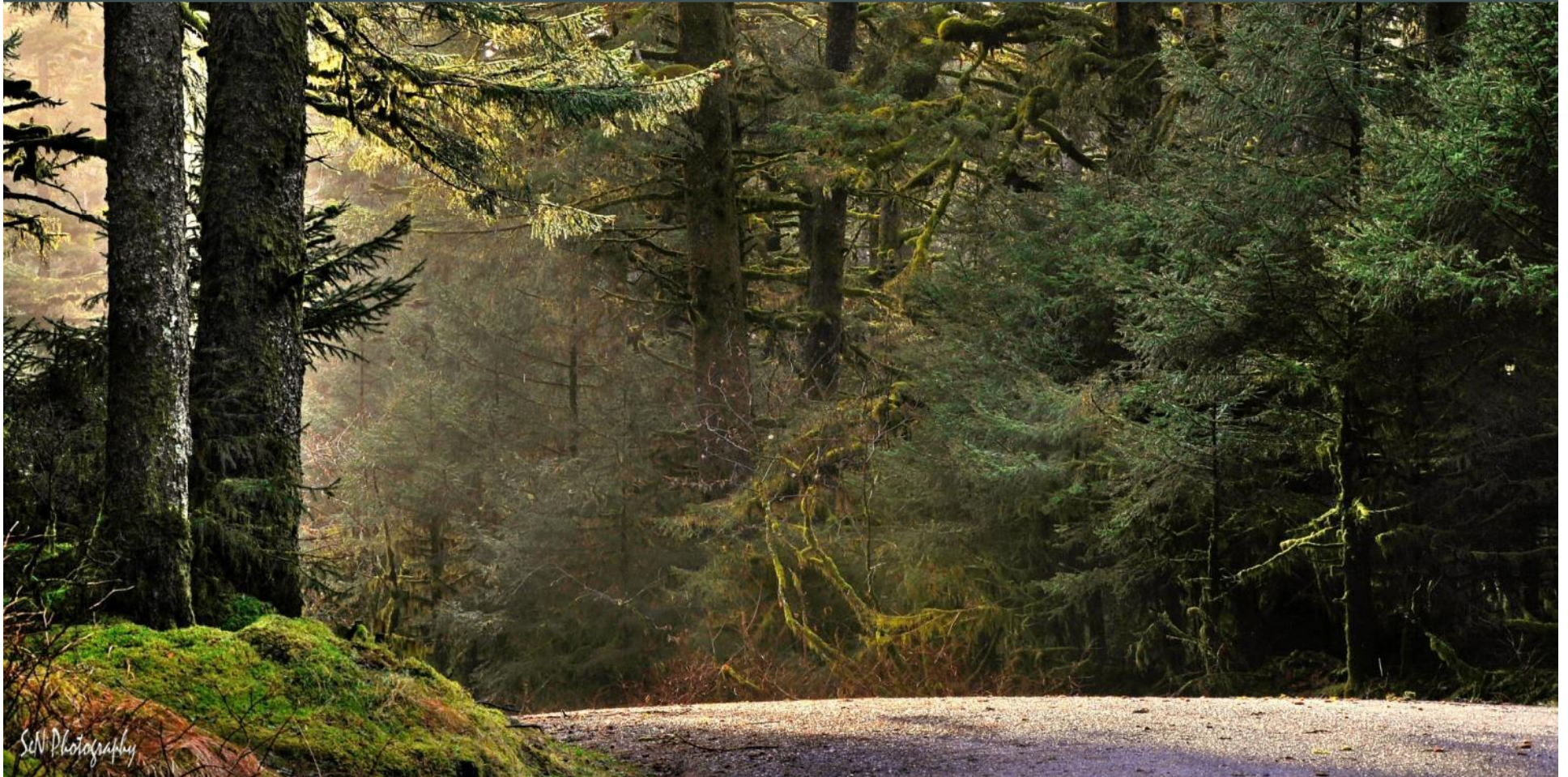
The State submitted comments and recommendations to the U.S. Forest Service related to the Tongass Forest Plan. Topics included:

- “ 2001 Roadless Areas Conservation Rule and transportation needs
- “ Timber, geological, and renewable energy resources
- “ Social and economic considerations and multiple uses of the forest

GOVERNOR'S TIMBER TASK FORCE

- “ AO 258 – Report finalized in June 2012
- “ Request for 2 million acres from Tongass to Southeast State Forest

THANK YOU!



Sen Photography