

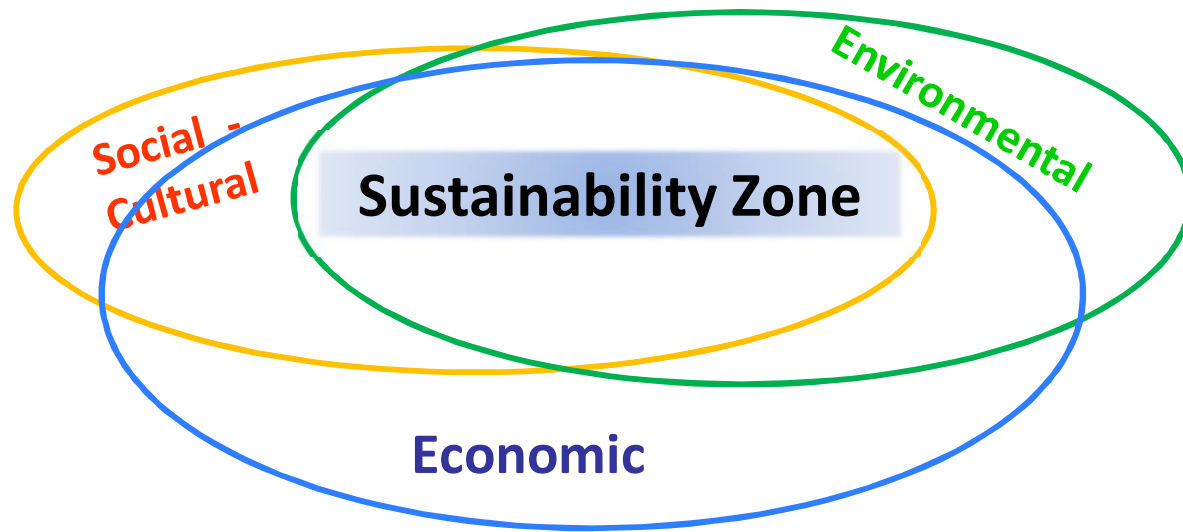
**Finding a  
Sustainable Management Strategy  
for the  
Tongass National Forest  
  
Opportunities and Challenges**



Prepared by D.R. Systems NW Inc.  
For the SouthEast Conference

# **Defining Sustainability**

## Successful Achievement of Sustainable Forest Land Management Objectives

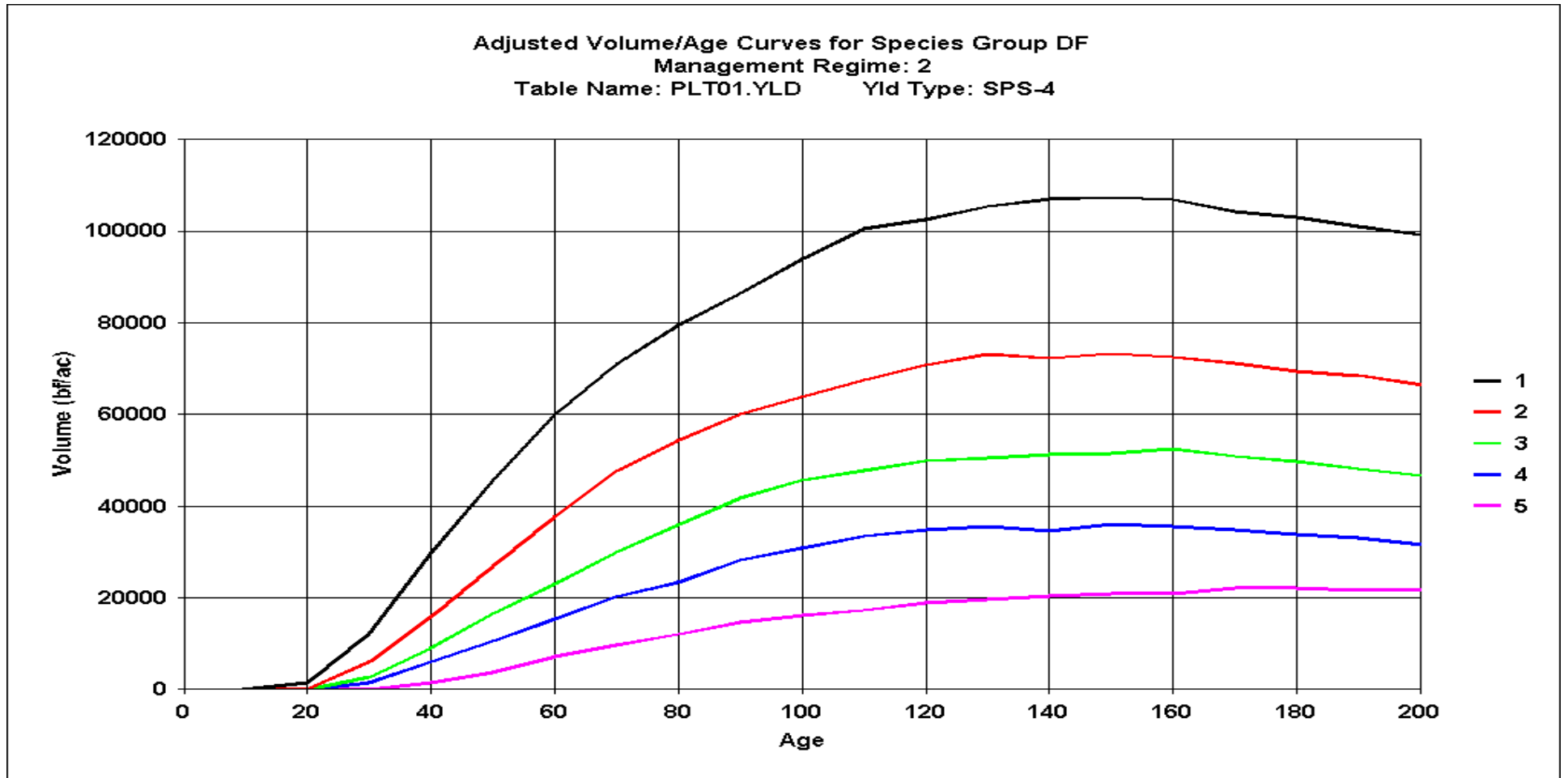


Over time, every acre of forest land can contribute to all three factors – meaning truly sustainable solutions can allow for much more use of a landbase over time + use the Satoyama Principle



**Some of the  
Factors Important in  
Sustainability Analyses**

# Variations in Site Productivity over Time by Productivity Class

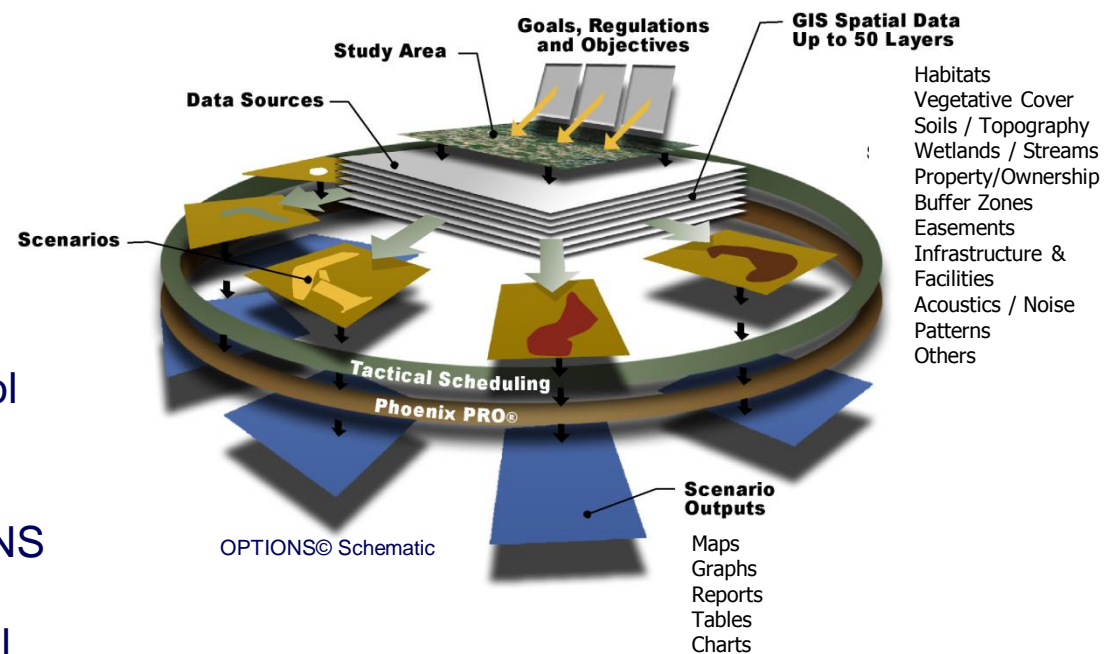


# Scenario-based Spatial Analysis

---

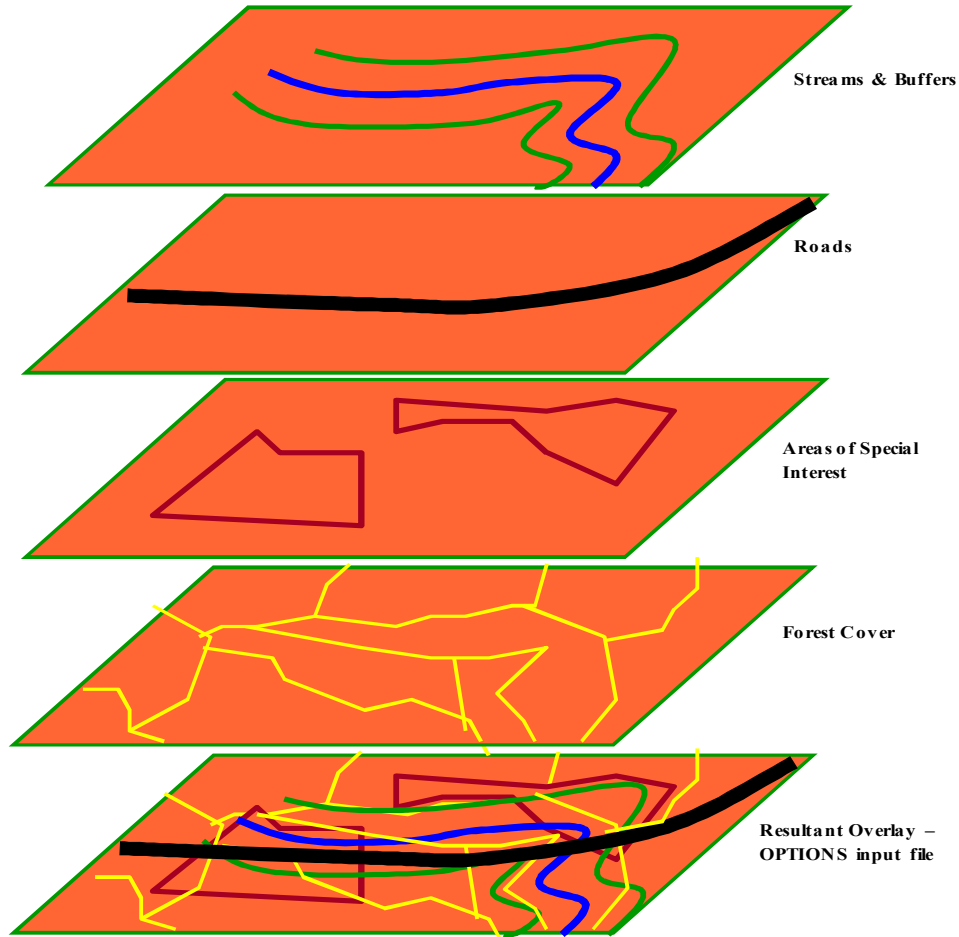
“ DR Systems Inc., has spent 25 years helping forestry and other natural resource managers achieve and exceed improved landbase management and resource contribution requirements.

“ OPTIONS© is a scenario-based landuse planning and analysis tool which utilizes resource and landscape data on a site-specific, individual polygon basis. OPTIONS is designed to address all environmental and social . cultural requirements first, before any consumptive use or extraction of resources is allowed within the modeling framework.



# OPTIONS - Dynamic GIS Links

---



# **Development of Alternative Management Strategies**

# **Basis of an Alternative Management Strategy**

---

**Design and Adopt a Triple-Bottom-Line  
Solution**

**Utilize landscape dynamics – every  
acre can do a number of things over  
time**

**Utilize the Satoyama Concept**

# **Components of Alternative Management Strategies**

---

“Use spatial, scenario-based planning techniques

“Present results which show where and when an activity or category of activity is forecast to occur

“Pay close attention to the details

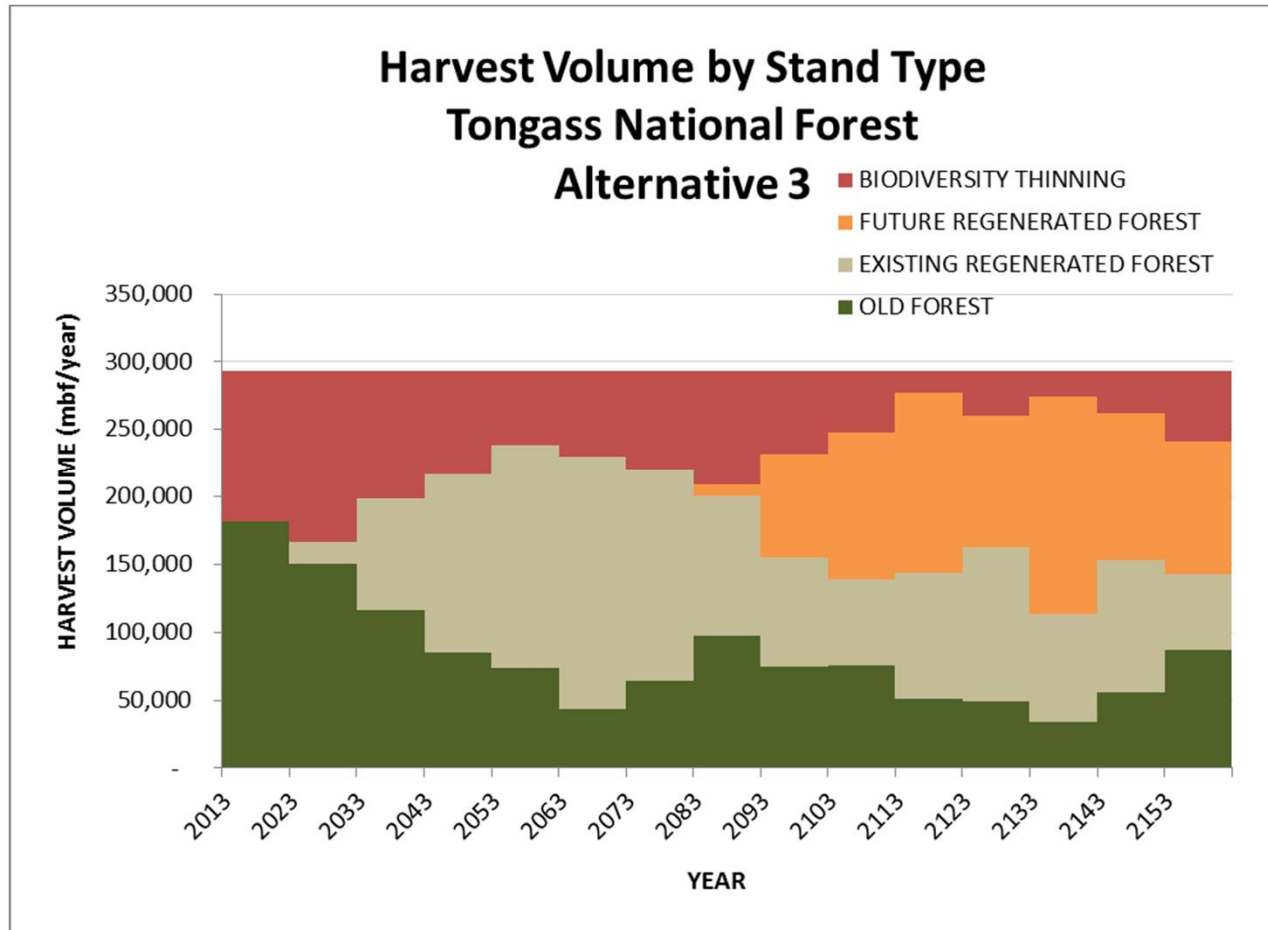
“Look at a range of alternative strategies . similar to what was done in 1989

# Implications on management Strategies

---

- “ Habitats are based on a range of stand structure components, not just age
- “ Can move habitats around over time – ie grow new habitat
- “ Spread activities over a larger proportion of the landbase – lighter footprint across the landscape
- “ Restoration/rehab become part of forest mgmt strategies

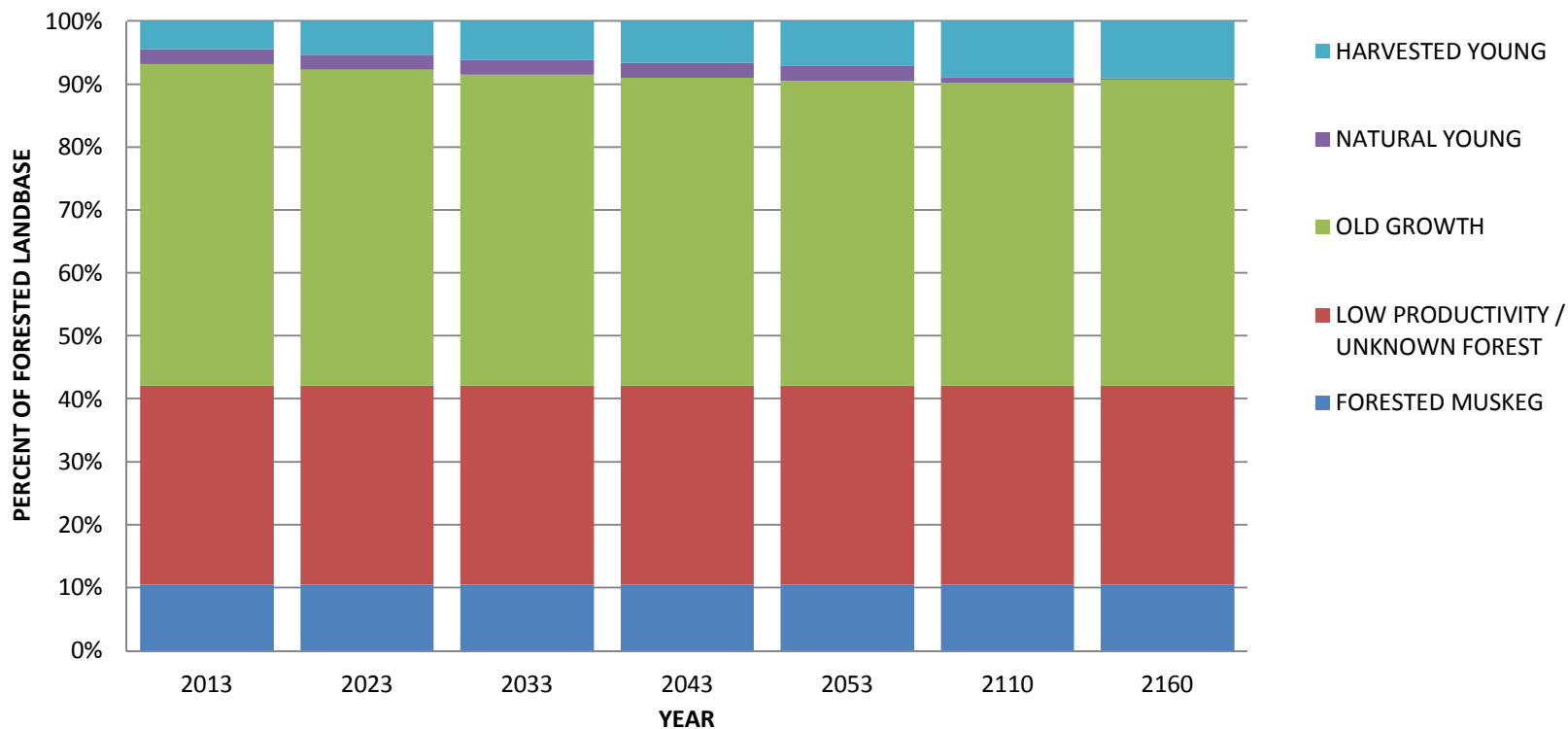
Figure 5. Alternative #3 projected harvest volumes by stand type for a 300-year planning horizon.



# Distribution of Habitat and Timber Types Over Time

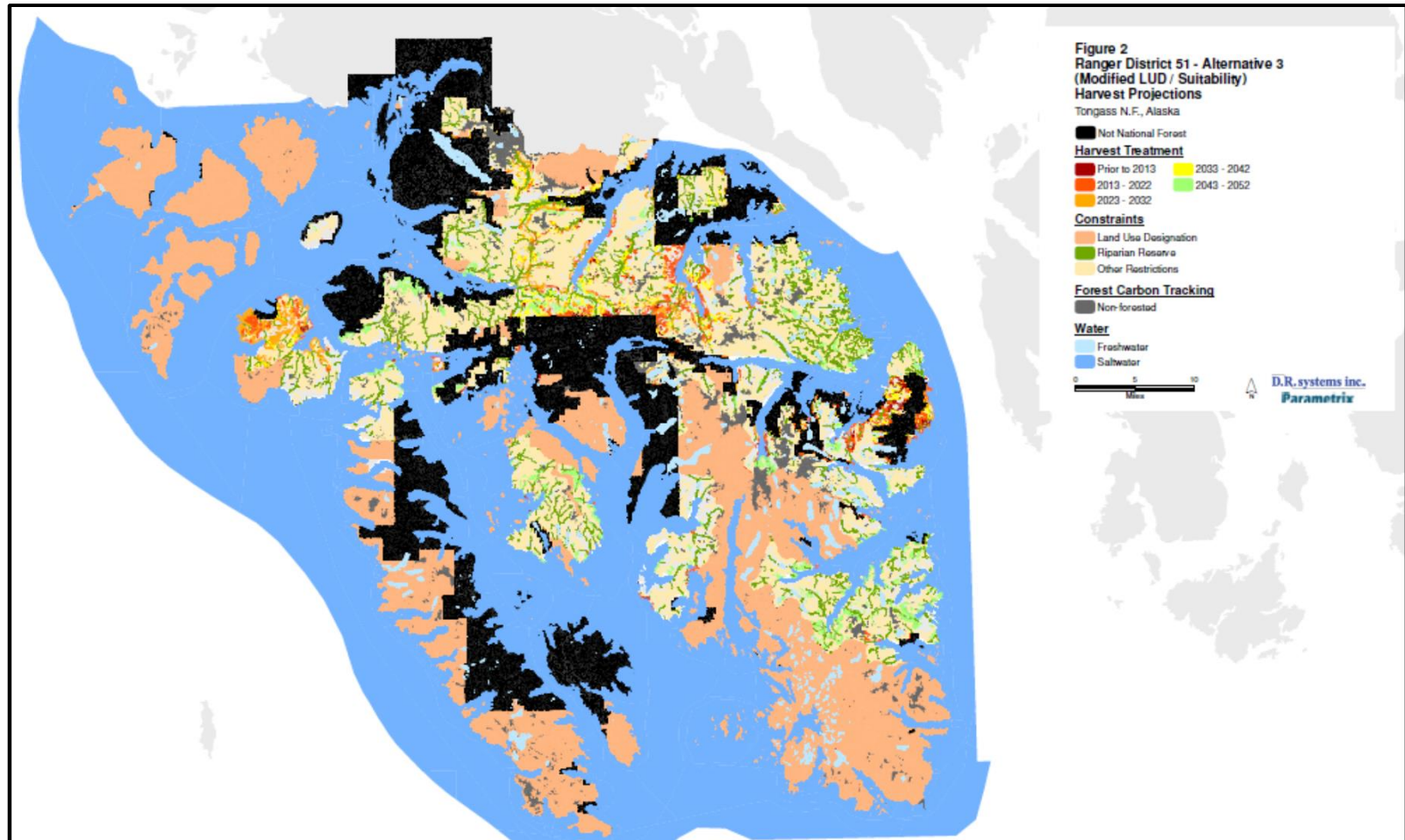
## Alternative #3

Habitat Area Distribution  
Tongass National Forest  
Alternative 3

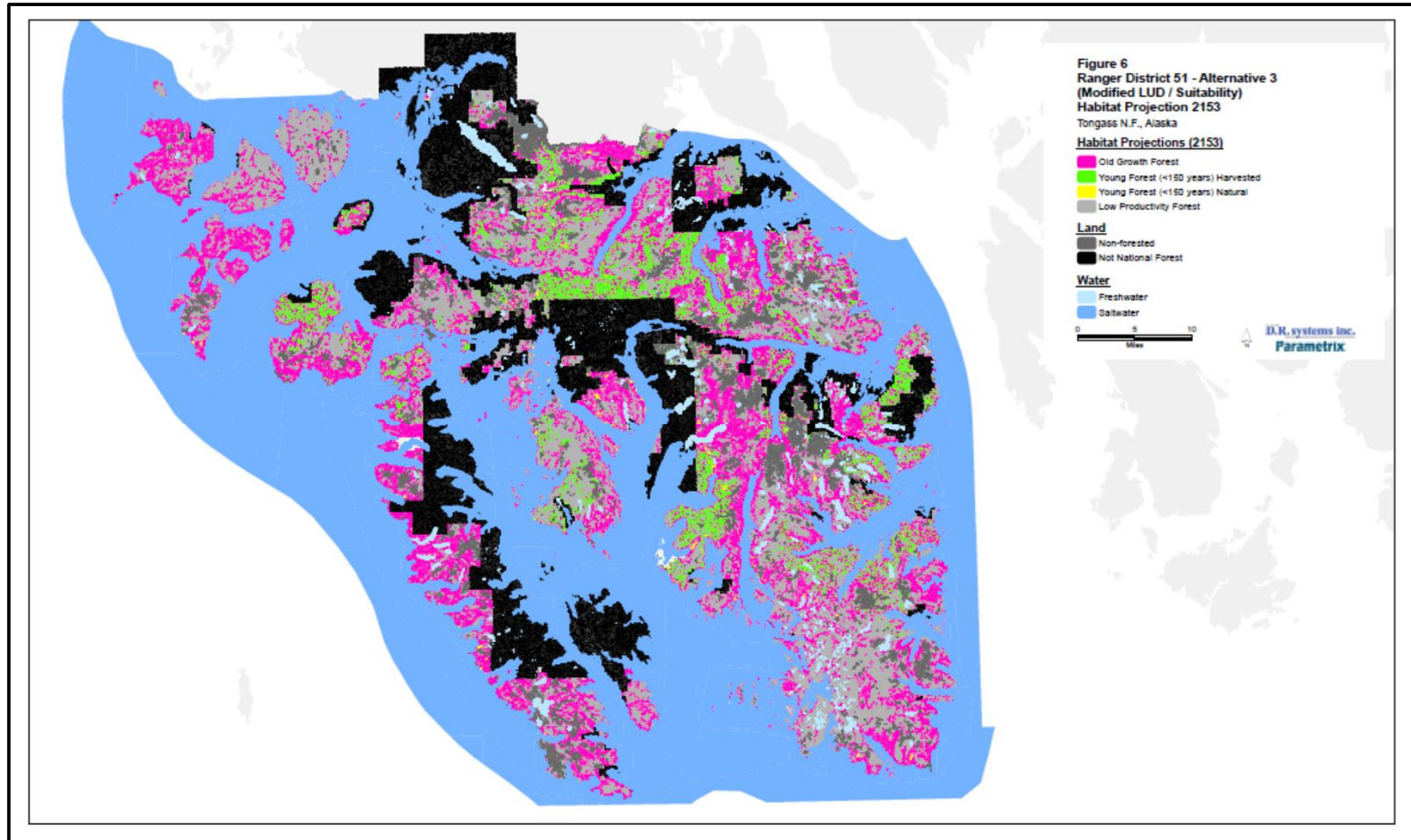


# Craig RD - Alternative 3

## Model-forecast Harvests to 2052

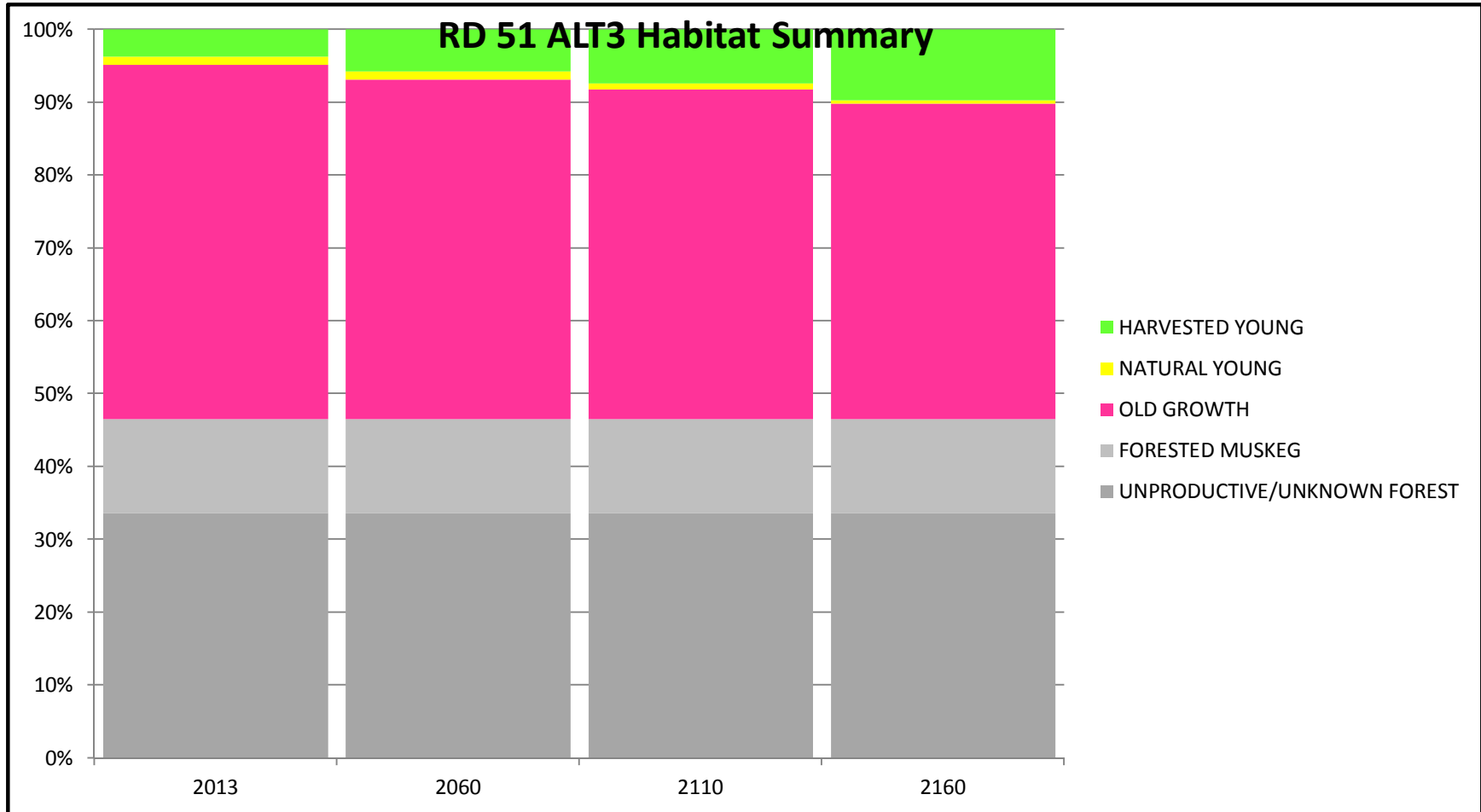


# Craig RD - Alternative 3 Habitat Projection at Year 2153



# Craig RD - Alternative 3

## Distribution of Habitat/Timber Types



# What Would an Increased Timber Harvest Mean for SE Alaska?

- “ Increased number of full-time wealth creating jobs
- “ Increased tax revenues for governments
- “ Enables the Tongass to achieve much of its “habitat and rehab” goals as part of improved timber mgmt – eliminating much of the Tongass cash drain.

# What are some of the advantages of this management strategy?

- “ Maintains 90+% of the existing Tongass Old Growth forested land base in Old Growth characteristics.
- “ Maintains view sheds
- “ Maintains riparian zones for streams
- “ Increased deer carrying capacity – better year-round forage and stable winter range

mp3

Thank You

## Slide 19

---

**mp3**

I think now you should put what is right now the first slide here. But add the detail about when the HCP was completed, the area involved, and the role of DRS.

mperdue, 2/18/2011







