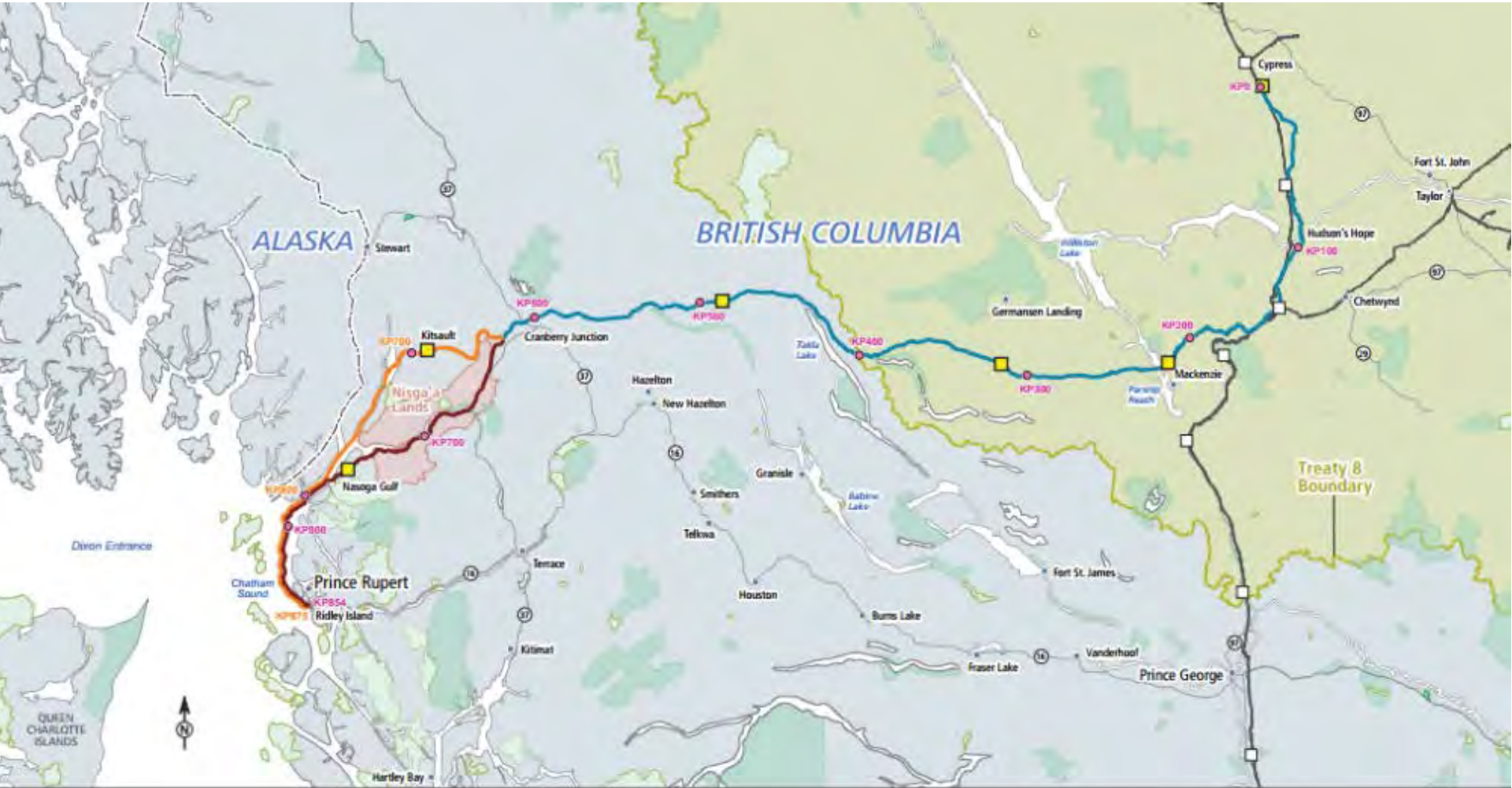


# Prince Rupert LNG - 2015



# Prince Rupert LNG - 2015



Legend	
	Kilometer Post (KP)
	Proposed Compressor Station
	Spectra Energy Compressor Station
	Nisga'a Lands
	Provincial Parks
	Protected Areas
	Primary Route
	Kitsault Route
	Nasoga Gulf Route
	Existing Spectra Energy Pipelines

## Westcoast Connector Gas Transmission™ Project Proposed Overview Map

Date	January 9, 2014	Projection	BC Albers
Scale	1: 2,000,000	Datum	NAD 1983
Prepared By	Spectra Energy		

# We asked. This is what you said.

## What's most important to you?



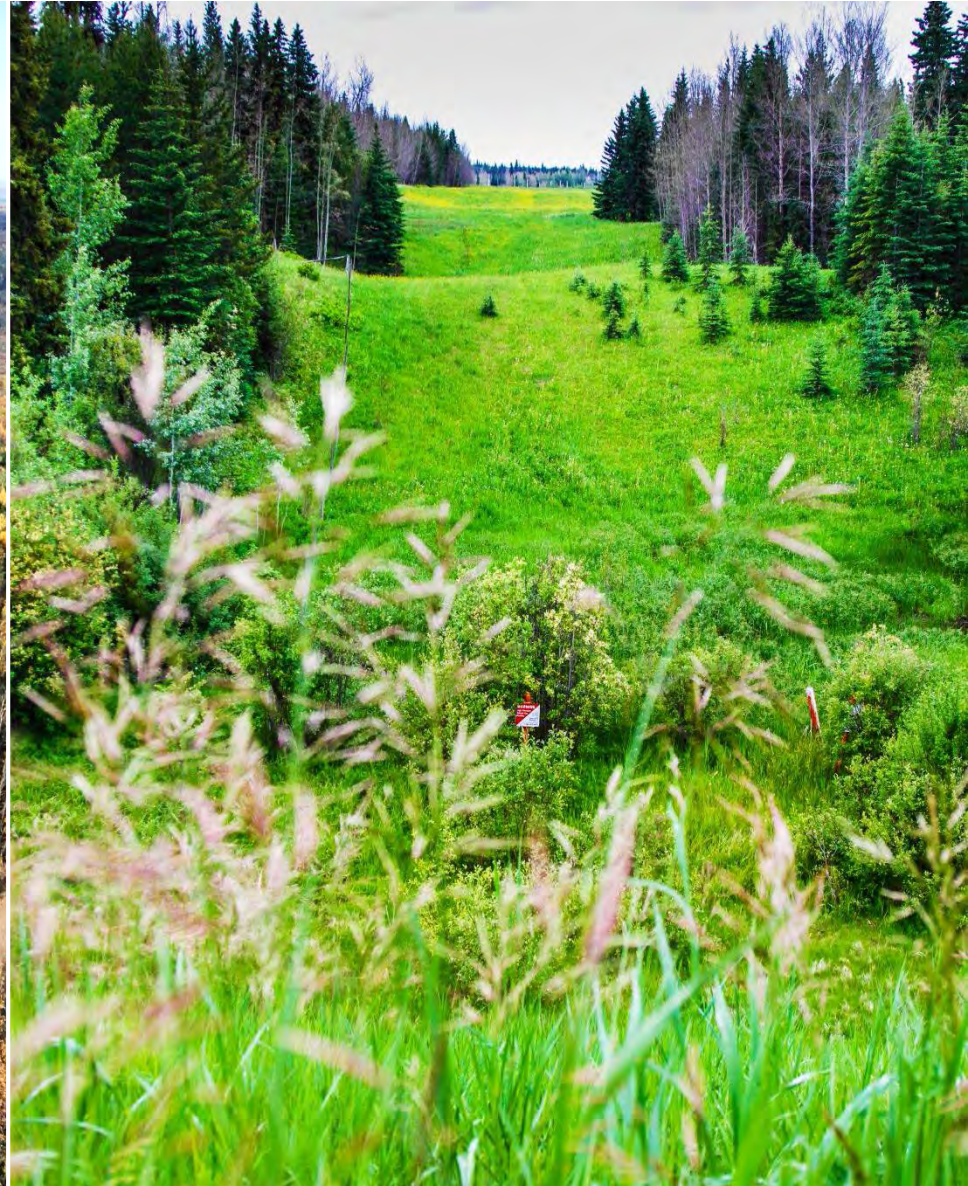
# Protecting the environment



# Protecting the environment



# Protecting the environment



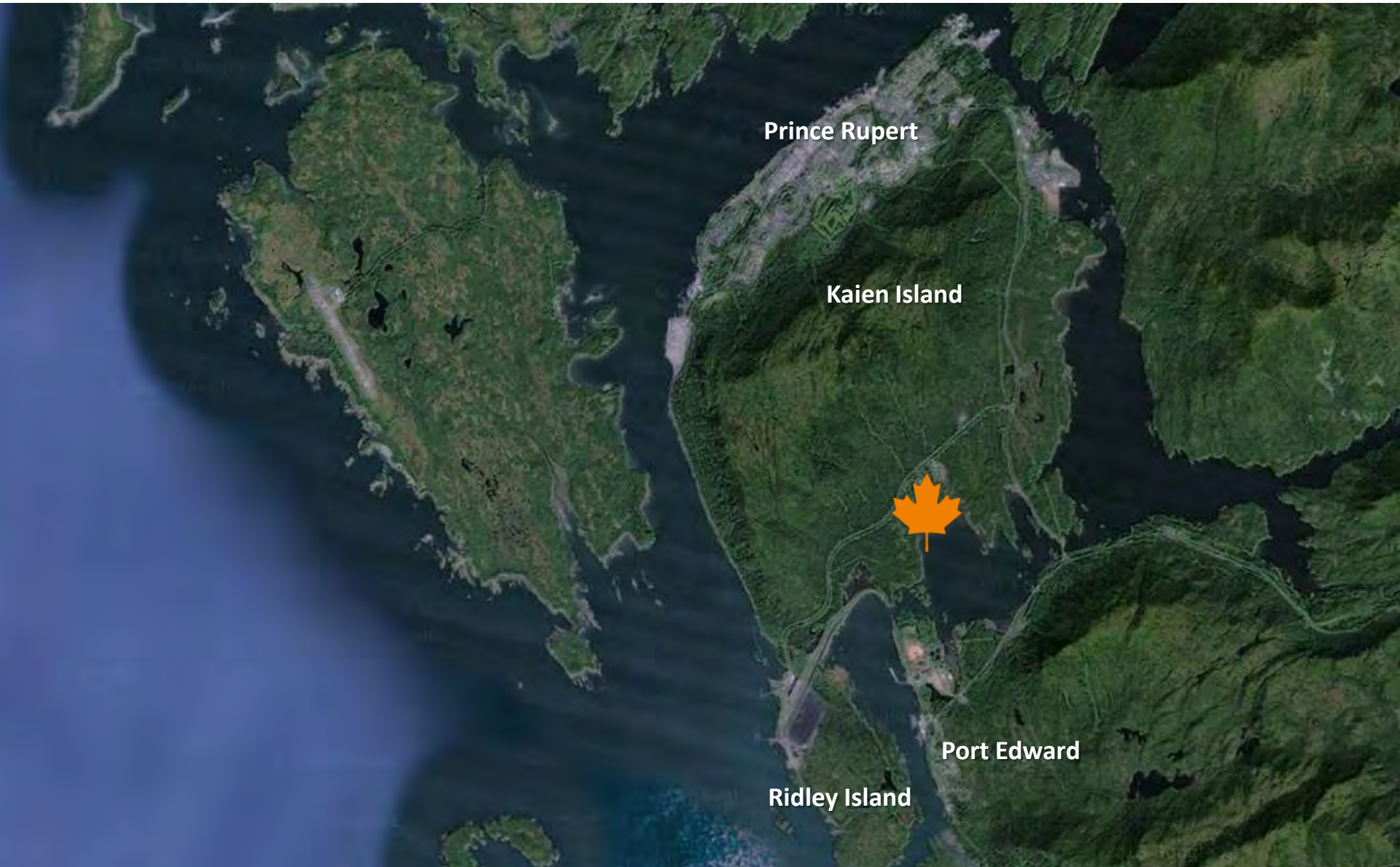
# Family and community safety



# Family and community safety



# Family and community safety



# Family and community safety

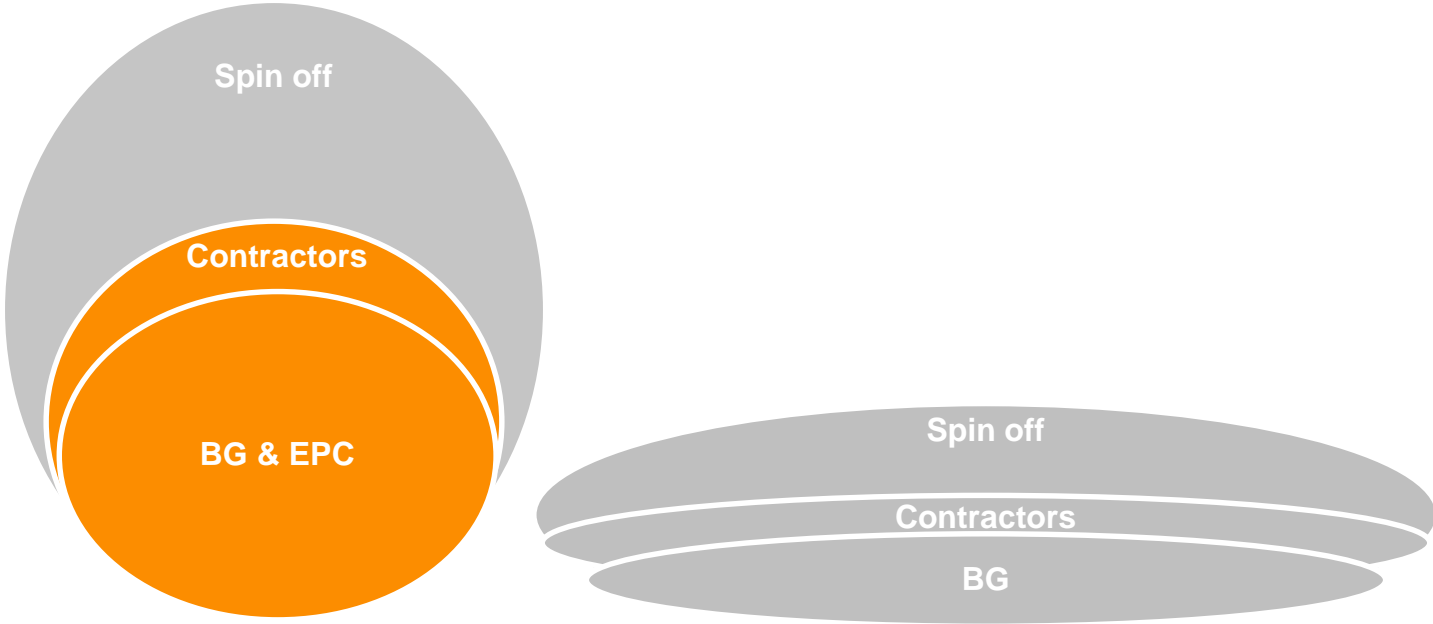


*“Sometimes hearing the message from a different perspective... can mean that people will listen in a different way.”*

– **Treena Decker**,  
Stopping the Violence  
Counsellor at  
North Coast Transition Society.



# Local jobs - construction

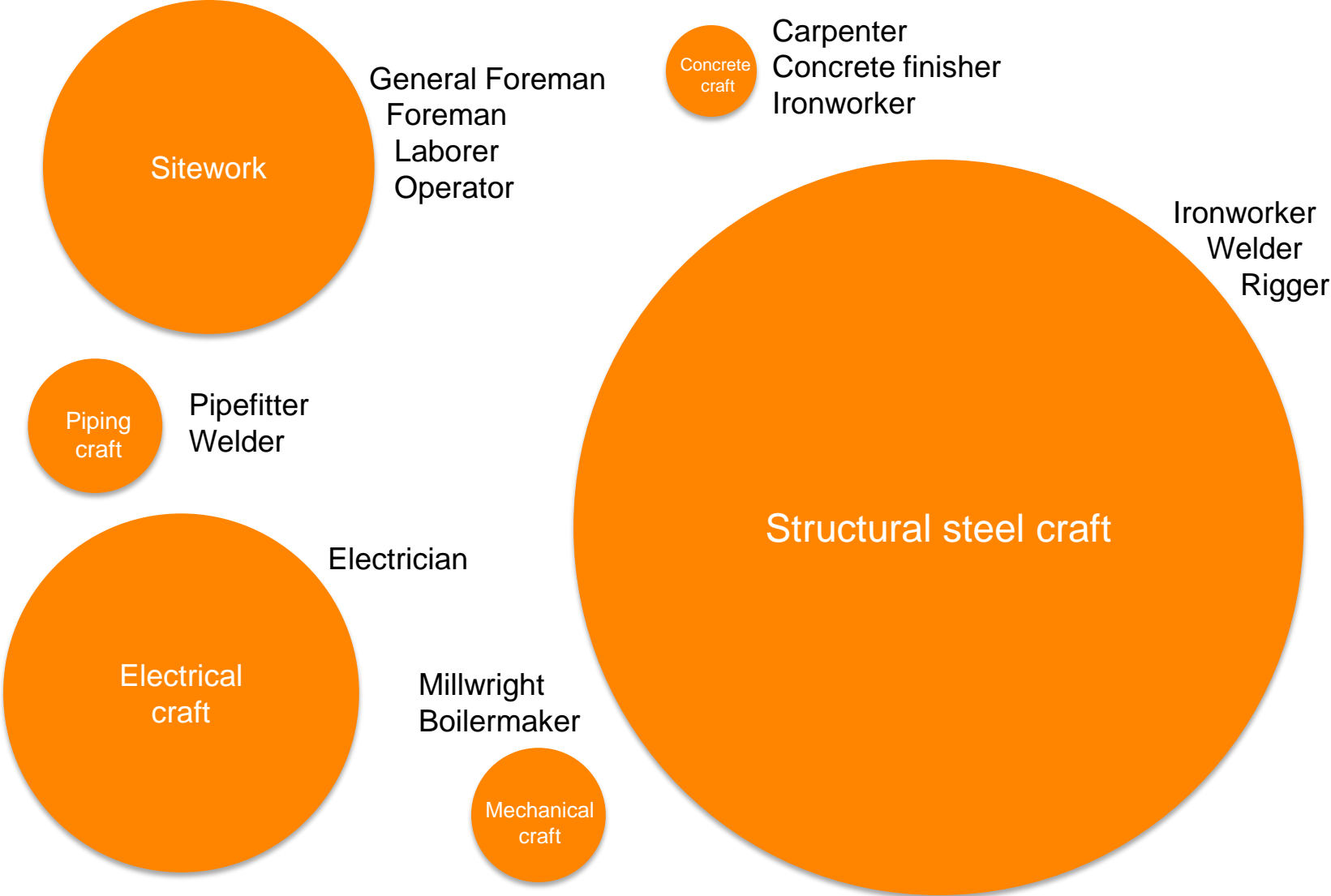


FID

Construction  
Peak direct  
workforce 3.5K

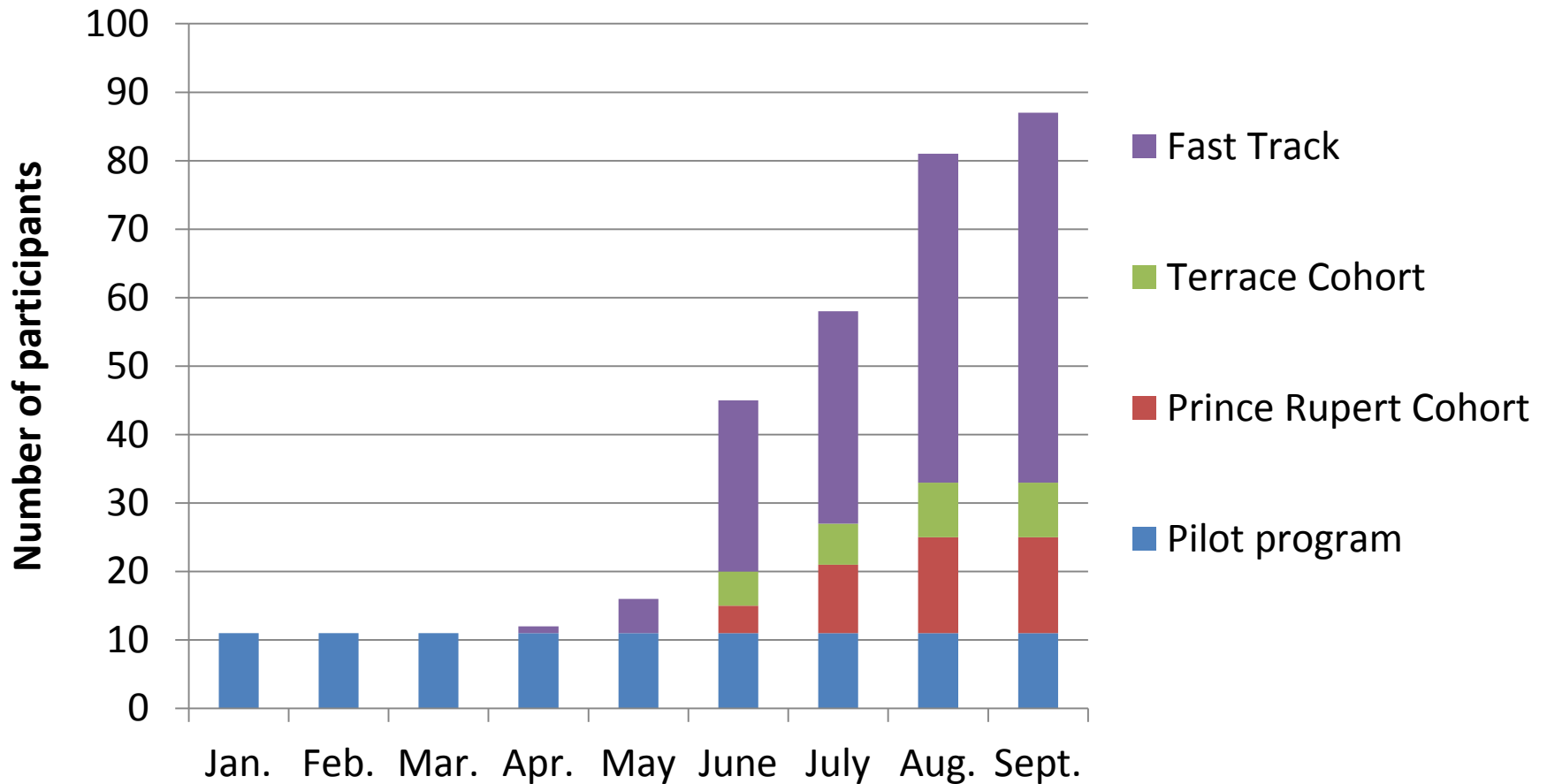
Operations  
Direct workforce 250 -300  
Direct contracts 150- 200

# Local jobs - construction workforce



# Local jobs

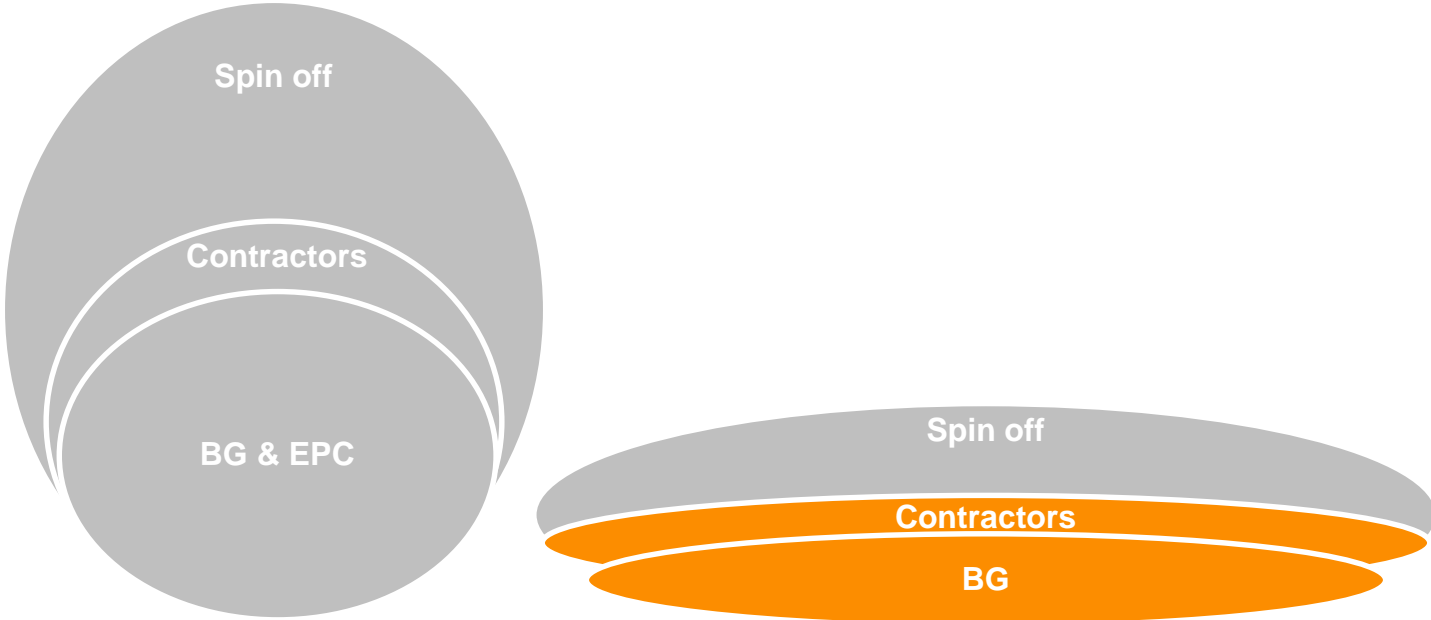
## Pathways to Success - Number of graduates that have secured employment (cumulative)



# Local jobs



# Local jobs - operations

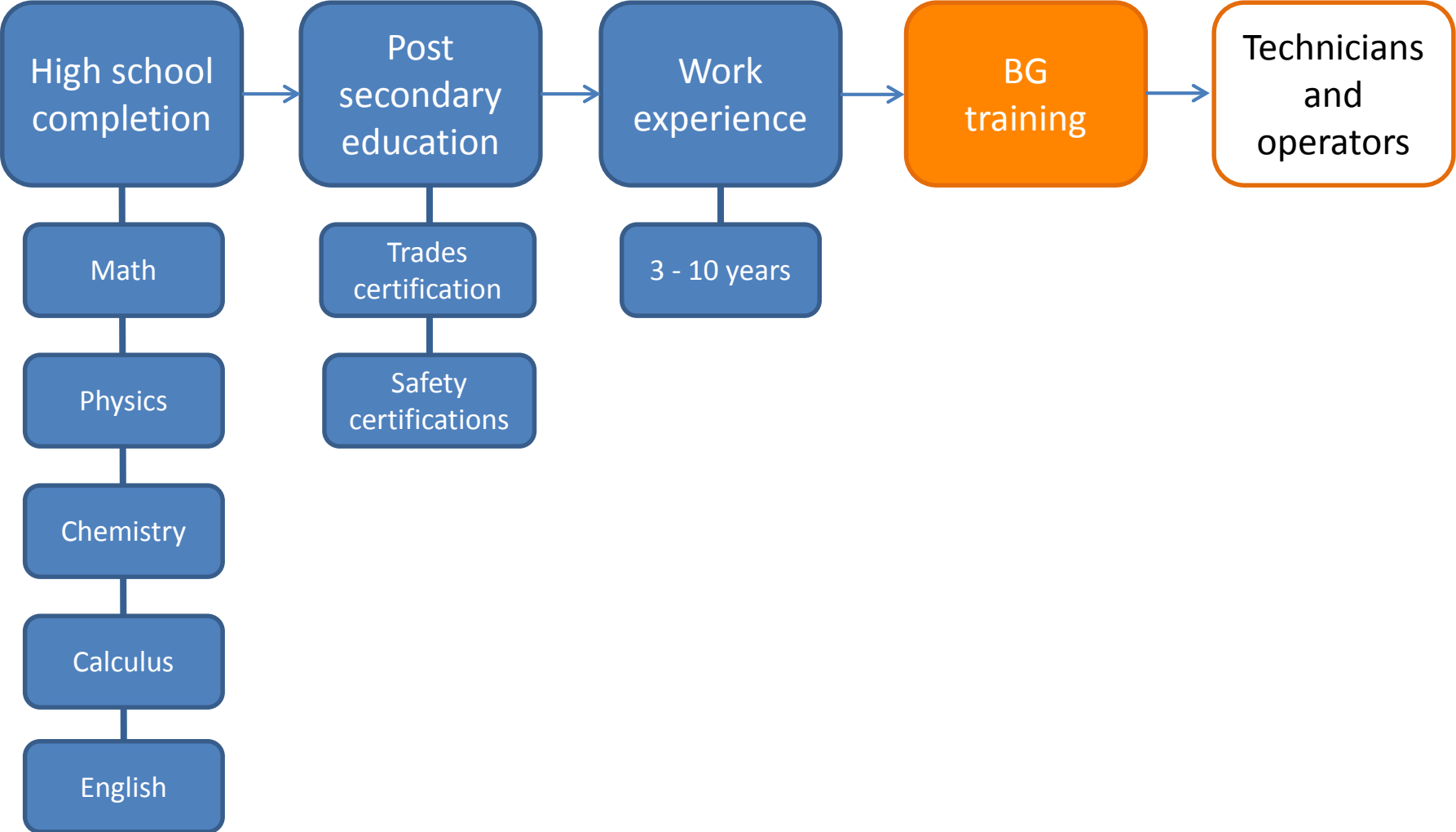


FID

Construction  
Peak direct  
workforce 3.5K

Operations  
Direct workforce 250 -300  
Direct contracts 150- 200

# Getting people ready for operations



# Numeracy training



***“Math is the gateway to everything that comes next.” – Ms. Carole Fullerton, numeracy consultant***

# Numeracy training



*“We’ve talked about flying. There’s lots and lots of math in flying.”*

# Science workshops, clubs, and camps



# Marine education

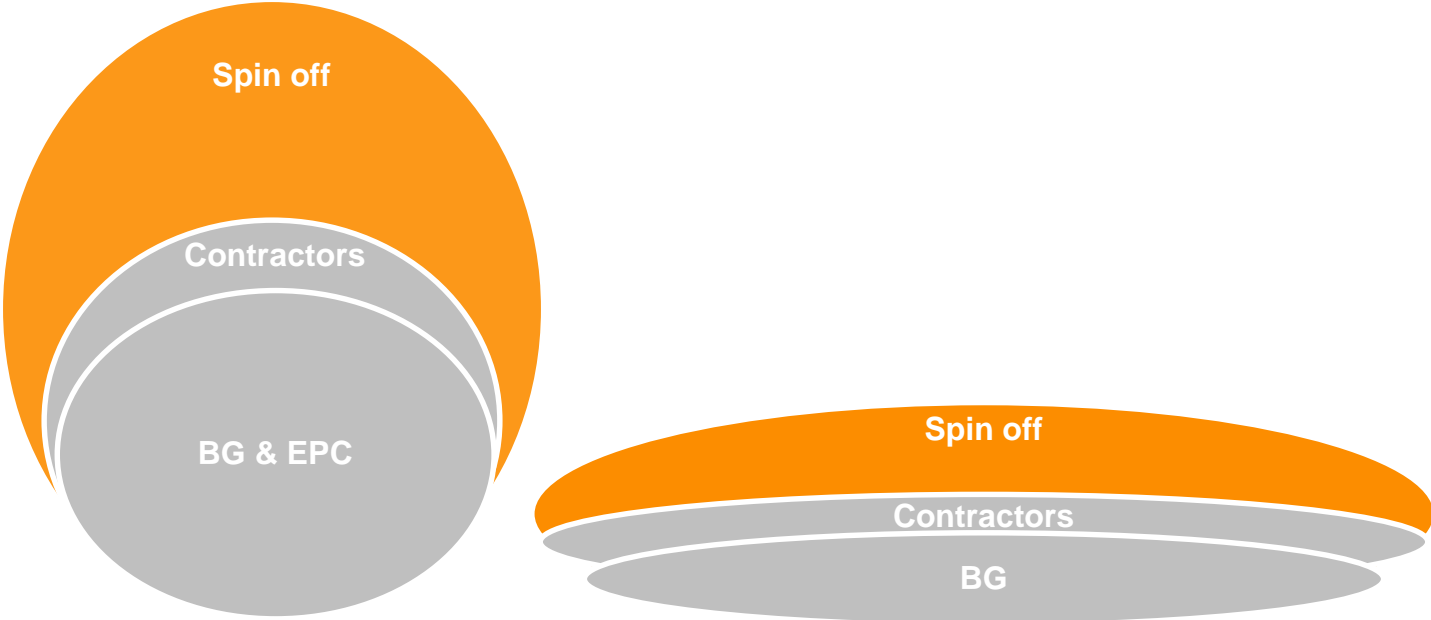
*“The AquaVan presenters made the Grade 10 and 11 Biology curriculum come to life. This is absolutely essential as our students will be the new stewards of our environment.”*



# Mentorship



# Spin off jobs



FID

Construction  
Peak direct  
workforce 3.5K

Operations  
Direct workforce 250 -300  
Direct contracts 150- 200

# Supporting small business



# Supporting small business



# Cultural Support



Metlakatla Youth Videography  
Training Program - May, 2015



*“Documenting all of our historical and cultural activities...is something that is going to build our library that will be used by all future generations”*

- Joycelynn Mitchell, Assistant Treaty Negotiator, Metlakatla.

# Cultural Support



# Cultural Support



# Come by our local office



We want to hear from you, visit our community relations team in Prince Rupert at 610 Second Avenue West.

**Local phone:**  
250 624 4914

**Toll-free community line:**  
855 683 6710

**[www.princerupertlng.ca](http://www.princerupertlng.ca)**



Rosa



Herb



Irene