

# Economic Development Implementation: **Panel of Municipal Managers & Administrators**



An aerial photograph of a coastal town, likely Hoonah, Alaska. The town is situated on a peninsula and is surrounded by dense, dark green forested hills. The water is a deep blue, and there are several docks and buildings visible along the shoreline. The sky is clear and blue.

**DENNIS GRAY**

**HOONAH**

of Hoonah

Seawalk Project

Pitt Island

# HOONAH SEAWALK

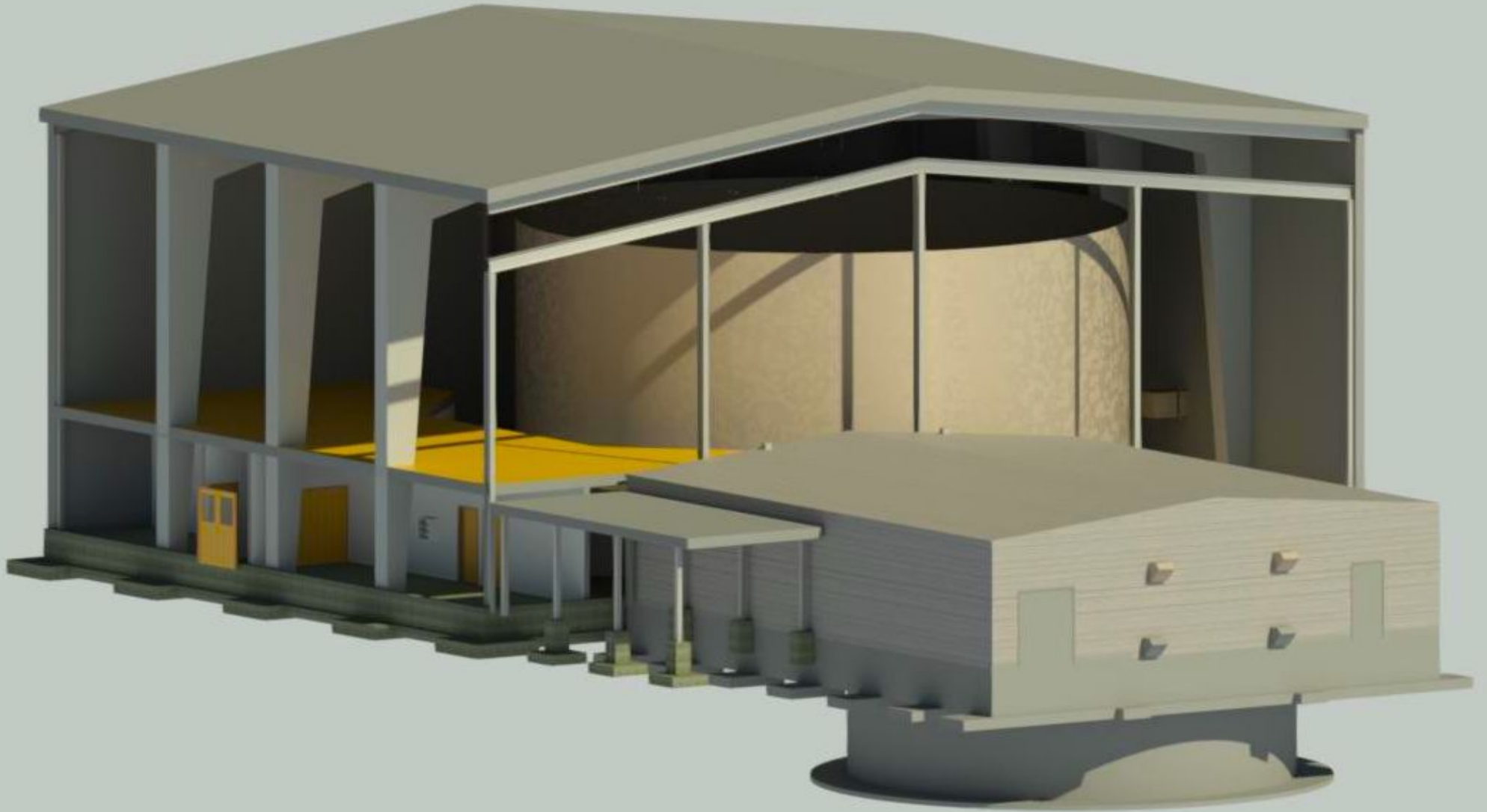
le Earth

CNES / Airbus

e



# NEW WASTEWATER



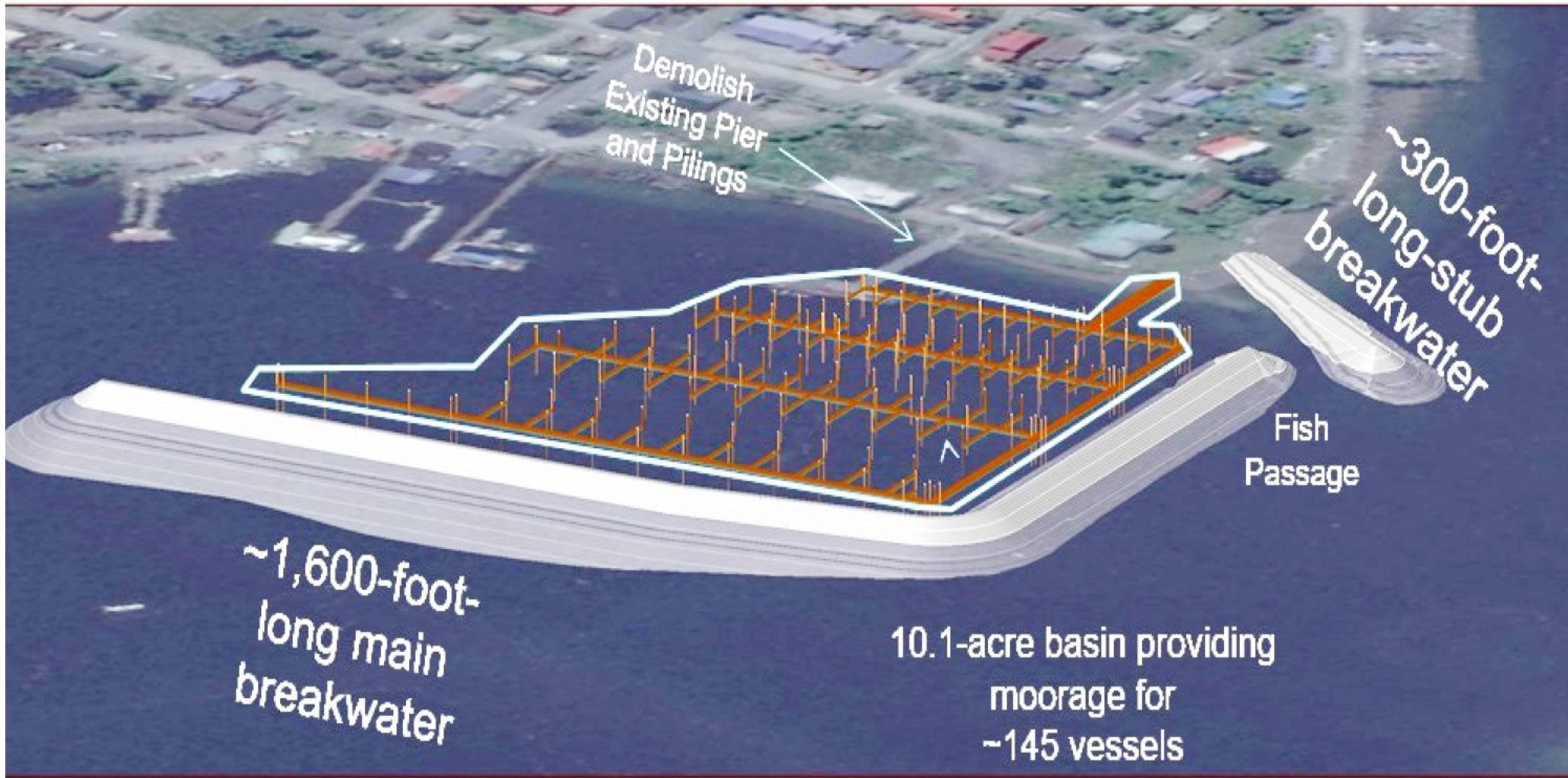
# TREATMENT PLANT

# JON BOLLING CRAIG





# CRAIG HARBOR



# CRAIG HARBOR 2

# ICE PLANT



# RORIE WATT JUNEAU







# SUPPORT LAND

**LISA VON BARGEN**

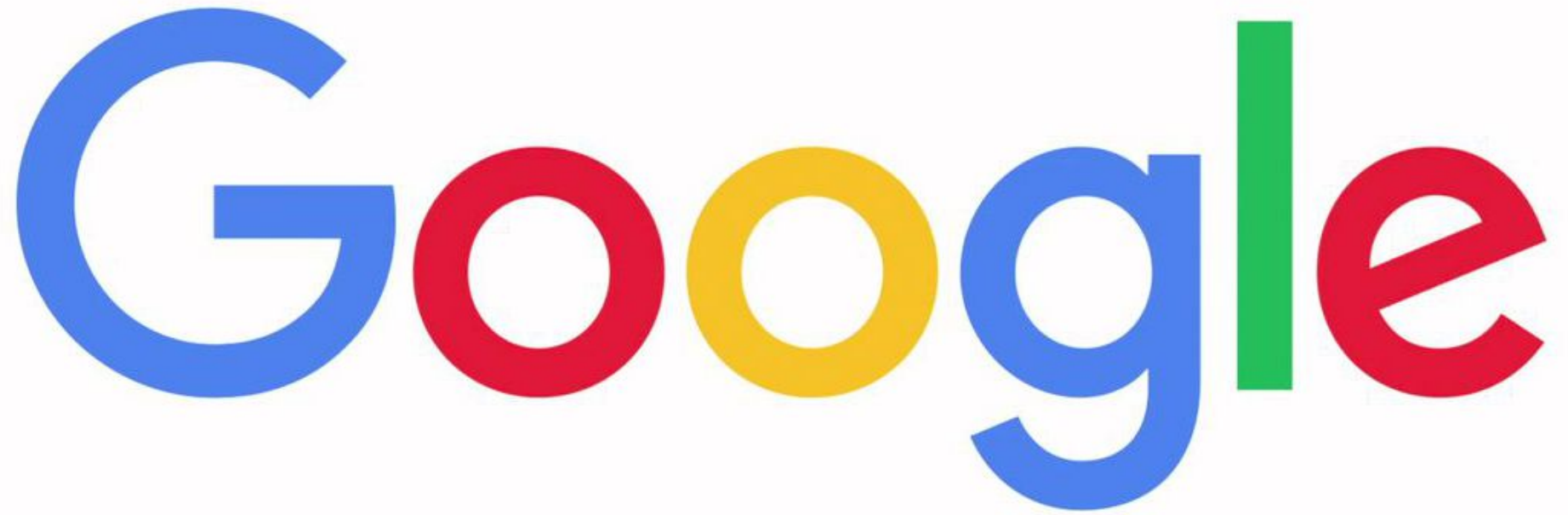
**WRANGELL**



# DIVESTITURE OF THE



# COMMUNITY HOSPITAL

The Google logo is displayed in its characteristic multi-colored font. The letters are: 'G' (blue), 'o' (red), 'o' (yellow), 'g' (blue), 'l' (green), and 'e' (red).

Google

**STRONGER WEB PRESENCE**

# CITY OF WRANGELL, ALASKA



# NEW FLOAT AT THE CITY DOCK

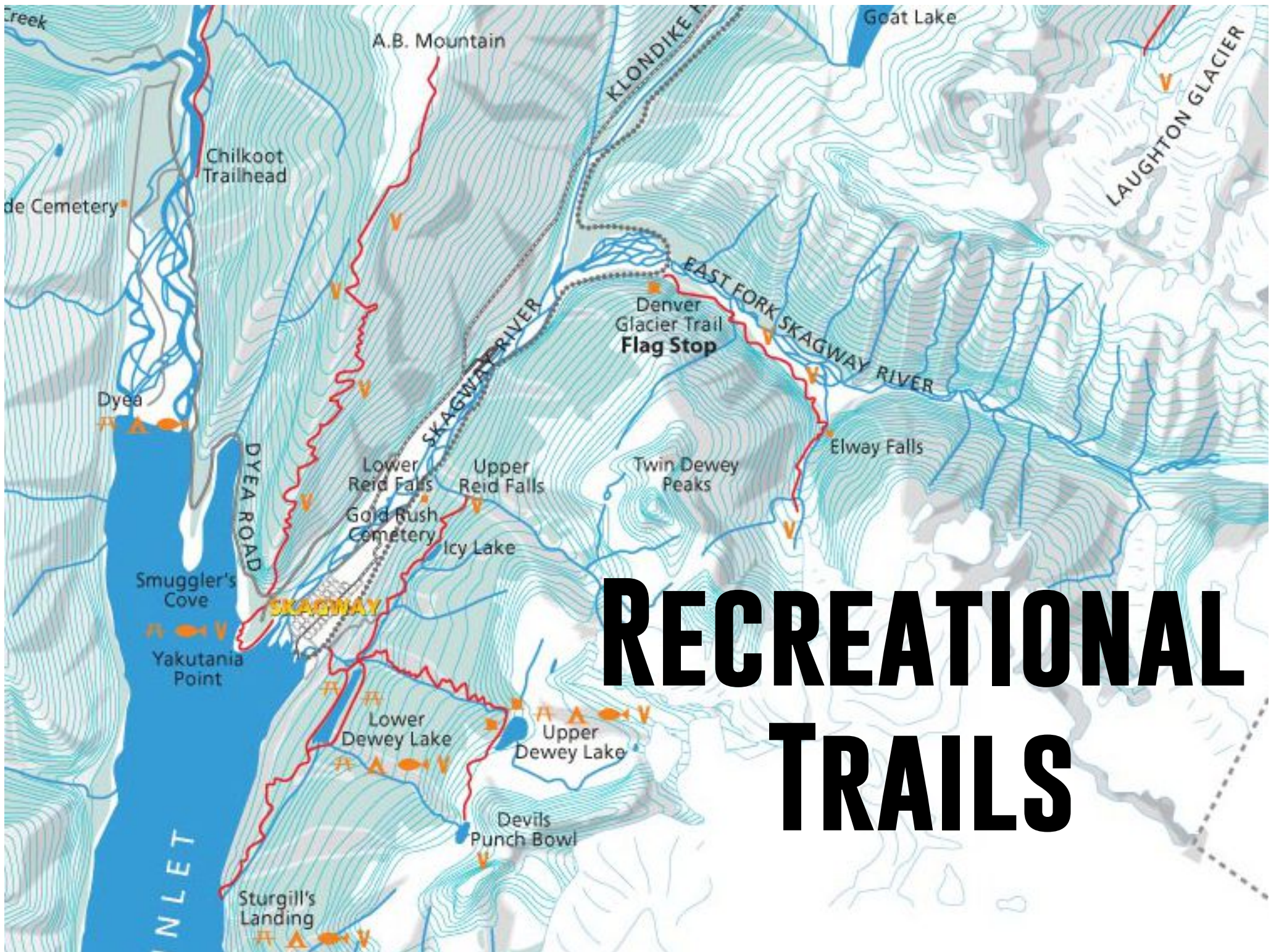
1 inch = 400 feet

DISCLAIMER: THESE MAPS ARE FOR PLANNING PURPOSES ONLY.  
PROPERTY LINES ARE APPROXIMATE.





# BRAD RYAN SKAGWAY



# RECREATIONAL TRAILS

An aerial photograph of Skagway, Alaska, showing the port area. Two cruise ships are docked at the pier. The town is visible in the upper right, and a large forested area is on the right. The water is dark green. The text 'SKAGWAY PORT' is overlaid in large white letters on the left side of the image.

# SKAGWAY PORT

A yellow excavator is positioned at the top of a deep, narrow trench. A large blue pipe is laid along the bottom of the trench. The trench walls are made of dark, moist earth. In the background, a brick building and a white house with windows are visible under an overcast sky.

**EXPANDED  
UTILITIES  
FOR HOUSING**



**JON ERICKSON**

**YAKUTAT**



# DENALI GRANT



**WAYNE BENNER**

**THORNE BAY**

**MATCHING FUNDS FROM  
THE PRIVATE SECTOR  
FOR CITY FACILITIES**

# LACEY SIMPSON KETCHIKAN



# MEDICAL CENTER LEASE





# PORT OF KETCHIKAN



# LESLIE ISAACS KLAWOCK



**Name a recent  
surprise,  
constraint, or  
road block, and  
how you reacted.**

**What are you  
most excited  
about for your  
community  
moving forward?**